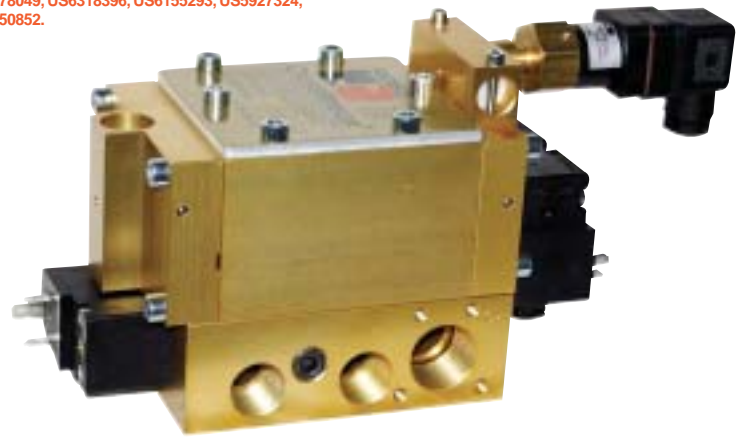
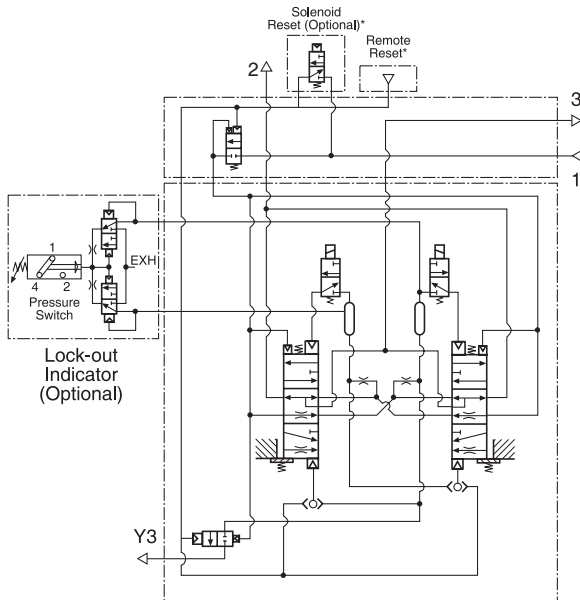


New Product Information

CROSSMIRROR® 3/2 Double Valve – Size 2 with Internal Dynamic Monitoring for Category 4 Safety Applications

May be covered by one or more of the following patents and their foreign equivalents:
US6478049, US6318396, US6155293, US5927324,
US5850852.



Shown with Reset Solenoid and Lock-out Indicator (pressure switch) Options – model 7773A3504

*Remote Reset models are reset via momentary remote pneumatic signal applied by a customer-supplied 3/2 normally closed valve. Models with the optional Solenoid Reset are reset by momentarily energizing the integrated reset solenoid supplied with the valve and base assembly. The reset solenoid is located on the base.

STANDARD SPECIFICATIONS

Pilot Solenoids: Two, rated for continuous duty.

Reset Solenoid: One (optional), rated for continuous duty.

Standard Voltages: 100 – 110 volts 50 Hz;
100 – 120 volts 60 Hz; 24, 110 volts d.c.
Other voltages available.

Power Consumption: Each Solenoid, 30 VA inrush,
16 VA holding on 50 or 60 Hz; 11 watts on d.c.

Electrical Connections: Uses cord-grip connectors at solenoids. Order connectors separately (see page 2).
NOTE: A drop-cord connector (without cord) is provided with the lock-out indicator pressure switch option.

Ambient Temperature: 40° to 120° F (4° to 50° C).

Media Temperature: 40° to 175° F (4° to 80° C).

Flow Media: 5 micron filtered air.

Inlet Pressure: 30 to 150 psig (2 to 10 bar).

Reset Pressure: Remote reset option requires reset pressure to be greater than or equal to inlet pressure.

ROSS' new size 2 CROSSMIRROR® 3/2 double valve is the state-of-the-art in valve technology related to safety. The patented CROSSMIRROR® dynamic monitoring system and dual valve design combine to handle the most stringent of safety-related applications for pneumatic equipment – Category 4 safety-related applications.

The internal dynamic monitor checks the valve on each cycle and includes an automatic lock-out function to inhibit further operation of the valve. The CROSSMIRROR® is available with remote reset or integrated solenoid reset. Both reset types are “tamper-proof” and the valve cannot be reset while the main valve solenoids are energized. Also, the reset function cannot be over-riden by removing and reapplying the valve's electrical or pneumatic energy sources. Removing the inlet air supply causes the valve to lock-out, and, therefore, the valve must be reset after the air supply is reappplied.

Further control is possible with the addition of an optional pressure switch for lock-out indication.

FEATURES:

- Integrated dynamic monitoring
- Automatic lock-out by monitor
- 3-way, 2-position design
- Tamper-proof reset on remote- & solenoid-reset models
- Pressure switch option for lock-out indication
- Designed to enable compliance with current safety regulations
- Base-mount for easy maintenance
- Rugged poppet technology
- Dual porting – connect piping to either side of base
- Covered by multiple global patents

APPLICATIONS:

- Control-reliable circuits
- Category 4 safety applications
- Press machinery
- Metal stamping facilities
- Amusement park rides
- Shearing equipment

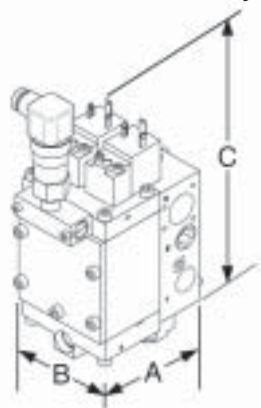


Valve Assembly Model Numbers

Model Numbers**	Base Numbers	Reset Option	Port Size		C _v		Pressure Switch	Average Response Constant			Weight lbs (kg)
			1, 2	3	1 - 2	2 - 3		M	In - Out	Out - Exh.	
7773A3501	1631C91	Customer Supplied	1/2	3/4	1.8	5.0	No	29	2.23	0.73	6.7 (3.0)
7773A3502	1630C91	Solenoid	1/2	3/4	1.8	5.0	No	29	2.23	0.73	7.0 (3.2)
7773A3503	1631C91	Customer Supplied	1/2	3/4	1.8	5.0	Yes	29	2.23	0.73	7.0 (3.2)
7773A3504	1630C91	Solenoid	1/2	3/4	1.8	5.0	Yes	29	2.23	0.73	7.4 (3.4)

**Valve assembly model number includes base. For G threads, order with a "D" prefix. For SAE threads, order with an "S" prefix. Prefixes also apply to base numbers. Replacement valve numbers: 7773A3402 (no pressure switch) and 7773A3401 (with pressure switch).

Valve & Base Assembly Dimensions inches (mm)



Model Numbers**	Dimensions inches (mm)		
	A	B	C
7773A3501	3.5 (89)	4.3 (110)	7.8 (198)
7773A3502	3.5 (89)	4.3 (110)	9.0 (229)
7773A3503	3.5 (89)	5.2 (133)	9.6 (244)
7773A3504	3.5 (89)	5.2 (133)	10.8 (275)

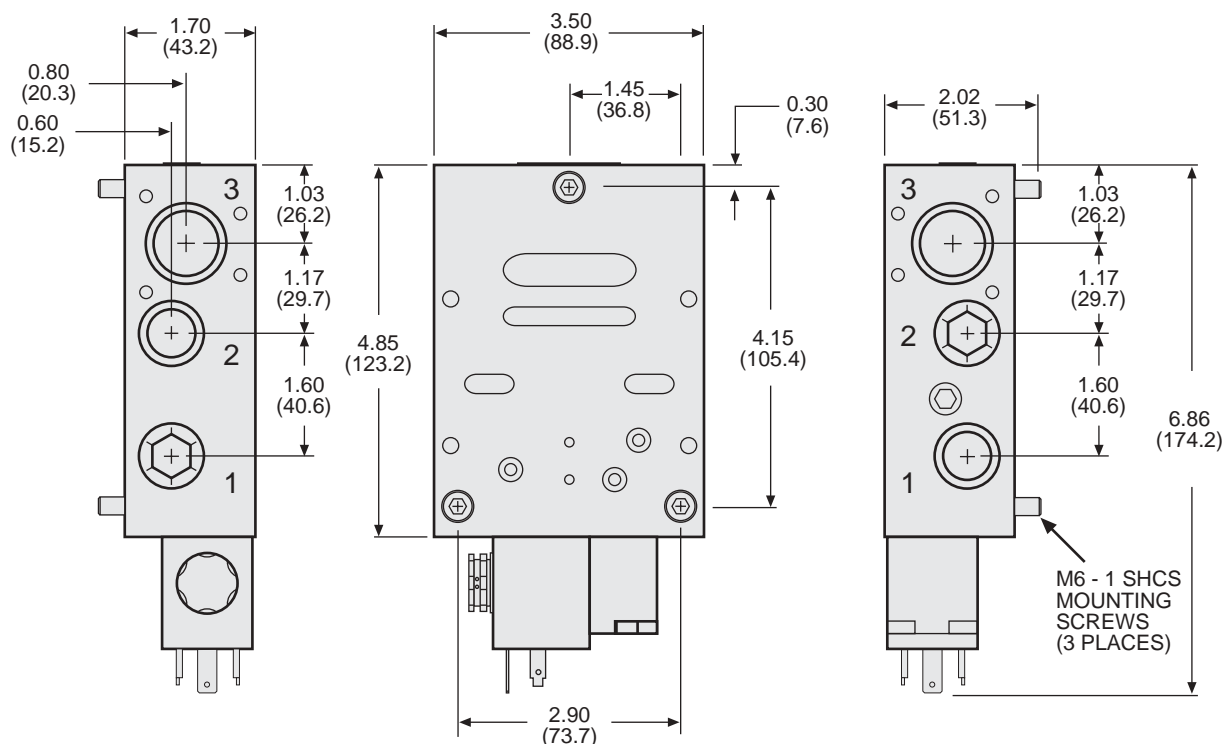


ELECTRICAL CONNECTORS

Connector Type	Without Light	With Light***
For use with drop cord (Cord not included)	937K87	936K87
Wired with 6-mm cord	721K77	720K77
Wired with 10-mm cord	371K77	383K77
For use with threaded conduit	723K77	724K77

*** Specify solenoid voltage.

Base Dimensions inches (mm)



WARRANTY and CAUTIONS

Standard ROSS warranty and cautions apply, available upon request or at www.rosscontrols.com/pdfs/cautionswarranty.pdf.



ROSS CONTROLS®
U.S.A.
TEL 800-GET-ROSS
custsvc@rosscontrols.com

ROSS EUROPA GmbH
Germany
FAX 49-6103-74694
info@rosseuropa.com

ROSS ASIA K.K.
Japan/China
FAX 81-427-78-7256
custsvc@rossasia.co.jp

ROSS UK Ltd.
United Kingdom
FAX 44-121-559-5309
sales@rossuk.co.uk

ROSS SOUTH AMERICA Ltda.
Brazil
TEL 55-11-4335-2200
vendas@ross-sulamerica.com.br

ROSS CONTROLS INDIA Pvt. Ltd.
India
FAX 91-44-2625-8730
sales@rosscontrolsindia.com