

**Series
11 & 12
Cam and Manual Valves
31 & 36 Manual Valves
Pendant Control Valves**

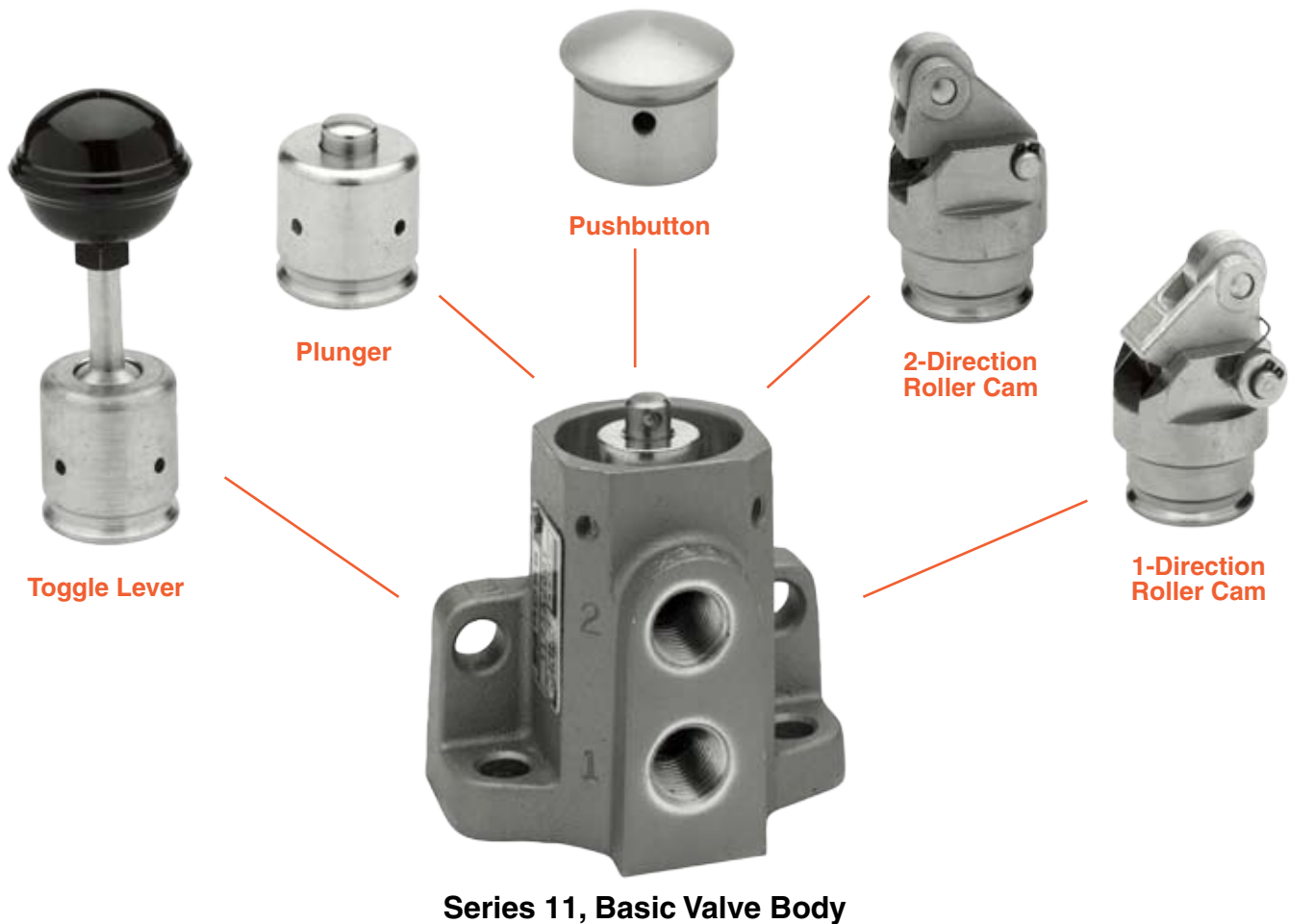


• *Manufacturers of Premium Pneumatic Controls since 1921* •

Contents

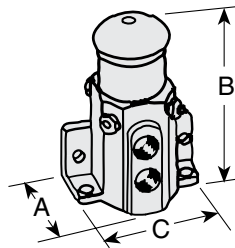
Series 11 Operator Choices General Information	2
Series 11 Manual Valves	
2/2 and 3/2 Pushbutton and Toggle Lever Valves	3
2/2 and 3/2 Roller and Plunger Cam Valves	4
Series 12 Manual Valves	
2/2 and 3/2 Pushbutton Valves	5
3/2 Telegraph Lever Valves	6
Series 31 Manual Valves	
4/3 Lever Valves.....	7
Series 36 Manual Valves	
3/2 and 4/2 Lever Valves.....	8
3/2 and 4/2 Pedal and Treadle Valves	9
Pendant Control Valves	10
CAUTIONS, WARRANTY	11
Global Locations	12

If you need products or specifications not shown within this bulletin, please contact ROSS for more information or visit ROSS website at www.rosscontrols.com.

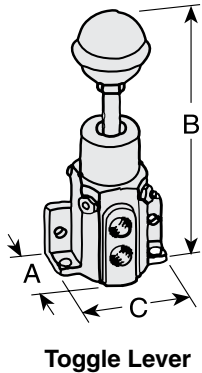


Series 11 Manual Valves

2/2 and 3/2 Pushbutton and Toggle Lever Valves, Spring Return



Pushbutton



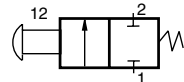
Toggle Lever

Pushbutton and lever operators

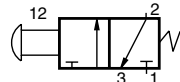
- Available in 2-way or 3-way constructions
- Reliable poppet valve construction
- Side and bottom mounting flanges
- Rugged cast aluminum valve body

Port Size	Valve Type	Valve Model Number	Avg. C _v	Dimensions inches (mm)			Weight lb (kg)
				A	B	C	
1/4	2/2 - Pushbutton	1121A2001	0.5	1.8 (46)	3.3 (83)	2.8 (70)	1.0 (0.5)
1/4	3/2 - Pushbutton	1123A2001	0.5	1.8 (46)	3.3 (83)	2.8 (70)	1.0 (0.5)
1/4	2/2 - Toggle	1121A2002	0.5	1.8 (46)	5.9 (150)	2.8 (70)	1.0 (0.5)
1/4	3/2 - Toggle	1123A2002	0.5	1.8 (46)	5.9 (150)	2.8 (70)	1.0 (0.5)

Pushbutton

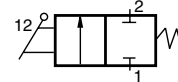


2/2 Normally Closed

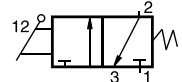


3/2 Normally Closed

Toggle Lever



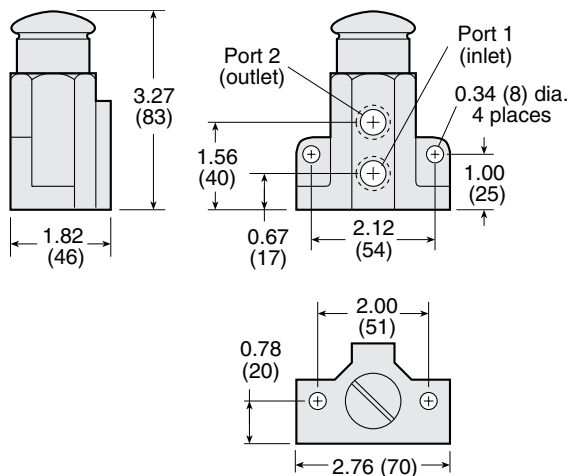
2/2 Normally Closed



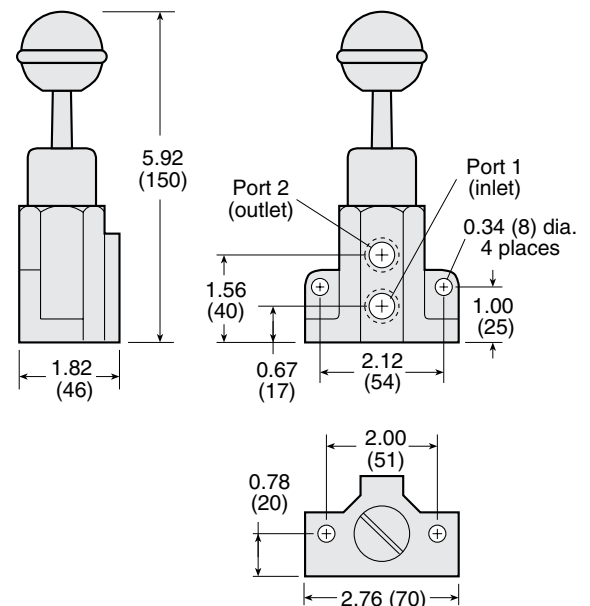
3/2 Normally Closed

Detailed Dimensions – inches (mm)

Pushbutton



Toggle Lever



STANDARD SPECIFICATIONS: For valves on this page.
Ambient/Media Temperature: 40° to 175°F (4° to 80°C).
Flow Media: Filtered air; 5 micron recommended.

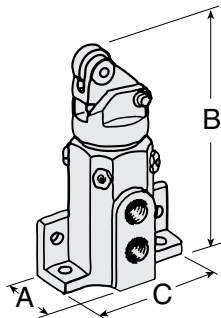
Inlet Pressure: 5 to 150 psig (0.3 to 10 bar) except Type RD;
 5 to 125 psig (0.3 to 8.6 bar) on Type RD.

IMPORTANT NOTE: Please read carefully and thoroughly all of the **CAUTIONS** on the inside back cover.



Series 11 Manual Valves

2/2 and 3/2 Roller and Plunger Cam Valves, Spring Return

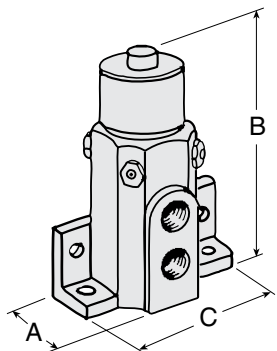


Roller

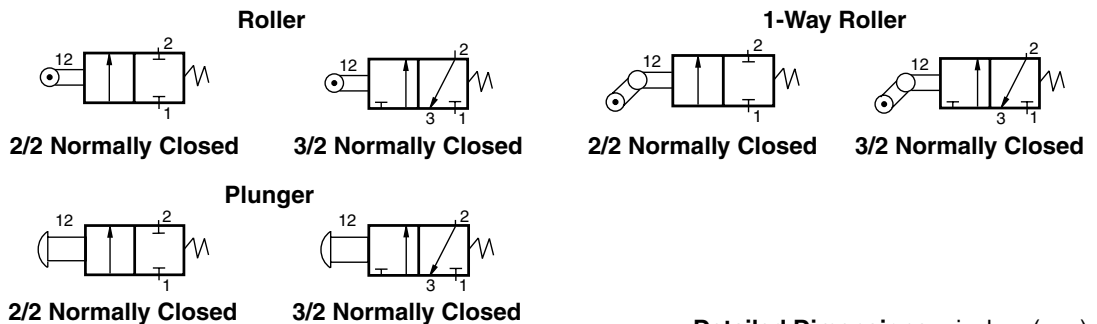
Pushbutton and lever operators

- Available in 2-way or 3-way constructions
- Reliable poppet valve construction
- Side and bottom mounting flanges
- Rugged cast aluminum valve body

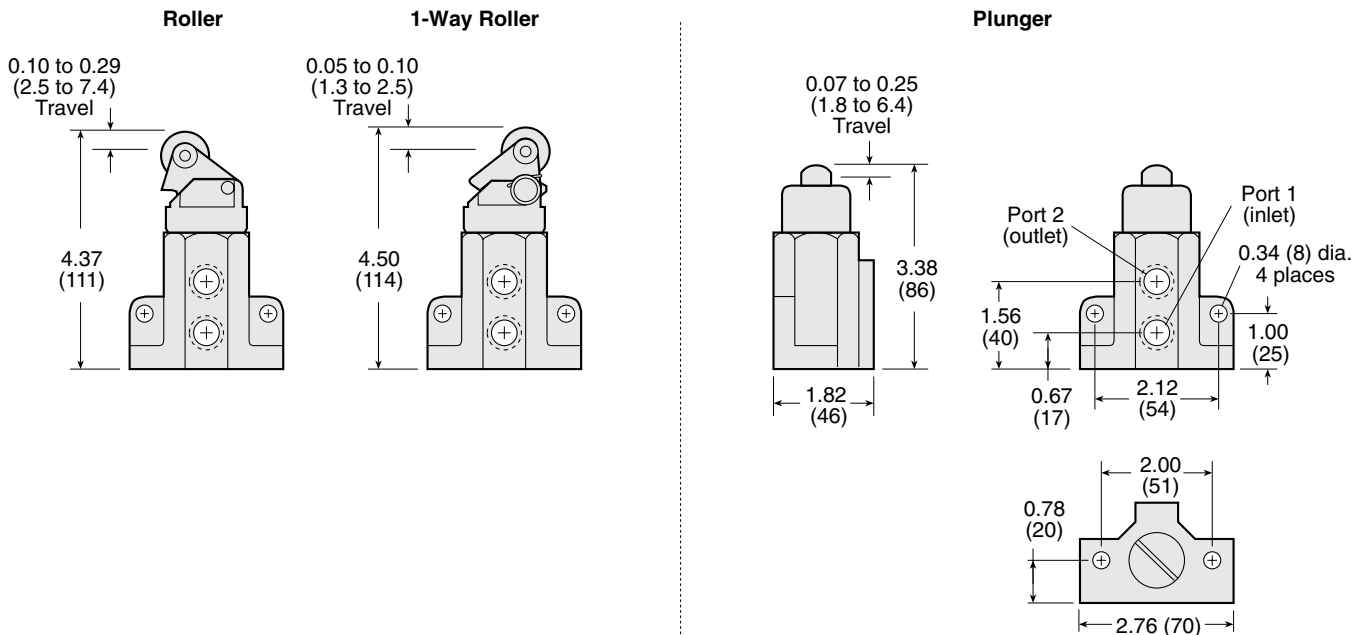
Port Size	Valve Type	Valve Model Number	Avg. C _v	Dimensions inches (mm)			Weight lb (kg)
				A	B	C	
1/4	2/2 - Roller	1131A2001	0.5	1.8 (46)	4.4 (111)	2.8 (70)	1.0 (0.5)
1/4	3/2 - Roller	1133A2001	0.5	1.8 (46)	4.4 (111)	2.8 (70)	1.0 (0.5)
1/4	2/2 - 1-Way Roller	1131A2002	0.5	1.8 (46)	4.5 (114)	2.8 (70)	1.0 (0.5)
1/4	3/2 - 1-Way Roller	1133A2002	0.5	1.8 (46)	4.5 (114)	2.8 (70)	1.0 (0.5)
1/4	2/2 - Plunger	1131A2003	0.5	1.8 (46)	3.4 (86)	2.8 (70)	1.0 (0.5)
1/4	3/2 - Plunger	1133A2003	0.5	1.8 (46)	3.4 (86)	2.8 (70)	1.0 (0.5)



Plunger



Detailed Dimensions – inches (mm)



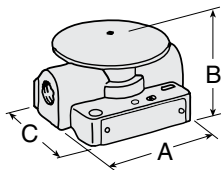
STANDARD SPECIFICATIONS: For valves on this page.
Ambient/Media Temperature: 40° to 175°F (4° to 80°C).
Flow Media: Filtered air; 5 micron recommended.

Inlet Pressure: 5 to 150 psig (0.3 to 10 bar) except Type RD;
 5 to 125 psig (0.3 to 8.6 bar) on Type RD.

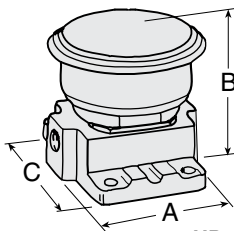
IMPORTANT NOTE: Please read carefully and thoroughly all of the **CAUTIONS** on the inside back cover.

Series 12 Manual Valves

2/2 and 3/2 Pushbutton Valves, Spring Return



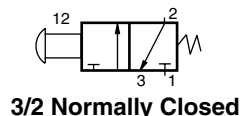
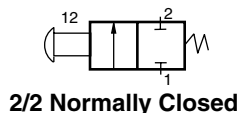
RD- Regular Duty



HD- Heavy Duty

Pushbutton operator

- Available in 2-way or 3-way constructions
- Button actuators available in red or green
- "HD" model buttons are high-strength plastic
- "RD" model buttons are metal
- Ring guards available for both button styles

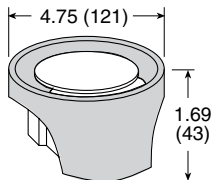


Port Size	Valve Type	Valve Model Number		Avg. C_v	Dimensions inches (mm)			Weight lb (kg)
		Green Button	Red Button		A	B	C	
1/8	3/2 - RD	1223A1005	1223A1006	0.6	2.8 (70)	1.6 (41)	2.3 (58)	1.0 (0.5)
1/4	3/2 - RD	1223A2005	1223A2006	0.6	2.8 (70)	1.6 (41)	2.3 (58)	1.0 (0.5)
1/4	2/2 - HD	1221B2001	1221B2003	0.8	2.7 (69)	2.3 (58)	3.0 (77)	1.8 (0.8)
1/4	3/2 - HD	1223B2001	1223B2003	0.8	2.7 (69)	2.3 (58)	3.0 (77)	1.8 (0.8)

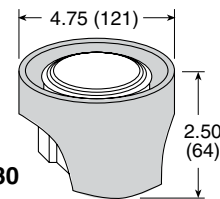
Ring-type Guard: Helps to protect against accidental valve actuation.

Order by following part numbers: **For RD valves: 279B30**

For HD valves: 278B30



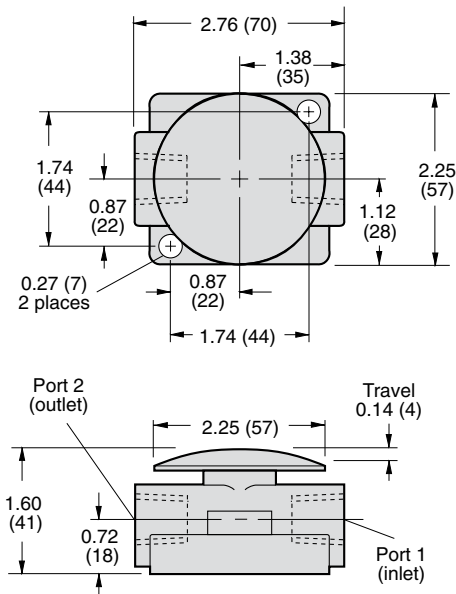
RD valves: 279B30



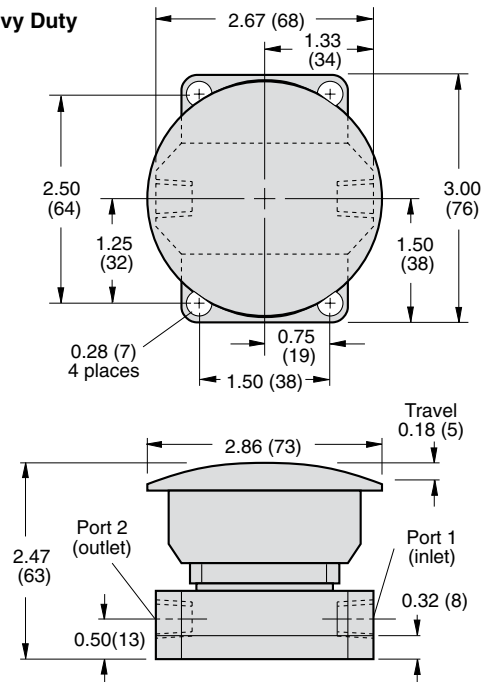
HD valves: 278B30

Detailed Dimensions – inches (mm)

RD- Regular Duty



HD- Heavy Duty



STANDARD SPECIFICATIONS: For valves on this page.
Ambient/Media Temperature: 40° to 175°F (4° to 80°C).
Flow Media: Filtered air; 5 micron recommended.

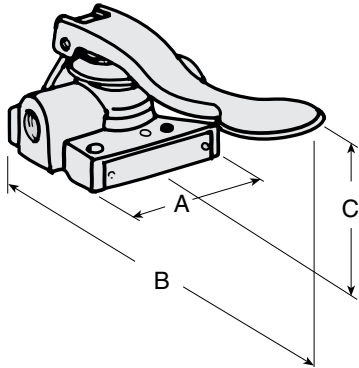
Inlet Pressure: 5 to 150 psig (0.3 to 10 bar) except Type RD;
 5 to 125 psig (0.3 to 8.6 bar) on Type RD.

IMPORTANT NOTE: Please read carefully and thoroughly all of the **CAUTIONS** on the inside back cover.



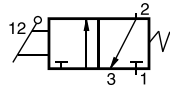
Series 12 Manual Valves

3/2 Telegraph Lever Valves, Spring Return



Lever operator

- Low-force “telegraph key” operator available on a 3-way, normally-closed valve body
- Self cleaning poppet design tolerates dirty air
- Poppets are Self-Compensating for Wear; Promote Long Life



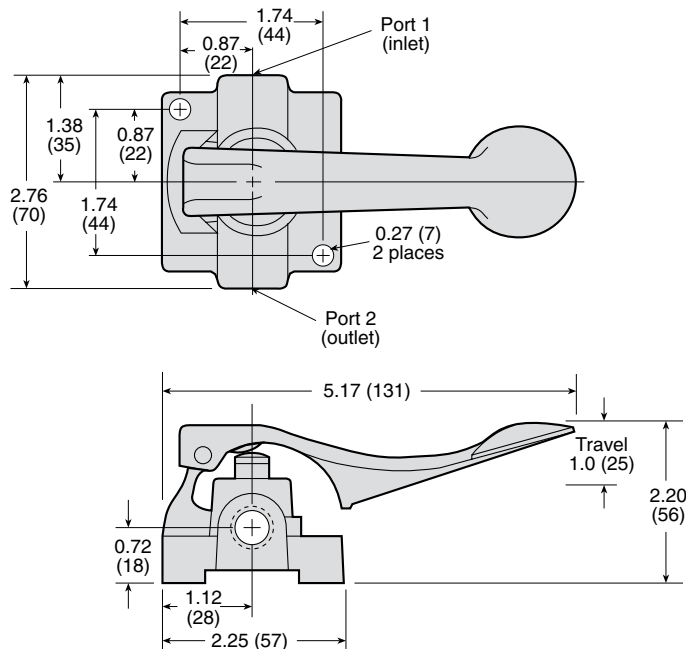
3/2 Normally Closed

Port Size	Average C _v	Type	Valve Model Number		Dimensions inches (mm)		
			Left Hand*	Right Hand**	A	B	C
1/8	0.6	3/2	1223A1007	1223A1008	2.8 (70)	5.2 (131)	2.2 (56)
1/4	0.6	3/2	1223A2007	1223A2008	2.8 (70)	5.2 (131)	2.2 (56)

*Left hand models have inlet port on left side of operating lever;

**Right hand models have inlet port on right side of lever.

Detailed Dimensions – inches (mm)



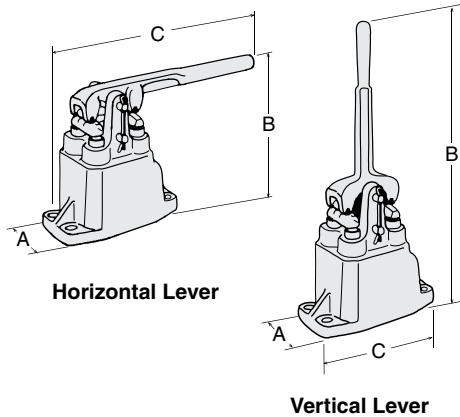
STANDARD SPECIFICATIONS: For valves on this page.
Ambient/Media Temperature: 40° to 175°F (4° to 80°C).

Flow Media: Filtered air; 5 micron recommended.
Inlet Pressure: 5 to 150 psig (0.3 to 10 bar).

IMPORTANT NOTE: Please read carefully and thoroughly all of the **CAUTIONS** on the inside back cover.

Series 31 Manual Valves

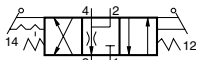
4/3 Lever Valves, Detented



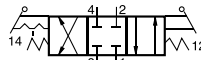
Horizontal Lever

Vertical Lever

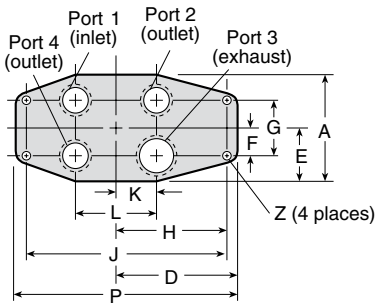
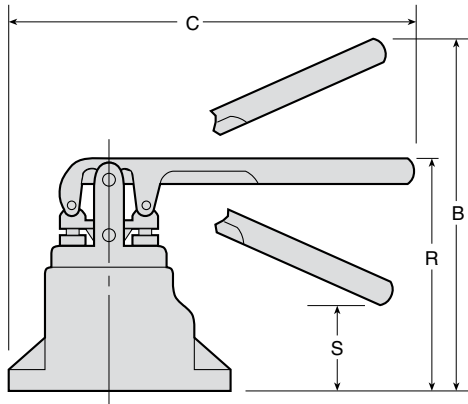
3 Positions,
All Ports on Bottom Face



Open Center



Closed Center



Heavy-duty hand lever operators

- Reliable ROSS poppet valve construction
- Choice of horizontal or vertical lever position
- Heavy cast aluminum valve body
- 4-way, 3 position, detented or non-detented lever action
- Center lever-position allows bleed to exhaust, or all ports blocked
- All ports on bottom of valve

Port Size	Valve Model Number	Avg. C_v	Closed/Open Center	Dimensions inches (mm)			Weight lb (kg)
				A	B	C	
3/8	3126A3007	1.6	Open	2.1 (54)	4.4 (112)	8.1 (205)	2.0 (0.9)
3/8	3126A3010	1.6	Closed	2.1 (54)	4.4 (112)	8.1 (205)	2.0 (0.9)
1/2	3126A4007	2.6	Open	2.8 (70)	5.5 (140)	11.2 (284)	3.8 (1.7)
1/2	3126A4010	2.6	Closed	2.8 (70)	5.5 (140)	11.2 (284)	3.8 (1.7)
3/4	3126A5007	4.6	Open	3.3 (83)	6.2 (156)	12.5 (317)	5.0 (2.3)
3/4	3126A5010	4.6	Closed	3.3 (83)	6.2 (156)	12.5 (317)	5.0 (2.3)
1	3126A6007	8.8	Open	4.1 (105)	8.0 (202)	18.6 (473)	10.0 (4.5)
1	3126A6010	8.8	Closed	4.1 (105)	8.0 (202)	18.6 (473)	10.0 (4.5)
1 1/4	3126A7007	12	Open	4.8 (121)	8.2 (207)	18.8 (476)	11.0 (5.0)
1 1/4	3126A7010	12	Closed	4.8 (121)	8.2 (207)	18.8 (476)	11.0 (5.0)
3/8*	3126A3009	1.6	Open	2.1 (54)	10.8 (273)	4.3 (109)	2.4 (1.1)
3/8*	3126A3012**	1.6	Open	2.1 (54)	10.8 (273)	4.3 (109)	2.4 (1.1)
3/8*	3126A3013	1.6	Closed	2.1 (54)	10.8 (273)	4.3 (109)	2.4 (1.1)
3/8*	3126A3014**	1.6	Closed	2.1 (54)	10.8 (273)	4.3 (109)	2.4 (1.1)
1/2*	3126A4009	2.6	Open	2.8 (70)	13.5 (344)	5.6 (143)	4.8 (2.2)
1/2*	3126A4012**	2.6	Open	2.8 (70)	13.5 (344)	5.6 (143)	4.8 (2.2)
1/2*	3126A4013	2.6	Closed	2.8 (70)	13.5 (344)	5.6 (143)	4.8 (2.2)
1/2*	3126A4014**	2.6	Closed	2.8 (70)	13.5 (344)	5.6 (143)	4.8 (2.2)

* Vertical lever; ** Non-detented models.

Detailed Dimensions – inches (mm)

Ports 1, 2, 4 Port 3	3/8 1/2	1/2 3/4	3/4 1	1 1-1/4	1 1/4 1 1/2
A	2.12 (54)	2.75 (70)	3.25 (83)	4.13 (105)	4.75 (121)
B	6.77 (172)	9.00 (229)	10.00 (254)	13.50 (343)	14.10 (358)
C	8.05 (204)	11.17 (284)	12.48 (317)	18.63 (473)	18.75 (476)
D	2.38 (61)	3.06 (78)	3.50 (89)	4.31 (110)	4.50 (114)
E	1.06 (27)	1.38 (35)	1.62 (41)	2.06 (53)	2.38 (60)
F	0.50 (13)	0.69 (17)	0.75 (19)	1.00 (25)	1.13 (29)
G	1.00 (25)	1.37 (35)	1.50 (38)	2.00 (51)	2.25 (57)
H	2.06 (52)	2.63 (57)	3.00 (76)	3.75 (95)	3.94 (100)
J	3.69 (94)	4.75 (121)	5.37 (136)	6.81 (173)	7.13 (181)
K	0.75 (19)	1.00 (25)	1.13 (29)	1.50 (38)	1.50 (38)
L	1.50 (38)	2.00 (51)	2.25 (57)	3.00 (76)	3.00 (76)
P	4.31 (110)	5.63 (143)	6.38 (162)	7.94 (202)	8.25 (210)
R	4.40 (112)	5.53 (140)	6.15 (157)	7.94 (202)	8.16 (208)
S	1.50 (38)	1.40 (36)	1.60 (41)	1.00 (25)	1.20 (30)
Z	0.34 (8)	0.44 (11)	0.47 (12)	0.56 (14)	0.56 (14)

STANDARD SPECIFICATIONS: For valves on this page.
Ambient/Media Temperature: 40° to 175°F (4° to 80°C).

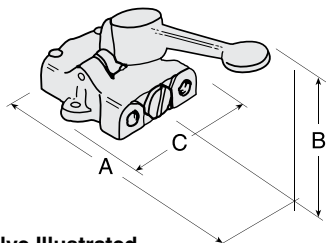
Flow Media: Filtered air; 5 micron recommended.
Inlet Pressure: 5 to 150 psig (0.3 to 10 bar).

IMPORTANT NOTE: Please read carefully and thoroughly all of the **CAUTIONS** on the inside back cover.



Series 36 Manual Valves

3/2 and 4/2 Lever Valves, Detented or Spring Return



3/2 Valve Illustrated

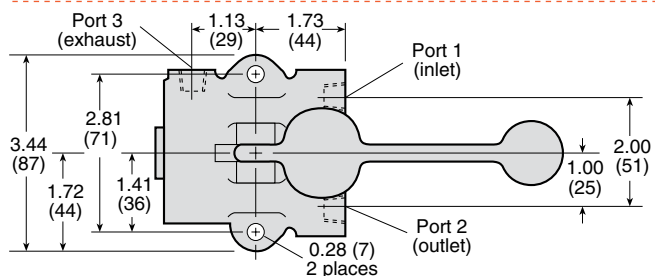
Lever operators

- Reliable ROSS poppet design
- 3-way or 4-way normally-closed
- Detented or non-detented operators
- Ruggedly-built for extended life

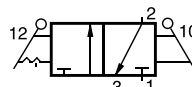
Port Size	Valve Type	Valve Model Numbers*	Avg. C _v	Dimensions inches (mm)			Weight lb (kg)
				A	B	C	
1/4	3/2 - Detented	3623A2003	1.2	7.2 (182)	3.2 (81)	3.4 (87)	1.3 (0.6)
1/4	3/2 - Spring return	3623A2004	1.2	7.2 (182)	3.2 (81)	3.4 (87)	1.3 (0.6)
1/4	4/2 - Detented	3626A2003	1.2	7.9 (200)	3.8 (97)	3.7 (93)	2.5 (1.1)
1/4	4/2 - Spring return	3626A2004	1.2	7.9 (200)	3.8 (97)	3.7 (93)	2.5 (1.1)

*For models with vertical handle, consult ROSS.

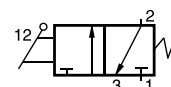
Detailed Dimensions – inches (mm)



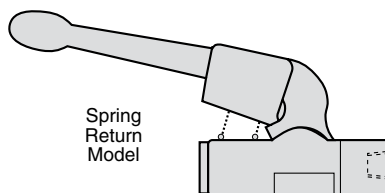
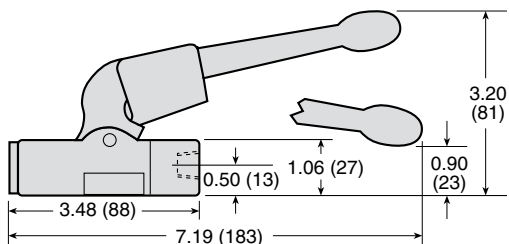
3/2 Models



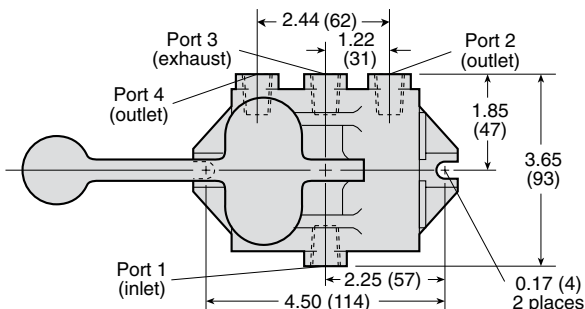
3/2 Detented



3/2 Spring Return



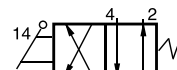
Spring Return Model



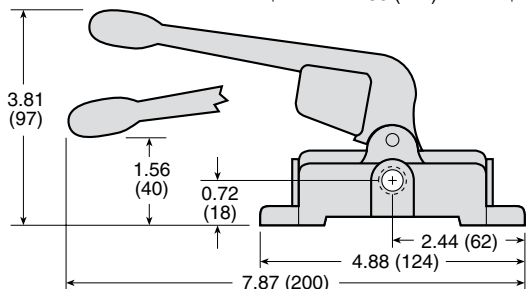
4/2 Models



4/2 Detented



4/2 Spring Return



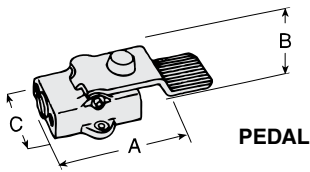
STANDARD SPECIFICATIONS: For valves on this page.
Ambient/Media Temperature: 40° to 175°F (4° to 80°C).

Flow Media: Filtered air; 5 micron recommended.
Inlet Pressure: 5 to 125 psig (0.3 to 8.5 bar).

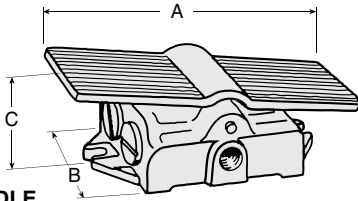
IMPORTANT NOTE: Please read carefully and thoroughly all of the **CAUTIONS** on the inside back cover.

Series 36 Manual Valves

3/2 and 4/2 Pedal and Treadle Valves



PEDAL

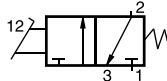


TREADLE

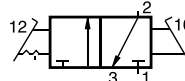
Pedal, and treadle operators

- Reliable ROSS poppet design
- Detented or non-detented operators
- 3-way or 4-way normally-closed
- Ruggedly-built for extended life

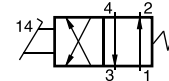
Port Size	Valve Type	Valve Model Numbers*	Avg. C _v	Dimensions inches (mm)			Weight lb (kg)
				A	B	C	
1/4	3/2 - Pedal	3643A2002	1.2	6.4 (161)	2.6 (65)	3.5 (87)	1.3 (0.6)
1/4	3/2 - Treadle	3643A2001	1.2	6.0 (152)	3.5 (87)	1.9 (48)	1.3 (0.6)
1/4	4/2 - Pedal	3646A2002	1.2	7.2 (183)	2.9 (73)	3.7 (93)	2.8 (1.3)
1/4	4/2 - Treadle	3646A2001	1.2	6.5 (165)	3.7(93)	2.5 (64)	2.8 (1.3)



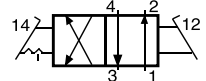
3/2 Pedal, Spring return



3/2 Treadle, Detented



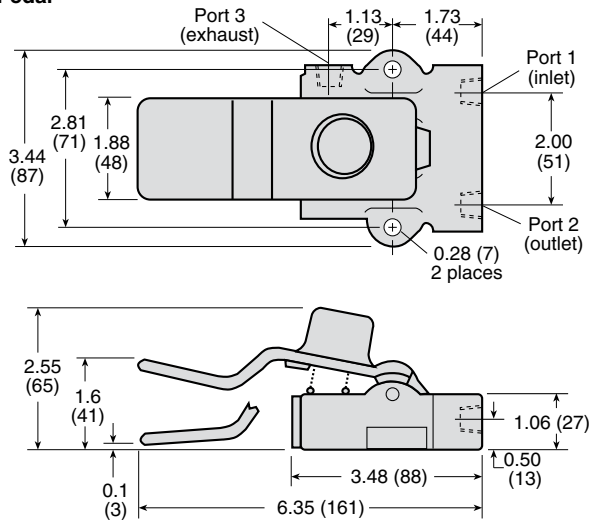
4/2 Pedal, Spring Return



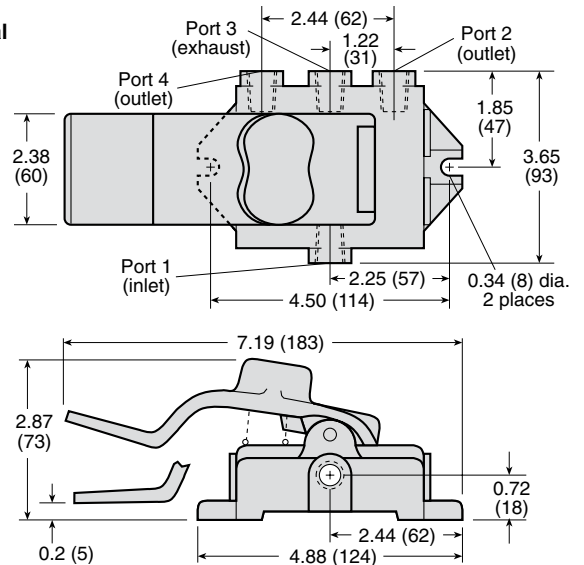
4/2 Treadle, Detented

Detailed Dimensions – inches (mm)

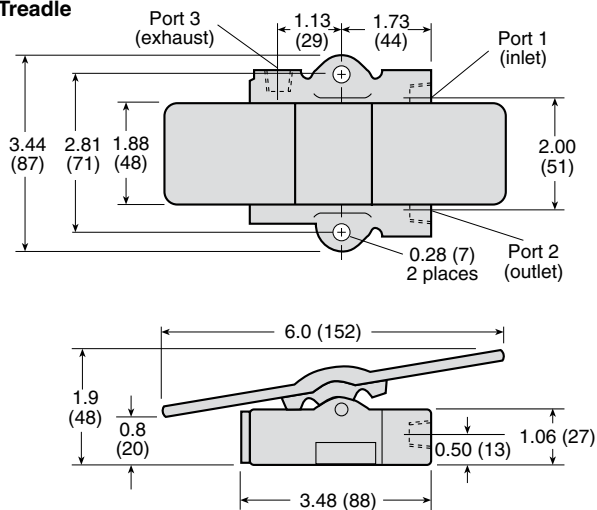
3/2 Pedal



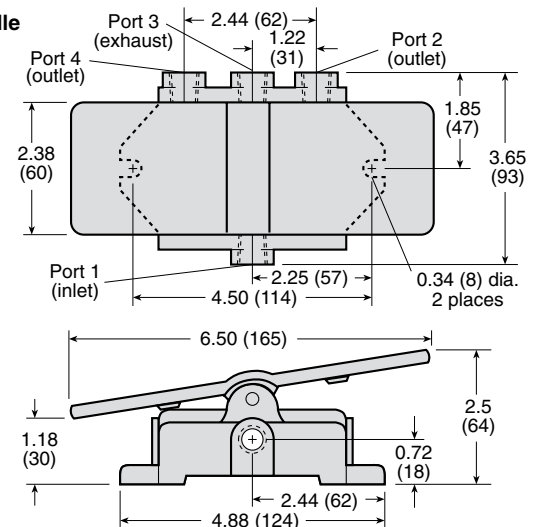
4/2 Pedal



3/2 Treadle



4/2 Treadle



STANDARD SPECIFICATIONS: For valves on this page.
Ambient/Media Temperature: 40° to 175°F (4° to 80°C).

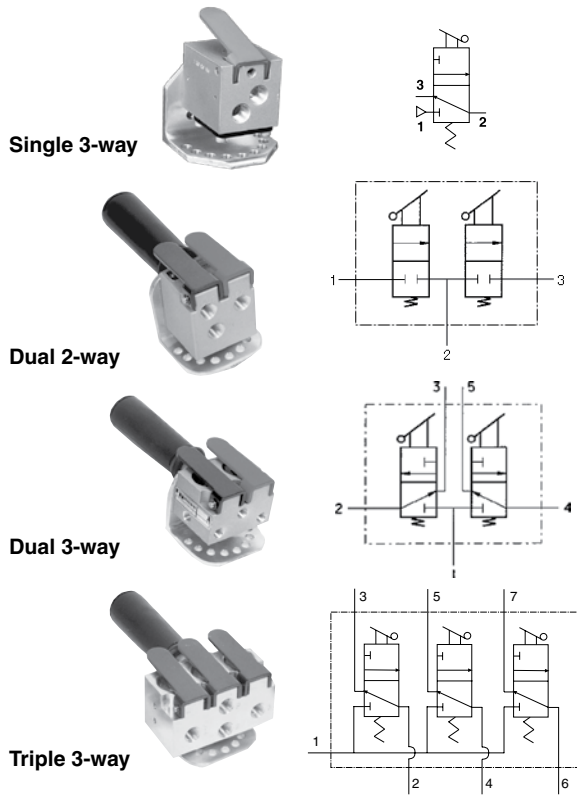
Flow Media: Filtered air; 5 micron recommended.
Inlet Pressure: 5 to 125 psig (0.3 to 8.5 bar).

IMPORTANT NOTE: Please read carefully and thoroughly all of the **CAUTIONS** on the inside back cover.



Pendant Control Valves

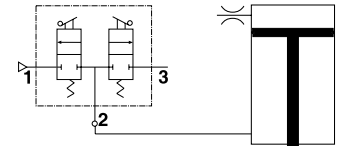
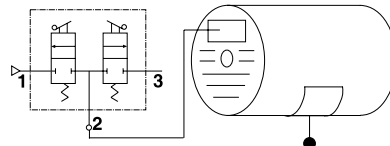
Pendant Control Valves, Spring Return



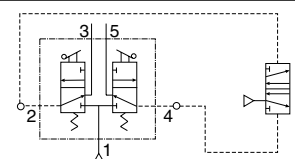
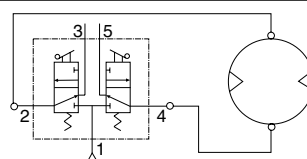
ROSS pendant control valves are a durable pneumatic solution that can be used anywhere manual control of devices is needed, such as an air hoist, air motor, or counterbalance cylinder. Ideal for use on or with material handling devices such as overhead cranes or air hoists, ROSS pendant control valves can withstand even the toughest environments.

Application Data

Dual 2/2 - High Flow



Dual 3/2 Air Hoist



Bi-directional Air Motor

To convert a Dual 3/2 into a Dual 2/2:

Plug ports 3 and 5. Connect supply line to port 2.

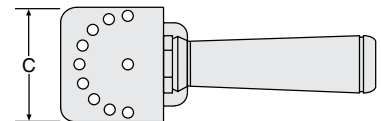
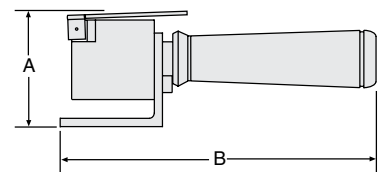
Port 1 becomes the outlet and port 4 becomes the exhaust port.

Single 3/2 - The Single 3/2 pendant control valve may be used anywhere that requires manual 3/2 control, such as operating small single acting cylinders or pressurizing vacuum cups for quick release. Ideal for use on or with material handling devices. Spring-return rubber poppet internals provide dependable shifting, long life, and low cost.

Dual 2/2 - Ideal for use on or with material handling devices. Spring-return rubber poppet internals provide dependable shifting, long life, and low cost.

Dual 3/2 - Ideal for use on or with material handling devices. Twin Pacer® inserts ensure reliability, dirt tolerance, and easy maintenance. May be used as a pilot valve convertible to a dual 2/2 function.

Triple 3/2 - The Triple 3/2 pendant control valve may be used anywhere that three independent manual outputs are needed. Provides remote pilot signals to pressure controlled valves. Three Pacer® inserts ensure reliability and dirt tolerance.



Model Description	Pipe Size	Valve Model Number	C _v		Dimensions inches (mm)			Weight lb (kg)
			1-2	2-3	A	B	C	
Single 3-way; one lever, no handle	1/4"	2025A2904	0.24	0.42	4.7 (120)	6.0 (170)	1.8 (46)	1.0 (0.5)
Dual 2-way high flow; no levers/handle	1/4"	1443H75	0.73	0.55	3.1 (78)	7.2 (182)	2.8 (70)	0.8 (0.4)
Dual 2-way high flow; two levers only	1/4"	2025A2901	0.73	0.55	3.1 (78)	7.2 (182)	2.8 (70)	1.0 (0.5)
Dual 2-way high flow; two levers/handle	1/4"	3900A0378	0.73	0.55	3.1 (78)	7.2 (182)	2.8 (70)	1.7 (0.8)
Dual 3-way; no levers/handle	1/8"	1442H75	0.24	0.42	2.9 (73)	7.2 (182)	2.8 (70)	0.7 (0.3)
Dual 3-way; two levers only	1/8"	2025A1900	0.24	0.42	2.9 (73)	7.2 (182)	2.8 (70)	0.9 (0.4)
Dual 3-way; two levers/handle	1/8"	3900A0379	0.24	0.42	2.9 (73)	7.2 (182)	2.8 (70)	1.6 (0.7)
Triple 3-way; no levers/handle	1/4"	1466H75	0.24	0.42	2.8 (71)	7.2 (182)	2.8 (70)	1.2 (0.5)
Triple 3-way; three levers only	1/4"	2025A2902	0.24	0.42	2.8 (71)	7.2 (182)	2.8 (70)	1.6 (0.7)
Triple 3-way; three levers/handle	1/4"	3900A0407	0.24	0.42	2.8 (71)	7.2 (182)	2.8 (70)	2.3 (1.0)

STANDARD SPECIFICATIONS: For valves on this page.

Ambient Temperature: 40° to 120°F (4° to 50°C).

Media Temperature: 40° to 175°F (4° to 50°C).

Flow Media: Filtered air; 5 micron recommended.

Inlet Pressure: 0 to 150 psig (0 to 10 bar).

IMPORTANT NOTE: Please read carefully and thoroughly all of the **CAUTIONS** on the inside back cover.

Cautions

PRE-INSTALLATION or SERVICE

1. Before servicing a valve or other pneumatic component, be sure that all sources of energy are turned off, the entire pneumatic system is shut off and exhausted, and all power sources are locked-out (ref: OSHA 1910.147, EN 1037).
2. All ROSS products, including service kits and parts, should be installed and/or serviced only by persons having training and experience with pneumatic equipment. Because any installation can be tampered with or need servicing after installation, persons responsible for the safety of others or the care of equipment must check every installation on a regular basis and perform all necessary maintenance.
3. All applicable instructions should be read and complied with before using any fluid power system in order to prevent harm to persons or equipment. In addition, overhauled or serviced valves must be functionally tested prior to installation and use.
4. Each ROSS product should be used within its specification limits. In addition, use only ROSS parts to repair ROSS products. Failure to follow these directions can adversely affect the performance of the product or result in the potential for human injury.

FILTRATION and LUBRICATION

5. Dirt, scale, moisture, etc. are present in virtually every air system. Although some valves are more tolerant of these contaminants than others, best performance will be realized if a filter is installed to clean the air supply, thus preventing contaminants from interfering with the proper performance of the equipment. ROSS recommends a filter with a 5-micron rating for normal applications.
6. All standard ROSS filters and lubricators with polycarbonate plastic bowls are designed for compressed air applications only. Do *not* fail to use the metal bowl guard, where provided, to minimize danger from high pressure fragmentation in the event of bowl failure. Do not expose these products to certain fluids, such as alcohol or liquefied petroleum gas, as they can cause bowls to rupture, creating a combustible condition, hazardous leakage, and the potential for human injury. Immediately replace a crazed, cracked, or deteriorated bowl. When bowl gets dirty, replace it or wipe it with a clean dry cloth.

7. Only use lubricants which are compatible with materials used in the valves and other components in the system. Normally, compatible lubricants are petroleum base oils with oxidation inhibitors, an aniline point between 180°F (82°C) and 220°F (104°C), and an ISO 32, or lighter, viscosity. Avoid oils with phosphate type additives which can harm polyurethane components, potentially leading to valve failure and/or human injury. If you have questions regarding whether a lubricant used on your system is compatible with ROSS products, please contact ROSS.

AVOID INTAKE/EXHAUST RESTRICTION

8. Do not restrict the air flow in the supply line. To do so could reduce the pressure of the supply air below the minimum requirements for the valve and thereby cause erratic action.
9. Do not restrict a valve's exhaust port as this can adversely affect its operation. Exhaust silencers must be resistant to clogging and have flow capacities at least as great as the exhaust capacities of the valves. Contamination of the silencer can result in reduced flow and increased back pressure.

ROSS expressly disclaims all warranties and responsibility for any unsatisfactory performance or injuries caused by the use of the wrong type, wrong size, or inadequately maintained silencer installed with a ROSS product.

POWER PRESSES

10. Mechanical power presses and other potentially hazardous machinery using a pneumatically controlled clutch and brake mechanism must use a press control double valve with a monitoring device. A double valve without a self-contained monitoring device should be used only in conjunction with a control system which assures monitoring of the valve. All double valve installations involving hazardous applications should incorporate a monitoring system which inhibits further operation of the valve and machine in the event of a failure within the valve mechanism.

ENERGY ISOLATION/EMERGENCY STOP

11. Per specifications and regulations, ROSS **L-O-X**® and manual **L-O-X**® with **EEZ-ON**® operation products are defined as energy isolation devices, NOT AS EMERGENCY STOP DEVICES.

Warranty

Products manufactured by ROSS are warranted to be free of defects in material and workmanship for a period of one year from the date of purchase. ROSS' obligation under this warranty is limited to repair or replacement of the product or refund of the purchase price paid solely at the discretion of ROSS and provided such product is returned to ROSS freight prepaid and upon examination by ROSS such product is found to be defective. This warranty shall be void in the event that product has been subject to misuse, misapplication, improper maintenance, modification or tampering. THE WARRANTY EXPRESSED ABOVE IS IN LIEU OF AND EXCLUSIVE OF ALL OTHER WARRANTIES AND ROSS EXPRESSLY DISCLAIMS ALL OTHER WARRANTIES EITHER EXPRESSED OR IMPLIED WITH RESPECT TO MERCHANTABILITY OR FITNESS FOR A PARTICULAR PURPOSE. ROSS MAKES NO WARRANTY WITH RESPECT TO ITS PRODUCTS MEETING THE PROVISIONS OF ANY GOVERNMENTAL OCCUPATIONAL SAFETY AND/OR HEALTH LAWS OR REGULATIONS. IN NO EVENT SHALL ROSS BE LIABLE TO PURCHASER, USER, THEIR EMPLOYEES OR OTHERS FOR INCIDENTAL OR CONSEQUENTIAL DAMAGES WHICH MAY RESULT FROM A BREACH OF THE WARRANTY DESCRIBED ABOVE OR THE USE OR MISUSE OF THE PRODUCTS. NO STATEMENT OF ANY REPRESENTATIVE OR EMPLOYEE OF ROSS SHALL EXTEND THE LIABILITY OF ROSS AS SET FORTH HEREIN.





GLOBAL Reach with a LOCAL Touchsm

ROSS CONTROLS

Troy, MI., U.S.A.

Telephone: + 1-248-764-1800

Fax: + 1-248-764-1850

In the United States:

Customer Service: 1-800-GET ROSS
(438-7677)

Technical Service: 1-888-TEK-ROSS
(835-7677)

www.rosscontrols.com

ROSS EUROPA GmbH

Langen, Germany

Telephone: + 49-6103-7597-0

Fax: + 49-6103-74694

Email: info@rosseuropa.com

www.rosseuropa.com

ROSS ASIA K.K.

Kanagawa, Japan

Telephone: + 81-427-78-7251

Fax: + 81-427-78-7256

www.rossasia.co.jp

ROSS UK Ltd.

Birmingham, United Kingdom

Telephone: + 44-121-559-4900

Fax: + 44-121-559-5309

Email: sales@rossuk.co.uk

ROSS CONTROLS INDIA Pvt. Ltd.

Chennai, India

Telephone: + 91-44-2624-9040

Fax: + 91-44-2625-8730

Email: rossindia@airtelbroadband.in

ROSS SOUTH AMERICA Ltda.

São Paulo, Brazil CEP 09725-020

Telephone: + 55-11-4335-2200

Fax: + 55-11-4335-3888

Email: vendas@ross-sulamerica.com.br

DIMAFLUID s.a.s.

Saint Ouen, France

Telephone: + 33-01-49-45-65-65

Fax: + 33-01-49-45-65-30

Email: dimafluid@dimafluid.com

www.dimafluid.com

ROSS CONTROLS CHINA Ltd.

Shanghai, China

Telephone: + 86-21-6915-7951

Fax: + 86-21-6915-7960

Email: alvinzhurong@vip.163.com

Your local ROSS distributor is:

There are ROSS Distributors Throughout the World

To meet your requirements across the globe, ROSS distributors are located throughout the world. Through ROSS or its distributors, guidance is available for the selection of ROSS products, both for those using pneumatic components for the first time and those designing complex pneumatic systems.

This catalog presents an overview of the extensive ROSS product line. Other literature is available for engineering, maintenance, and service requirements. If you need products or specifications not shown here, please contact ROSS or your ROSS distributor. They will be happy to assist you in selecting the best product for your application.