

METAL[®] WORK

P N E U M A T I C



lineonline[®]



ITALIAN SUBSIDIARIES: GROUP

ARCORE
P SERVICE s.r.l.
Via Altiero Spinelli, 57
20043 Arcore MI
Tel. 039 61 80 056 - 039 61 50 064
Fax 039 60 120 29
www.pservice.it
pservmz@pservice.it

LECCO
P SERVICE s.r.l.
Via Provinciale, 39
23848 Oggiono LC
Tel. 0341 26 67 11
Fax 0341 26 67 12
www.pservice.it
pservlc@pservice.it

PARMA
P SERVICE s.r.l.
P.za Lunardi 27/A
43100 Parma PR
Tel. 0521 24 09 64
Fax 0521 24 28 47
www.pservice.it
pservpr@pservice.it

VARESE
P SERVICE s.r.l.
Via Gasparoli, 197
21012 Cassano Magnago VA
Tel. 0331 28 09 20
Fax 0331 28 09 21
www.pservice.it
pservva@pservice.it

BARI
P SERVICE s.r.l.
Via S. Magno km 0,400
(zona industriale)
70033 Corato BA
Tel. 080 898 73 94 r.a.
Fax 080 898 71 45
infosud@pfisrl.it

MANTOVA
P SERVICE s.r.l.
Viale d/Libertà, 9 - 46030
San Giorgio di Mantova MN
Tel. 0376 37 41 81
Fax 0376 37 47 27
www.pservice.it
pservmn@pservice.it

PAVIA
P SERVICE s.r.l.
Via F.lli Cagnoni, 7/9
27029 Vigevano PV
Tel. 0381 83 333
Fax 0381 82 733
www.pservice.it
pservpv@pservice.it

VERONA
P SERVICE s.r.l.
Via Del Perlar, 92
37135 Verona VR
Tel. 045 50 31 23
Fax 045 82 50 038
www.pservice.it
pservvr@pservice.it

BERGAMO
P SERVICE s.r.l.
Via Vienna, 28
Loc. Verdellino Zingonia
24040 Verdellino BG
Tel. 035 88 53 79
Fax 035 48 20 492
www.pservice.it
pservbg@pservice.it

MILANO - ARESE
P SERVICE s.r.l.
Via Montegrappa 40/44
20020 Arese MI
Tel. 02 93 58 17 48 r.a.
Fax 02 93 58 17 55
www.pservice.it
pservar@pservice.it

RIMINI
P SERVICE s.r.l.
Via Piane, 23/A
47853 Coriano RN
Tel. 0541 65 87 15 - 0541 65 81 36
Fax 0541 65 68 69
www.pservice.it
pservrna@pservice.it

VICENZA
P SERVICE s.r.l.
Via Progresso, 70
36035 Marano Vicentino VI
Tel. 0445 56 05 90
Fax 0445 56 01 33
www.pservice.it
pservvi@pservice.it
FILIALE DI PADOVA
Via Pelosa, 78
35030 Caselle di Selvazzano PD
Tel. 049 89 78 997
Fax 049 89 86 966
www.pservice.it
pservvp@pservice.it
FILIALE DI ALTE CECCATO
Via Milano SS.11
36041 Alte di Montebelluna
Maggiore VI
Tel. 0444 69 85 95
Fax 0444 69 87 23

BOLOGNA
P SERVICE s.r.l.
Via dell'Arcoveggio, 190/d
40129 Bologna BO
Tel. 051 70 27 11
Fax 051 70 31 14
www.pservice.it
pservbo@pservice.it

MILANO - TREZZANO
P SERVICE s.r.l.
Via Copernico, 54/56 Stabile 36
20090 Trezzano sul Naviglio MI
Tel. 02 44 50 235
Fax 02 44 50 635
www.pservice.it
pservtz@pservice.it

 **TORINO**
METAL WORK s.r.l.
Via Bruino, 22/2
10040 Rivalta TO
Tel. 011 90 32 666
Fax 011 90 03 632
www.pservice.it
metalwto@pservice.it
FILIALE DI GENOVA
Via Isola del Vescovo, 65/67
16138 Genova GE
Tel. 010 83 58 088
Fax 010 83 65 643
pservge@pservice.it

BRESCIA
P SERVICE S.p.A.
Via del Mella, 37 - Z.I. Fornaci
25131 Brescia BS
Tel. 030 35 855 r.a.
Fax 030 35 81 256
www.pservice.it
pservbs@pservice.it

MODENA
P SERVICE s.r.l.
Via S. Giovanni Bosco, 267
41100 Modena MO
Tel. 059 23 98 06
Fax 059 23 98 76
www.pservice.it
pservmo@pservice.it

TREVISO
P SERVICE s.r.l.
Via P. A. Gemelli, 34
31040 Postioma di Paese TV
Tel. 0422 48 45 78 r.a.
Fax 0422 48 45 79
www.pservice.it
pservtv@pservice.it

CREMONA
P SERVICE s.r.l.
Via Sesto, 62
26100 Cremona CR
Tel. 0372 27 64 8 - 32 26 7
Fax 0372 45 71 42
www.pservice.it
pservcr@pservice.it

NOVARA
P SERVICE s.r.l.
Via Nibbia, 4A
28060 S. Pietro Mosezzo
Fr. Nibbia NO
Tel. 0321 43 79 86
Fax 0321 43 79 93
www.pservice.it
pservno@pservice.it

ITALY AUTHORISED DEALER

AVELLINO
A.R.A. s.a.s.
di C. Argenziano & C.
Via Appia, 123/125
83042 Atripalda AV
Tel. 0825 62 56 03
Fax 0825 62 47 19
www.araforniture.it
info@araforniture.it

MACERATA
TORRESI RAFFAELE & C s.n.c.
Via Sandro Pertini, 51
Zona Industriale A
62012 Civitanova Marche MC
Tel. 0733 81 11 20 r.a.
Fax 0733 81 11 30
mitorre@tin.it

PADOVA
ATI s.a.s.
Via Facca, 58
SS Valsugana
35013 Cittadella PD
Tel. 049 94 01 777
Fax 049 94 00 665
www.aticompressori.it
ati@aticompressori.it

UDINE
M.P. AUTOMAZIONI s.n.c.
DI ZUCCOLO NILDO & C.
Via IV Novembre, 86
33010 Feletto Umberto UD
Tel. 0432 57 52 56
Fax 0432 57 50 31
mail@mpautomazioni.191.it

CASERTA
TECNOUTENSILI s.n.c.
V.le Carlo III P.co Matilde 45/47
81020 San Nicola La Strada CE
Tel. 0823 45 91 57
Fax 0823 45 98 77
tecnoute2@virgilio.it

NAPOLI
OLEODINAMICA & PNEUMATICA s.a.s.
di Ardolino G. & Co.
Via M.le Manfredi, 24
80039 Saviano NA
Tel. 081 82 11 468
Fax 081 82 11 181
oleod.e.pneum@libero.it

ROMA
CASA DEL CUSCINETTO s.r.l.
Via Casilina, 57/57A
00182 Roma RM
Tel. 06 70 70 031
Fax 06 70 27 217
casacuscinetto.roma@skf.it

VENEZIA
FLUID-PRESS s.r.l.
Via Kennedy, 37
30027 S. Donà di Piave VE
Tel. 0421 42 891
Fax 0421 22 01 22
info@fluidpress.com

FIRENZE
TECHNOTEAM s.r.l.
Via Baldanzese, 241
50041 Calenzano FI
Tel. 055 88 25 157
Fax 055 88 77 836
technoteam@technoteamsrl.it

NAPOLI
R.C.P. s.a.s.
di Casale Aniello & C.
Via Nuova delle brecce, 176
80147 Napoli NA
Tel. 081 75 24 238
Fax 081 75 22 067
www.rcpcasale.it
info@rcpcasale.it

TRENTO
TRE.FIN s.r.l.
Via Maccani, 197
38100 Trento TN
Tel. 0461 82 55 75
Fax 0461 82 48 02
www.trefin-tn.it
info@trefin-tn.it

ITALY AGENCY

CAMPANIA
VINCENZO ESPOSITO
Via F. Imparato, 198
80141 Napoli NA
Tel. 081 75 20 125
Fax 081 55 90 889
esposito.vincen@libero.it

LAZIO
MARCO BARROVECCHIO
Via P. Marchisio, 251
00173 Roma RM
Tel. 06 72 20 060
Fax 06 72 10 980
Cell. 336 614307
barrovecchio.m@tiscali.it

PUGLIA
DI BIASI FABIO
Via P.A. della Bella, 52/A
71100 Foggia FG
Tel./Fax 0881 66 59 12
Cell. 0348 3330802
amedib@tin.it

SARDEGNA
G.CARLO LAI
Via Ranieri Sampante, 6
09121 Cagliari CA
Tel./Fax 070 280235
Cell. 328 3517832
lai.gian@tiscali.it

SICILIA
OTTOLENGHI FEDERICO
di Ferrari Gabriella
Via Nazionale, 95
95020 Cannizzaro CT
Tel./Fax 095 27 17 54
ottolenghi@tin.it

FOREIGN SUBSIDIARIES:

<p>EUROPE AUSTRIA Metal Work Pneumatic GmbH Josef - Willberger - Strasse 1 A - 6020 Innsbruck - Austria Tel. 0043 512 26 22 61 Fax 0043 512 26 22 62 metalwork@metalwork.at</p> <p>BELGIUM Metal Work België/Belgique Vinkenbaan 19 - 1820 Perk - Belgium Tel. 02 75 16 120 Fax 02 75 16 161 metalwork@metalworkpneumatic.be</p> <p>DENMARK Metal Work Danmark A/S Korskildevej 1 2670 Greve - Denmark Tel. 70 22 23 11 Fax 70 22 27 59 metalwork@metalwork.dk</p> <p>FINLAND Metal Work Finland OY Lakkiseppäntie 4 00620 Helsinki - Finland Tel. 09 731 38 270 Fax 09 272 2712 metalwork@metalwork.fi</p> <p>FRANCE Metal Work France Sarl Parc d'activités de l'Esplanade 14 Rue Enrico Fermi 77462 Saint Thibault Des Vignes - France Tel. 01 60 94 00 00 Fax 01 60 94 01 94 metalwork@metalwork.fr AGENCE SUD-EST Parc du Chêne 7/9 Rue du 35 ième Régiment d'Aviation BP 50 69672 Bron Cedex - France Tel. 04 72 15 00 00 Fax 01 60 94 01 94</p> <p>GERMANY Metal Work Deutschland GmbH Keltensstrasse 3a 85095 Denkendorf - Germany Tel. 08466 9514-0 Fax 08466 9514-26 metalwork@metalwork.de</p>	<p>HOLLAND Metal Work Nederland B.V. Postbus 90 - 6710 Bb Ede Voltastraat 9 - 6716 AJ Ede - Holland Tel. 0031 0318 66 51 11 Fax 0031 0318 66 51 15 metalwork@metalwork.nl</p> <p>POLSKA Metal Work Polska Sp Z.o.o. Ul. Bystra 15 A - 61-366 Poznan - Polska Tel. 0 61 65 01 840 Fax 0 61 65 01 849 metalwork@metalwork.pl</p> <p>SPAIN Metal Work Iberica S.A. Pol. Ind. Can Magi c/Can Magi, 9 08210 Barbera del Valles (Barcelona) España metalwork@metalwork.es Tel. 937 180 244 Fax 937 188 070 DELEGACION NORTE Tel. 946 203 999 Fax 946 202 642 48220 Abadino (Bizkaia) DELEGACION CENTRO Tel. 91 658 60 48 Fax 91 658 63 51 28700 Sebastian de los Reyes (Madrid) DELEGACION LEVANTE Tel. 96 510 62 92 Fax 96 510 62 93 03113 Alicante</p> <p>SWEDEN Metal Work Sverige AB Modemgatan, 7 235 39 Vellinge - Sweden Tel. 040 42 07 00 Fax 040 42 07 20 metalwork@metalwork.se</p> <p>UK Metal Work Uk Ltd Blackhill drive - Wolverton Mill Milton Keynes - MK 12 5TS Tel. 01908 22 22 88 Fax 01908 22 28 24 sales@metalwork.co.uk</p>	<p>AMERICAS BRAZIL Dover - Metal Work Group Dover Controles Pneumáticos Ltda R.G.DO SUL: Av. Thomaz Edison, 2648 Scharlau, CEP. 93125 - 140 São Leopoldo - RS - Brazil Tel. 51 590 - 7100 Fax 51 590 - 7111 dover@doverautomacao.com.br</p> <p>USA Metal Work Pneumatic USA, Inc. 1120 Eden Road, Suite 106 Arlington, TX 76001 Tel. 817 - 701 - 4000 Fax 817 - 701 - 4004 metalwork@metalwork.org</p>	<p>ASIA - OCEANIA AUSTRALIA Metal Work AUSTRALASIA PTY Ltd P.O. Box 2638 - North Parramatta 1750 Unit 1/6 Hume Road Smithfield NSW 2164 Tel. 61 2 97 25 35 99 Fax 61 2 97 25 35 61 metalworksydney@optusnet.com.au VICTORIA BRANCH N 10 Mickle Street Dandenong VIC 3175 - Australia Tel. 03 97 06 67 18 Fax 03 97 06 67 19</p> <p>MALAYSIA Metal Work Pneumatic (Malaysia) Sdn Bhd 52 Jalan TPJ 5 - Taman Perindustrian Jaya 47200 Petaling Jaya - Selangor - Malaysia Tel. 0060 37 84 54 228 Fax 0060 37 84 50 228 mwpmal@streamyx.com</p> <p>THAILAND Metal Work Pneumatic (Thailand) Co. Ltd 29/67 Moo 2, 345 Road Lumpo, Bangbuatong, Nonhaburi 11110 - Thailand Tel. 00662 961 7000 Fax 00662 961 7227 metalwork@metalwork.co.th</p>
--	--	---	--

FOREIGN AUTHORISED DEALER

<p>EUROPE BULGARIA TechnoKom Co Ltd 4, Naycho Tzanov str. 4000 Plovdiv - Bulgaria Tel. 00359 32 665 088 Fax 00359 32 665 099 www.technokom.bg info@technokom.bg</p> <p>CYPRUS Andreas Chr. - Demetriades Ltd. Eakos Street n°3 - Pailouriotissa P.O. Box 29068 1620 Nicosia - Cipro Tel. 00357 22 43 14 50 (4 lines) Fax 00357 22 43 73 15 demanltd@spidernet.com.cy</p> <p>EIRE Pneumatics Ltd Old Naas Road - Bluebell Dublin 12 - Eire Tel. 003531 45 68 111 Fax 003531 45 68 108</p> <p>GREECE Har. E. Akritidis & Co. 26 Str. Monastiriou P.O. Box 40162 56000 Thessaloniki - Greece Tel. 0030 23 10 52 24 11 Fax 0030 23 10 53 59 92 akritidi@otenet.gr</p> <p>MACEDONIA Devit Compressor and Pneumatic Systems Ul. Razlovecko Vostante 24/13 MK - 1000 SKOPIE - Macedonia Tel. 0038 97 02 25 674 Fax 0038 92 36 15 48 devit@unet.com.mk</p>	<p>NORWAY Tess Engros as Postboks 1540 N-3007 Drammen - Norway Tel. 32 84 40 00 Fax 32 84 40 01 www.tess.no ts@tess.no</p> <p>PORTUGAL Jorge A.M. Costa Ltda Rua Padre Americo, 170 03700 S. Joao de Madeira Portugal Tel. 0035 1256 20 06 10 Fax 0035 1256 20 06 19</p> <p>CZECH REPUBLIC VT-FLEX s.r.o. Stanislavskeho 582 721 00 Ostrava Czech Republic Tel. 00420 59 67 48 577 Fax 00420 59 67 28 010 www.vtflex.com sales@vtflex.com</p> <p>ROMANIA Novo trade s.r.l. Sir. Libertatii, 315 Apahida, Cluj - Romania Tel. 004026 44 06 61 Fax 004026 44 06 613 novotech@novotech.ro</p> <p>SLOVENIA Lipro d.o.o. Smarska C. 18 - 06000 Koper Capodistria - Slovenia Tel. 0038 65 62 51 343 Fax 0038 65 62 51 344 lipro@siol.net</p>	<p>SWITZERLAND Tri-Matic AG Bösch 82 - CH 6331 Hünenberg - Switzerland Tel. 0041 41 780 22 22 Fax 0041 41 780 03 60 www.tri-matic.ch info@tri-matic.ch</p> <p>HUNGARY ENTRA-SYS KFT Bakay Nándor u.24 H-6724 Szeged - Hungary Tel. 00366 24 21 403 00366 25 47 267 00366 25 47 268 Fax 00366 24 68 478 entra-sys@vnet.hu</p> <p>TURKEY HPA Teknoloji Geliştirme Makina ve Yedek Parça İmalat San. İc ve Diş Tic. Ltd. Şti. 1201/1 Sokak No: 4/A P21 Yenisehir - Izmir - Turkey Tel. +90 232 469 7961 - 449 33 92 449 0962 - 449 36 01 Fax +90 232 433 9625 - 457 17 89</p> <p>EGYPT El Masry for Industrial Services Ltd 5 El Wakkad Str. Abbassia - 11371 Cairo - Egypt Tel. 00202 27 45 716 Fax 00202 27 42 916 t.elmasry@menanet.net</p>	<p>AFRICA MAROCCO Afric Roulement 125 - 129, Bd. Ibn Tachfine Casablanca - Morocco Tel. 022 40 70 10 - 13 Fax 022 40 70 14 www.aroulement.com roulement@iam.net.ma</p> <p>SOUTH AFRICA CB Pneumatics (Pty) Ltd Unit 14, Southern Life Ind. Village Crocker Street Vvedeville Ext 6 - Germiston South Africa Tel. 0027 11 90 25 448 Fax 0027 11 90 24 656 cbpnet@netactive.co.za</p>	<p>AMERICAS URUGUAY Fidemar S.A. Minas 1634 - CP 11200 Montevideo - Uruguay Tel. 598 2 40 21 717 Fax 598 2 40 21 719 www.fidemar.com.uy info@fidemar.com.uy</p> <p>VENEZUELA Neumatica Rotonda c.a. Prolongacion Av. Michelena C. C. Alias, Local B-9 Valencia, Edo. Carabobo Venezuela Tel. 0058 241 83 26 464 Fax 0058 241 83 26 283 neumatica@telcel.net.ve</p>	<p>ASIA - OCEANIA UNITED ARAB EMIRATES ACME Industrial Hardware Trading L.L.C. P.O. Box 3636 Dubai United UAE Tel. 009714 22 38 897 Fax 009714 22 16 698 amcedxb@emirates.net.ae</p> <p>HONG KONG Shing Wai Supplies Co.Ltd. 389, Reclamation Street, G/F Mongkok, Kowloon Hong Kong Tel. 00852 2 78 01 567 Tel. 00852 2 78 11 179 Fax 00852 2 78 01 899</p> <p>ISRAEL Conlog Ltd 7 Leshem St. 49134 Petach Tikva - Israel Tel. 00972 3 92 69 595 Fax 00972 3 92 33 367 www.conlog.co.il conlog@conlog.co.il</p> <p>NEW ZEALAND Valves & Fittings Ltd J1/138 Plunket Ave - Manukau City Auckland - New Zealand Tel. 64 9 261 11 11 Fax 64 9 261 11 12 www.valves.co.nz sales@valves.co.nz</p>
--	---	---	--	---	--

Whoever claimed the world of fittings for pneumatic pipes had nothing more to offer?

A new market entry is a line of brand-new products based on a simple yet revolutionary idea; including the components required for all the pneumatic functions in a single body,

a technopolymer plastic fitting. This is the lineonline generation, a range of products for fitting on compressed-air systems. As with all new applications, it was important

to receive the signals from the market, analyze demand, and to converge them in a single project.

The following messages were received from the market:

Miniaturise

Pneumatic components must be small to enable the construction of neatly-engineered machines, and reduce the dimensions of pneumatic panels.

Lighten

Less weight, for moving parts, means less inertia and hence better acceleration and performance.

Integrate

The inclusion of different components in a single item cuts assembly times and the number of product codes, and makes miniaturisation easier.

Modularity

The use of modular items increases the designers' freedom and reduces the need for adaptors, supports and connections.

Aesthetics

If a pneumatic component is fitted on a machine in a visible position, its shape and colour must make the machine more pleasing to the eye.

Metal Work has tried to determine

... whether these principles could also be meaningful in the world of fittings, which is where lineonline comes in. There had never been something that looked like a pipe-pipe fitting yet was in actual fact a pressure regulator, something else that looked like previous versions but

was actually a flow regulator, and something else that looked suspiciously familiar yet was really a top-performance solenoid valve! We've managed to squeeze into a single unit main all the pneumatic functions – regulating the flow, regulating the capacity, cutting

off the flow manually or electrically, measuring the pressure, relieving the air ... and the list goes on.

In short, it is a fitting seen as a sort of brick (a Lego block, if you like) with which to build a whole new world of things pneumatic.

All the products can be connected in series or in parallel or in a combination of both.

...This allows total freedom when constructing pneumatic systems. With series connection, each module carries out a function linked to the following one. For example, there may be an RML pressure regulator followed by a MAN L gauge giving the value of the regulated pressure.

With parallel connection, each module performs a separate function. For example, a number of SOV L solenoid valves arranged in parallel gives a set of 3/2 solenoid valves that is small, lightweight and complete with fittings and reel. It is also possible to connect modules in series pneumatically, but

arrange them in parallel, in which case a pre-bent crescent-shaped pipe is provided.



All the items are available in a version

...for pipe-pipe connection, thank to the two push-in fittings, or for pipe-thread connection, adding an RU6 fitting with his male NPT thread. In the latter case the element can be mounted directly on the actuator, for

example the VSR L quick-relief valve (version with male thread) is mounted on the cylinder. On one side of the technopolymer body is an indelible pneumatic symbol in relief to help the user identify the

function and direction of flow. Two sizes are currently available: 1/4", with fittings for 1/4" pipes, and 5/16", with fittings for 5/16" pipes.

Fixing methods

All fixing methods are possible:

- On a wall, using the two transversal holes provided in all the bodies.
- On a plate, using the steel bracket provided.

- On a panel. This requires a hole in the panel and the Line-on-Line item is fixed using the ring nut provided. Note that all the control knobs on manual items have a smaller diameter than the size of the hole to make in the panel.

- Underneath, fixing the steel bracket under a piece of sheet metal.

The following ~~lineonline~~ products have been developed so far

RFL R:	in-line flow regulator
RML:	miniaturised in-line pressure reducer
VSR L:	in-line quick-relief valve
VNR L:	in-line check valve
V2V L:	in-line two-way on/off valve
V3V L:	in-line three-way on/off valve
MAN L:	in-line pressure gauge
LAM L:	in-line pressure display
SOV L:	in-line 3/2 NC or NO solenoid valve

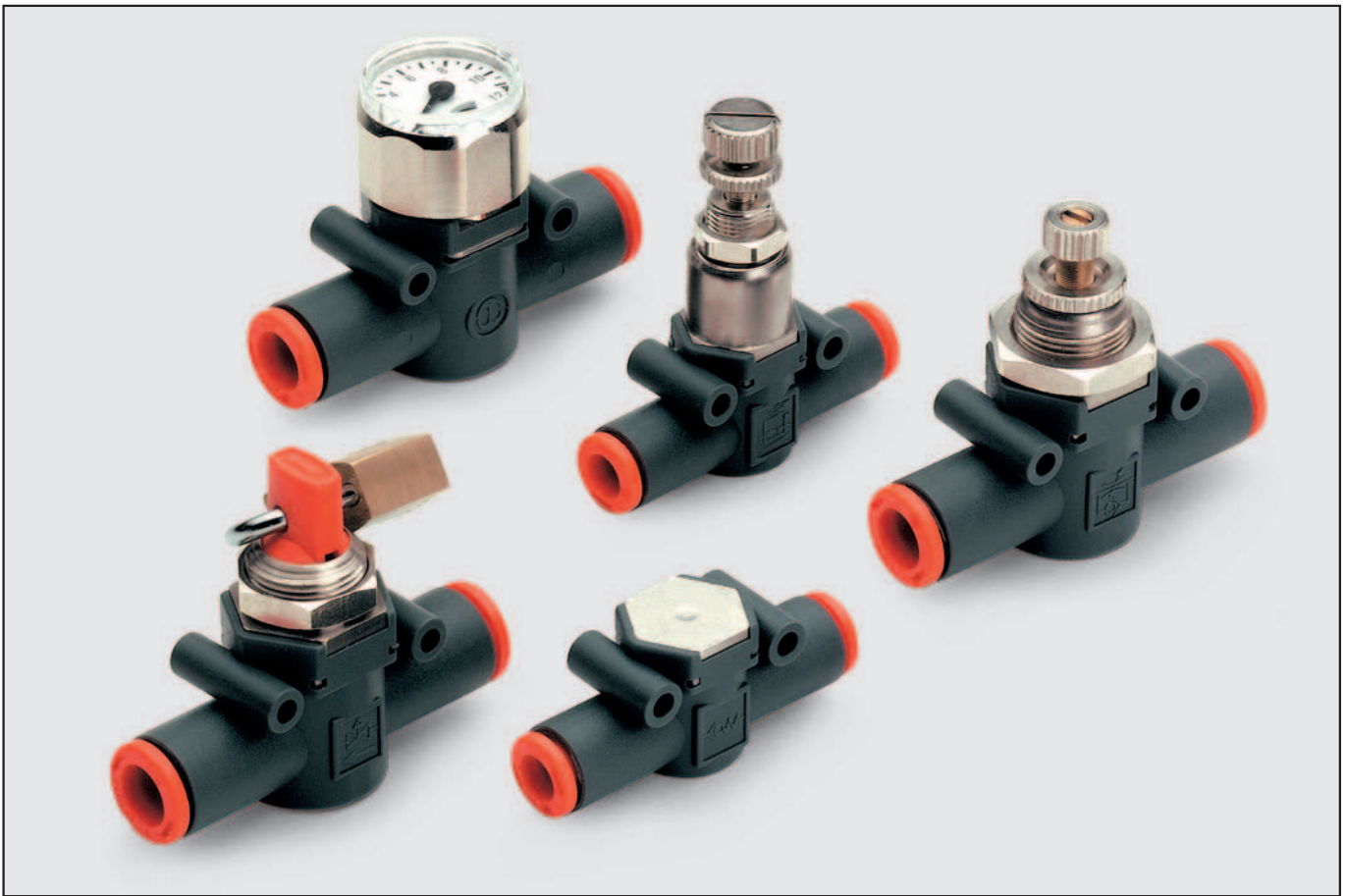
Let us take a closer look at one of these products.

The RML is a miniaturised pressure reducer capable of keeping a constant downstream pressure with a setting range of 14 to 116 psi, and 260 NL/min flow rate, measured at 87 Δp 14 psi. It can be used for numerous

applications. Mounted on a valve outlet, it can be used to regulate pressure at each utility as it is only 0.57 inc wide (1/4" pipe) or 0.73 inc (5/16" pipe); or it is easy to mount on compact valve units. It can be

used as an economiser, by supplying the cylinder chamber with the minimum pressure required for the return movement.

Dott. Ing. Giorgio Guzzoni



Line on Line is an exclusive range of products for mounting on pneumatic circuits. With these small, highly efficient components it is possible to perform all pneumatic functions at any point of the circuit.

Line on Line is ultra-modular - the components can be connected in parallel, in series or combined parallel/series. All Line on Line products are available for pipe-pipe connection with two push in fittings. Adding an RU6 fitting, it is possible to have a pipe-NPT thread connection.

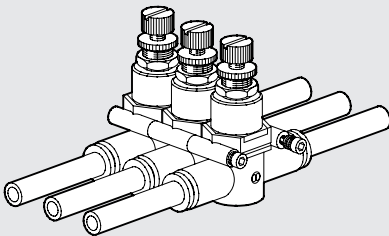
The body is made of technopolymer, giving a product that is extremely lightweight and compact.

One side of the body is marked with an indelible pneumatic symbol to facilitate identification and indicate the direction of flow.

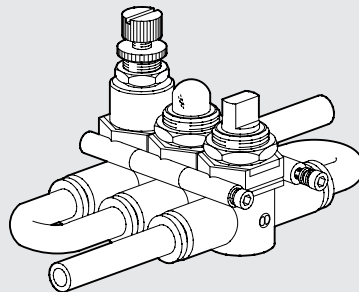


CONNECTION FREE

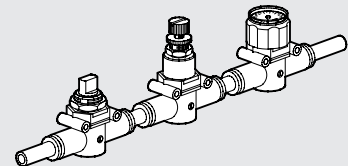
PARALLEL LINES



SERIAL LINE PARALLEL FITTING



SERIAL LINE IN-LINE FITTING



FIXING FREE

WALL FIXING

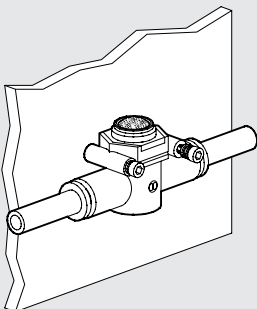
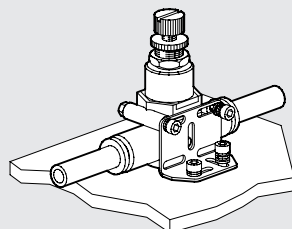
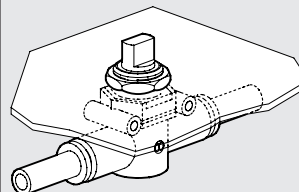


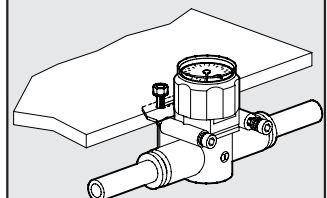
PLATE FIXING



PANEL FIXING

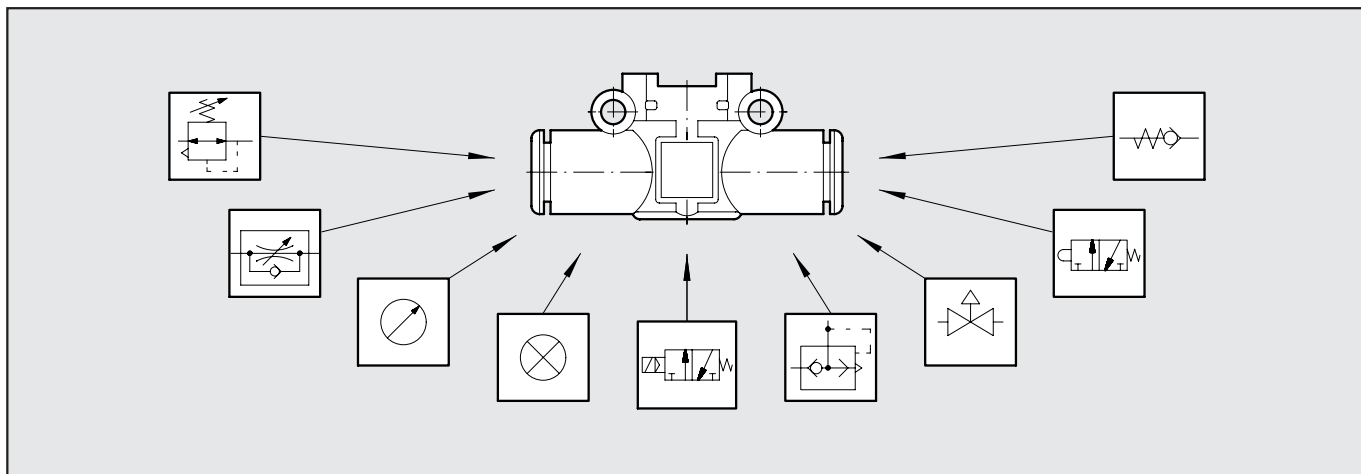


UNDER WALL FIXING

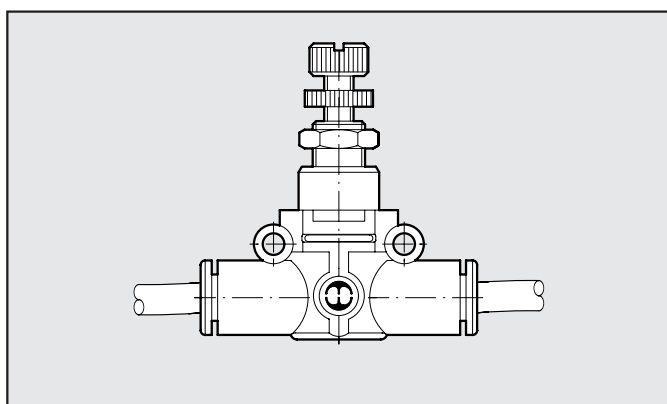




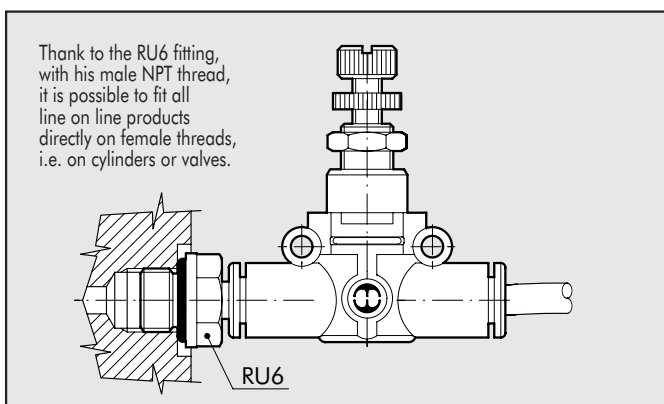
ALL THE PNEUMATIC FUNCTIONS WITH THE SAME EXTERNAL DIMENSIONS



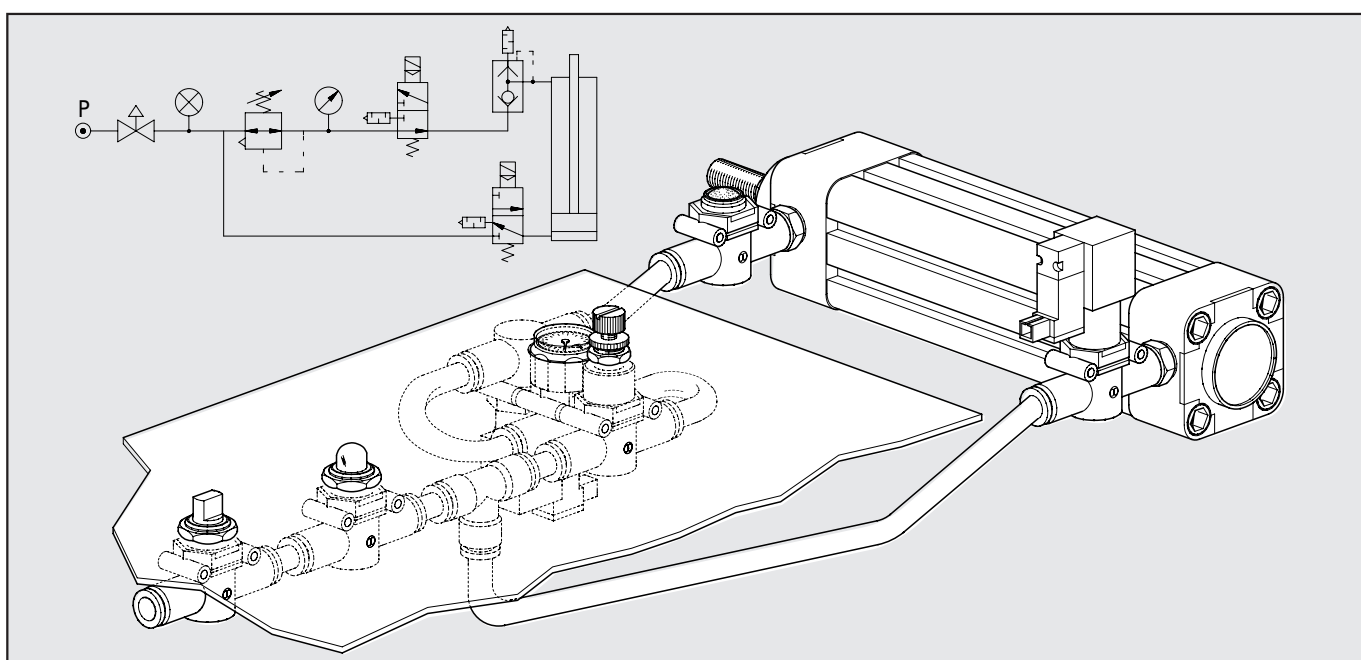
PIPE-PIPE



THREAD-PIPE



APPLICATION EXAMPLE



LINE-MOUNTED FLOW MICRO-REGULATOR WITH PUSH-IN FITTING

Serie RFL R

The RFL R flow micro-regulator belongs to the LINE ON LINE® family and can be connected in series or in parallel with all the other products.

The RFL R regulates the air input and thus the speed in pneumatic actuators. Two versions are available:

- Type U (unidirectional) regulates the flow only in one of the two directions of air flow. The following types of fitting can be mounted:

- Push-in input and output fitting

- Type B (bidirectional) regulates the flow in both directions of air flow. The following types of fitting can be mounted:

- Push-in input and output fitting

- Threaded port and push-in fitting

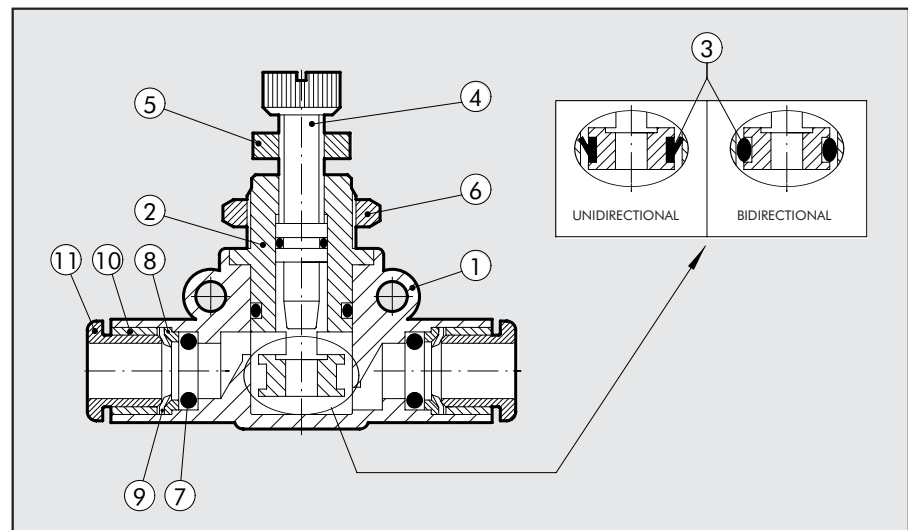
There are three possible types of assembly (see example on the following page).



TECHNICAL DATA		Ø 5/32	Ø 1/4	Ø 5/16
Max. operating pressure	psi		15 ÷ 150	
Temperature range	°C		-20 ÷ +60	
	°F		-4 ÷ +140	
Max flow rate on regulation at 90 psi	NI/min	155	450	850
Flow rate on relief at 90 psi	NI/min	160	550	950
Adjustment		Manual or using a screwdriver		
Internal system		Tapered needle		
Recommended pipe		Rilsan PA 11 – Nylon 6 – Polyamide 12 - Polypropylene		
Fluid		Lubricated or unlubricated filtered air		

COMPONENTS

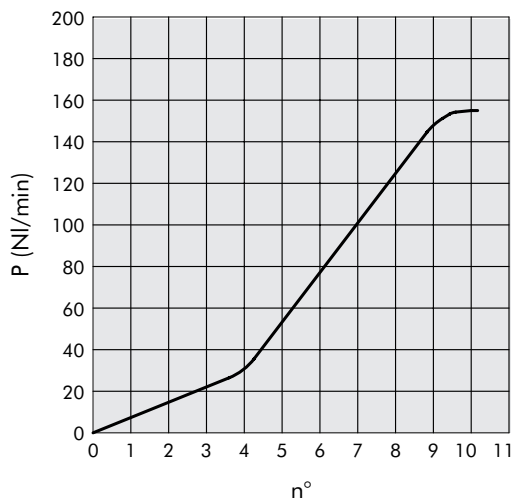
- ① Technopolymer body
- ② Nickel-plated brass seal support
- ③ NBR gasket
- ④ Brass adjusting needle
- ⑤ Nickel-plated brass needle ring nut
- ⑥ Wall fixing ring nut
- ⑦ NBR seal
- ⑧ Technopolymer spring ring
- ⑨ Stainless steel clip-on spring
- ⑩ Technopolymer stop bushing
- ⑪ Technopolymer release bushing



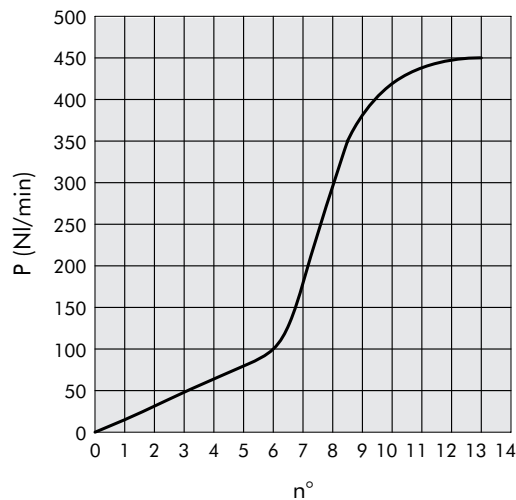


FLOW CHARTS

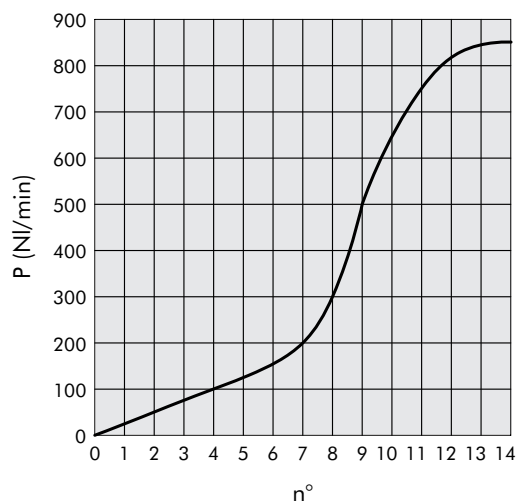
RFL R Ø 5/32



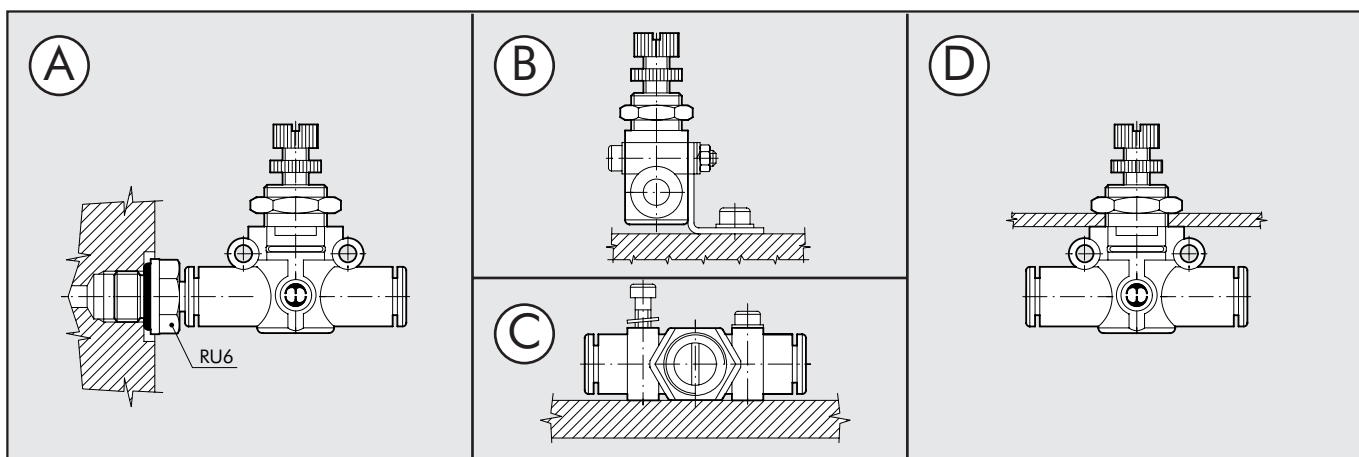
RFL R Ø 1/4



RFL R Ø 5/16



ASSEMBLY OPTIONS



How to mount the RFL R:

- Fig. A: Adding a RU6 fitting, with his male NPT thread, it is possible to mount the RFL R straight on to the actuator or the control valve.
- Fig. B: Fixing to the plate with the special SQU L bracket.
- Fig. C: There are two robust rings on the plastic body for fixing the RFL R straight onto the wall.
- Fig. D: The ring nut is screwed onto the threaded metal part of the RFL R body for panel mounting.

MINIATURE REDUCER, Series "RML"



The RML R miniature pressure regulator belongs to the LINE ON LINE® family and can be connected in series or in parallel with all the other products.

The miniature pressure regulator is available.

The miniature pressure regulator is fitted with a relief valve for over-pressure exhaust.

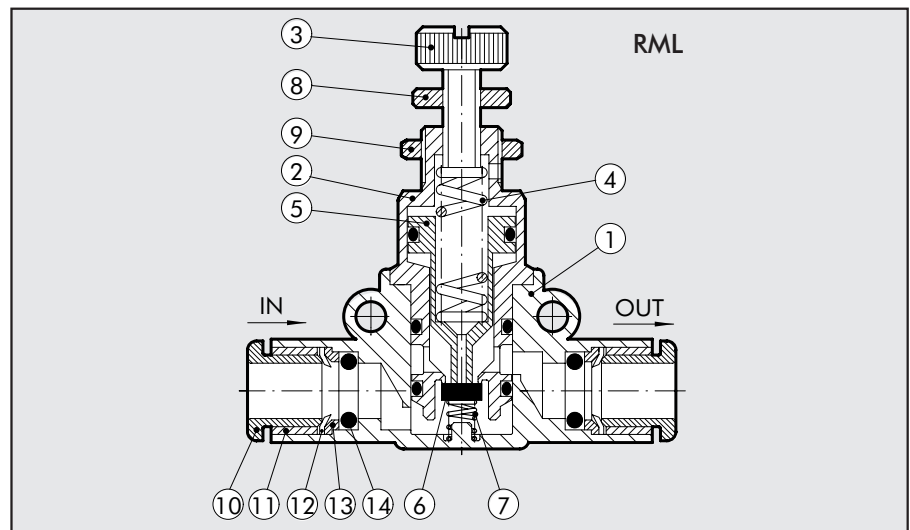
- Particularly suitable for use between the valve and actuator and as a pressure regulator in secondary branches of the pneumatic system.



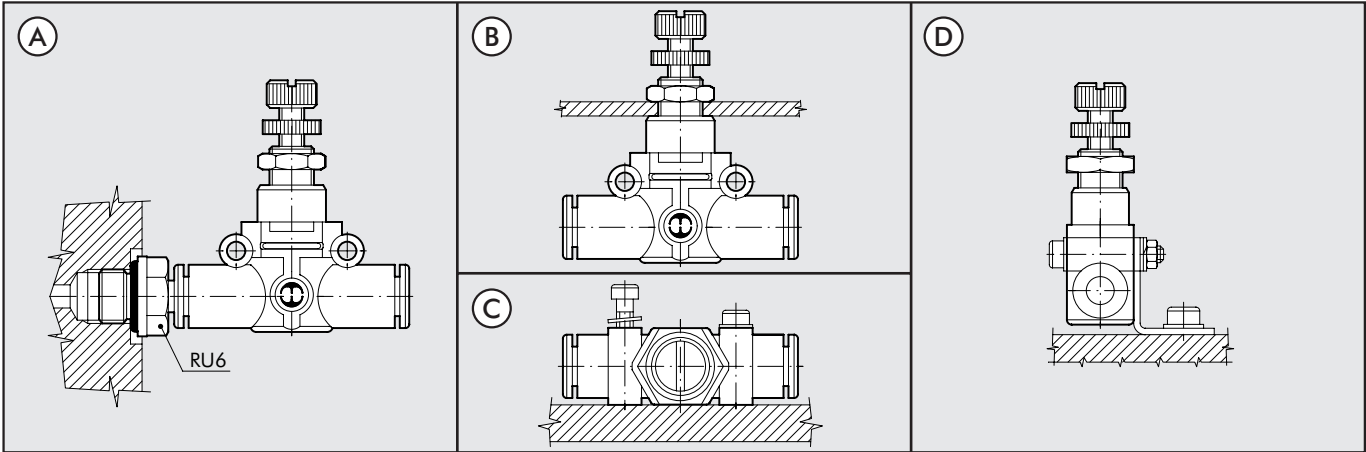
TECHNICAL DATA	RML Ø 1/4	RML Ø 5/16
Pipe coupling	Ø 1/4	Ø 5/16
Regulation range	15 ÷ 120 psi	
Inlet pressure	30 ÷ 150 psi	
Flow rate at 90 psi ΔP 14.5 psi	150 NI/min	260 NI/min
Flow rate on relief at 90 psi	400 NI/min	600 NI/min
Fluid	lubricated or unlubricated filtered air	
Max. temperature at 150 psi	-20 ÷ +60 °C	
	-4 ÷ +140 °F	
Assembly position	available	
Comments	In the miniature regulator the pressure must always be set upwards.	

COMPONENTS

- ① Technopolymer body
- ② Nickel-plated brass insert
- ③ Nickel-plated brass adjusting screw
- ④ Steel adjusting spring
- ⑤ Brass piston rod
- ⑥ NBR shutter
- ⑦ Stainless steel shutter spring
- ⑧ Adjusting screw ring nut
- ⑨ Nickel-plated brass wall ring nut
- ⑩ Technopolymer release bushing
- ⑪ Technopolymer stop bushing
- ⑫ Stainless steel crimping spring
- ⑬ Technopolymer spring ring
- ⑭ NBR gasket
- ⑮ Nickel-plated brass rotating ring



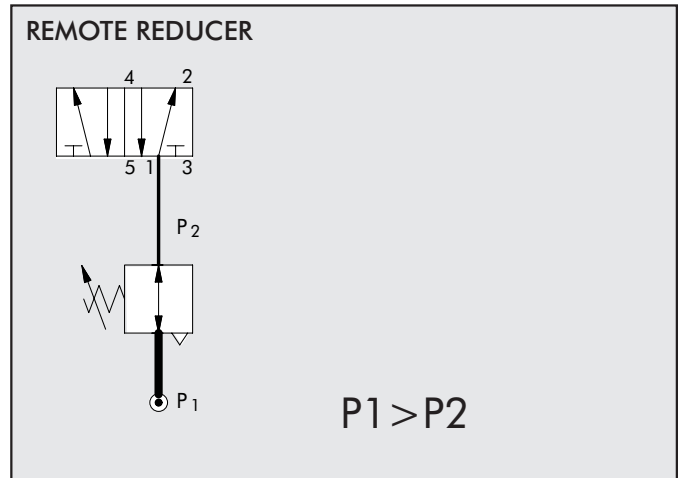
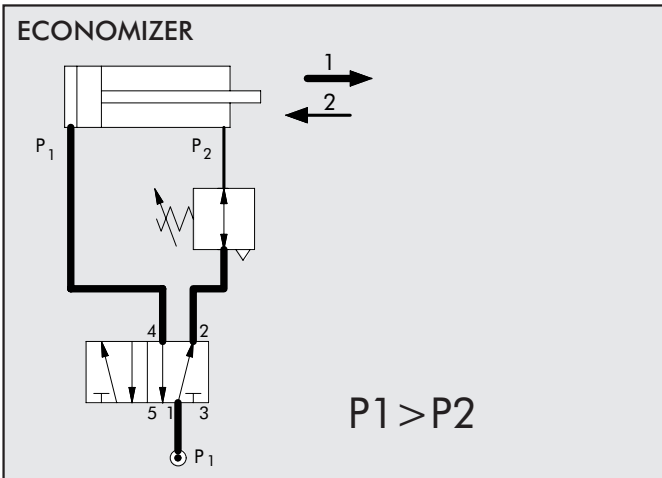
ASSEMBLY OPTION



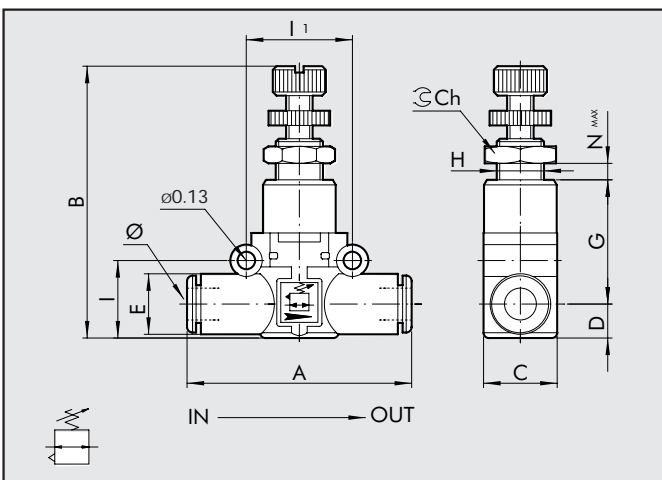
How to assembly RML

- Fig. A: Adding a RU6 fitting, with his male NPT thread, it is possible to mount the RML straight on to the actuator or the control valve.
- Fig. B: By using the ring nut screwed on the threaded body it's possible the assembling on panels
- Fig C: On the plastic body there are two strong ring for the direct wall assembly
- Fig. D: Fixing on plate trough the proper small square SQU L

POSSIBLE APPLICATIONS



LINE-MOUNTED MINIATURE REDUCER, SERIES RML



Code	Ref.	Ø	A	B	C	D	E
------	------	---	---	---	---	---	---

9061316U	RML 1/4-1/4	1/4	1.85	1.81-2.05	0.58	0.25	0.45
9061324	RML 5/16-5/16	5/16	2.18	2.05-2.28	0.74	0.36	0.54

G	H	I	I1	Ch	Nmax
---	---	---	----	----	------

0.98	M9x0.75	0.57	0.79	0.43	0.18
1.08	M11x1	0.74	0.94	0.51	0.15

IN-LINE QUICK-EXHAUST VALVES

Series VSR L



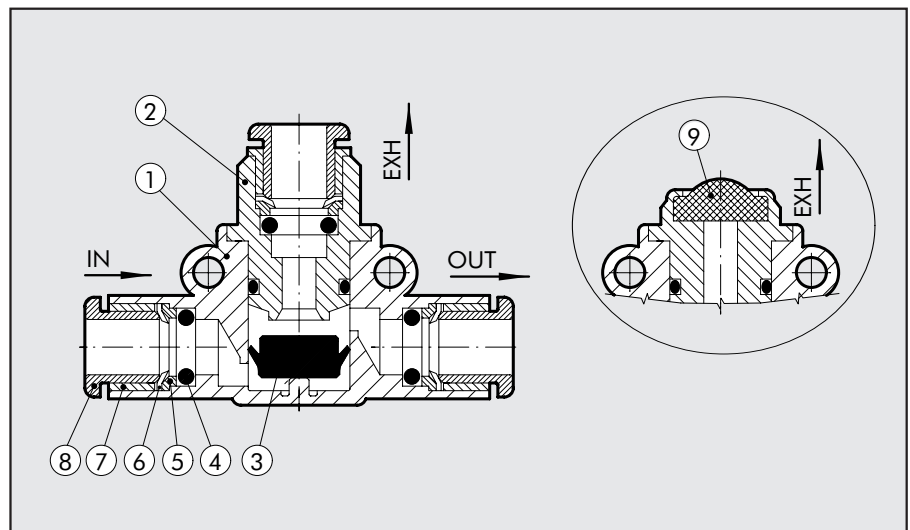
The VSR L quick-exhaust valve belongs to the LINE ON LINE® family, which means it can be connected to all the other components in series or in parallel. Available in the version for pipe-pipe connection with two FOX push-in fittings. Exhaust can be silenced using a STAINLESS steel wire silencer, or conveyed using a FOX push-in fitting.



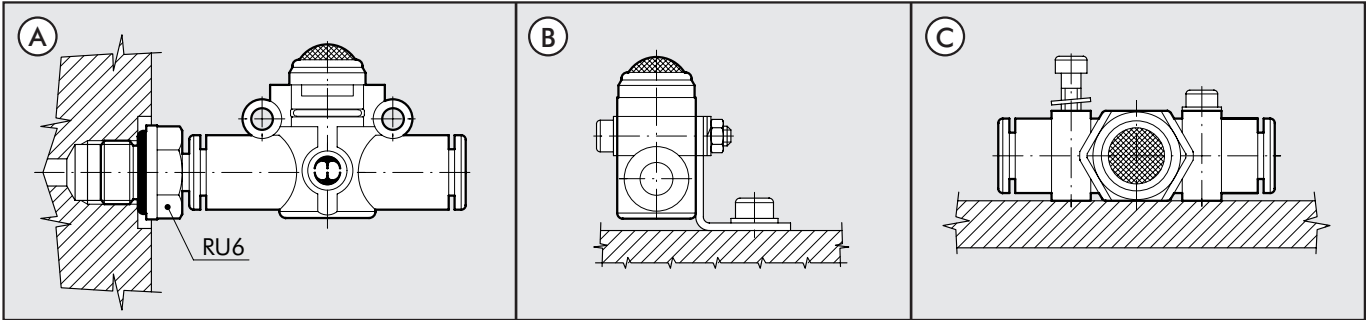
TECHNICAL DATA		Ø 1/4	Ø 5/16
Operating pressure	psi	7 ÷ 150	
Temperature range	°C	-20 to +60	
	°F	-4 to +140	
Inlet Flow rate at 90 psi ΔP 14.5 psi	NI/min	270	400
Exhaust Flow rate at 90 psi	NI/min	700	1000
Recommended pipe		Rilsan PA 11 – Nylon 6 – Polyamide 12 – Polypropylene	
Fluid		lubricated or unlubricated filtered compressed air; if used, must be continuous	

COMPONENT PARTS

- ① Technopolymer body
- ② Nickel-plated brass insert
- ③ NBR valve
- ④ NBR gasket
- ⑤ Technopolymer spring ring
- ⑥ Stainless steel folding spring
- ⑦ Brass or technopolymer locking bushing
- ⑧ Technopolymer release bushing
- ⑨ Stainless steel wire silencer



ASSEMBLY OPTIONS

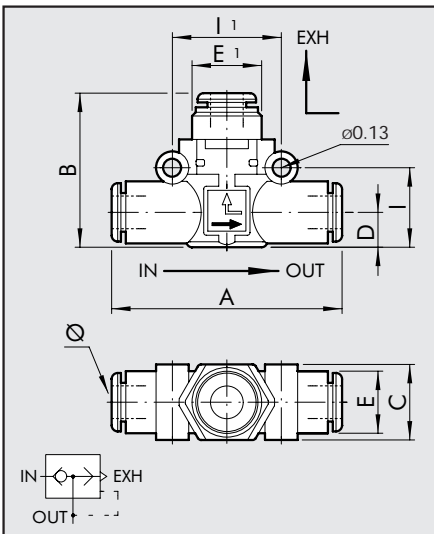


How to mount the VSR L:

- Fig. A: Adding a RU6 fitting, with his male NPT thread, it is possible to mount the VSR L straight on to the actuator or the control valve.
- Fig. B: Fixing to the plate with the special SQU L bracket.
- Fig. C: There are two robust rings on the plastic body for fixing the RFL R straight onto the wall.

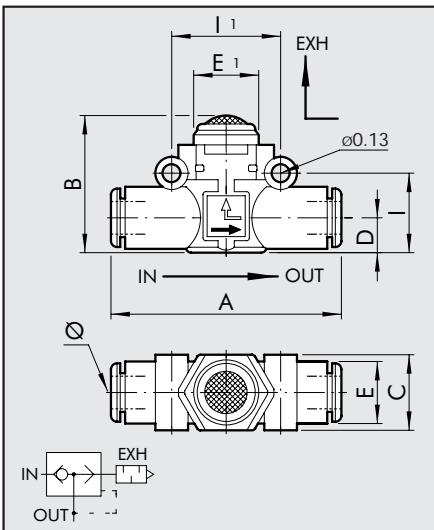
OVERALL DIMENSIONS AND ORDERING CODES

VSR L PIPE-PIPE, CONVEYED EXHAUST



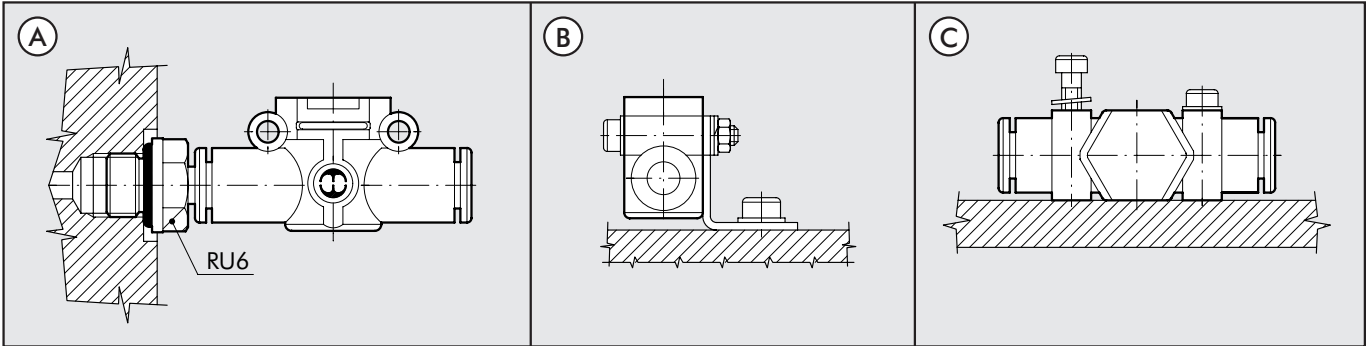
Code	Ref.	Ø	A	B	C	D	E	E1	I	I1
9063016U	VSR L 1/4-1/4-1/4	1/4	1.85	1.14	0.58	0.25	0.45	0.51	0.57	0.79
9063024	VSR L 5/16-5/16-5/16	5/16	2.18	1.37	0.74	0.36	0.54	0.59	0.74	0.94

VSR L PIPE-PIPE, SILENCED EXHAUST



Code	Ref.	Ø	A	B	C	D	E	E1	I	I1
9063116U	VSR L 1/4-1/4-SIL	1/4	1.85	1	0.58	0.25	0.45	0.51	0.57	0.79
9063124	VSR L 5/16-5/16-SIL	5/16	2.18	1.24	0.74	0.36	0.54	0.71	0.74	0.94

ASSEMBLY OPTIONS

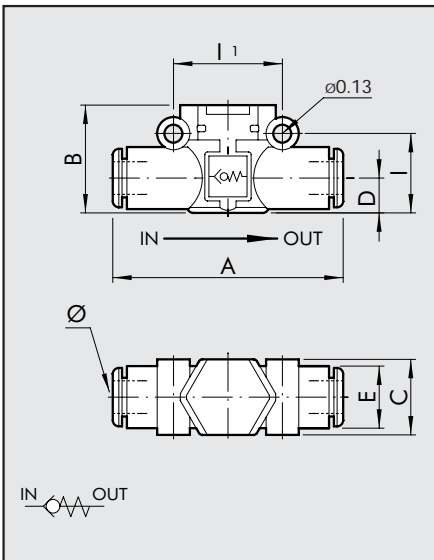


How to mount the VNR L:

- Fig. A: Adding a RU6 fitting, with his male NPT thread, it is possible to mount the VNR L straight on to the actuator or the control valve.
- Fig. B: Fixing to the plate with the special SQU L bracket.
- Fig. C: There are two robust rings on the plastic body for fixing the VNR L straight onto the wall.

OVERALL DIMENSIONS AND ORDERING CODES

VNR L PIPE-PIPE	Code	Ref.	Ø	A	B	C	D	E	I	I1
-----------------	------	------	---	---	---	---	---	---	---	----



9064016U	VNR L 1/4-1/4	1/4	1.85	0.79	0.58	0.25	0.45	0.57	0.79
9064024	VNR L 5/16-5/16	5/16	2.18	1	0.74	0.36	0.54	0.73	0.94

NOTES

IN-LINE SHUTOFF VALVE

Series "V2V L" and "V3V L"



V2V L and V3V L shutoff valves belong to the LINE ON LINE® family which means they can be connected to all the other components in series or in parallel.

Available in the version for pipe-pipe connection with two FOX push-in fittings.

V2V is a two-way unidirectional valve, while V3V is a three-way valve with free discharge in the area around the control knob.

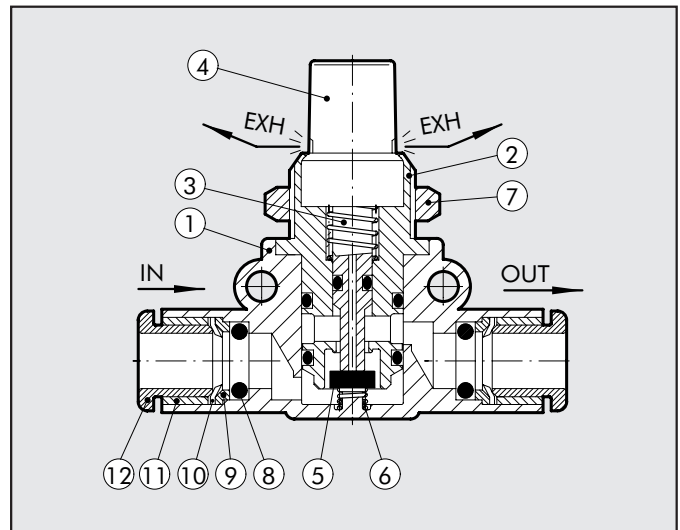
The locked version is probably the smallest available on the market. A lock is provided to ensure the valve is kept in the closed position during machine maintenance. The valve is supplied complete with a lock and two keys.



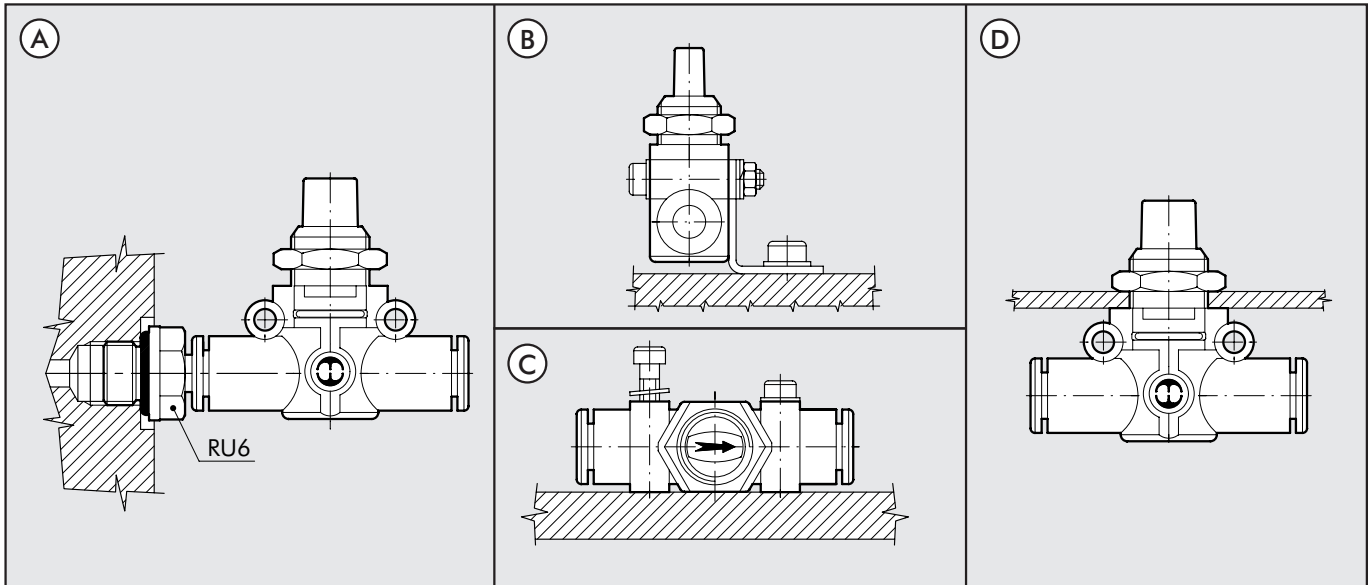
TECHNICAL DATA		Ø 1/4	Ø 5/16
Operating pressure	psi	0 ÷ 150	
Temperature range	°C	-20 to +60	
	°F	-4 to +140	
Inlet Flow rate at 90 psi ΔP 14.5 psi	NI/min	280	470
Exhaust Flow rate 90 psi	NI/min	110	110
Recommended pipe		Rilsan PA 11 – Nylon 6 – Polyamide 12 – Polypropylene	
Fluid		lubricated or unlubricated filtered compressed air; if used, must be continuous	

COMPONENT PARTS

- ① Technopolymer body
- ② Nickel-plated brass insert
- ③ Brass rod
- ④ Technopolymer knob
- ⑤ NBR valve
- ⑥ Stainless steel valve compression spring
- ⑦ Nickel-plated brass wall-mount ring nut
- ⑧ NBR gasket
- ⑨ Technopolymer spring ring
- ⑩ Stainless steel folding spring
- ⑪ Technopolymer locking bushing
- ⑫ Technopolymer release bushing



ASSEMBLY OPTIONS

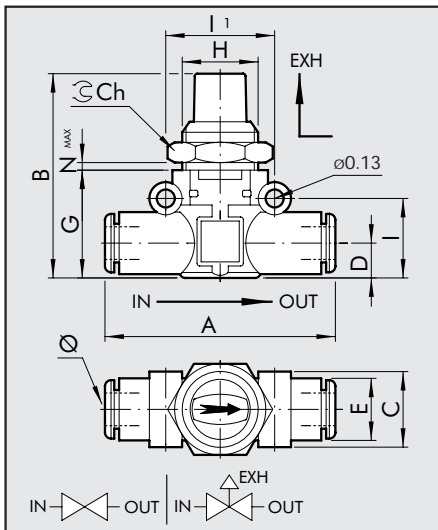


How to mount the V2V/V3V L:

- Fig. A: Adding a RU6 fitting, with his male NPT thread, it is possible to mount the V2V/V3V L straight on to the actuator or the control valve.
- Fig. B: Fixing to the plate with the special SQU L bracket.
- Fig. C: There are two robust rings on the plastic body for fixing the V2V/V3V L straight onto the wall.
- Fig. D: the rig nut is screwed onto the threaded metal part of the V2V/V3V L body for panel mounting.

OVERALL DIMENSIONS AND ORDERING CODES

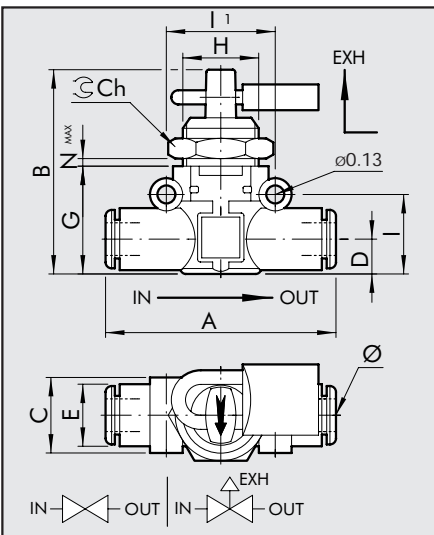
V2V/V3V L PIPE-PIPE	Code	Ref.	Ø	A	B	C	D	E
	9065016U	V2V L 1/4-1/4	1/4	1.85	1.61	0.58	0.25	0.45
	9066016U	V3V L 1/4-1/4						
	9065024	V2V L 5/16-5/16	5/16	2.18	1.81	0.74	0.36	0.54
	9066024	V3V L 5/16-5/16						
	G	H	I	Il	Ch	Nmax		
	0.83	M15x1	0.57	0.79	0.67	0.22		
	1.02	M15x1	0.74	0.94	0.67	0.22		





**V2V/V3V L PIPE-PIPE
PADLOCKED**

Code	Ref.	Ø	A	B	C	D	E
------	------	---	---	---	---	---	---



9065116U	V2V L 1/4-1/4 KEY	1/4	1.85	1.61	0.58	0.25	0.45
9066116U	V3V L 1/4-1/4 KEY						
9065124	V2V L 5/16-5/16 KEY	5/16	2.18	1.81	0.74	0.36	0.54
9066124	V3V L 5/16-5/16 KEY						

G	H	I	I1	Ch	Nmax
---	---	---	----	----	------

0.83	M15x1	0.57	0.79	0.67	0.22
------	-------	------	------	------	------

1.02	M15x1	0.74	0.94	0.67	0.22
------	-------	------	------	------	------

NOTES

IN-LINE PRESSURE GAUGE Series MAN L

The MAN L pressure gauge belongs to the LINE ON LINE® family, which means it can be connected to all the other components in series or in parallel.

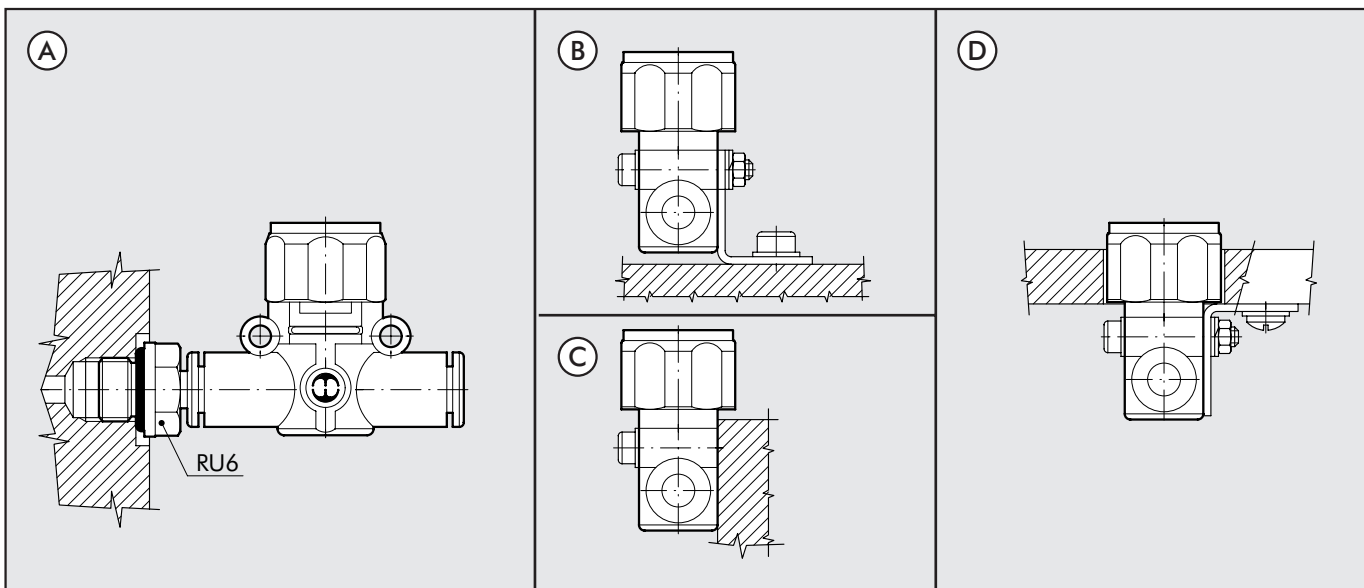
Available in the version for pipe-pipe connection with two FOX push-in fittings.

Though small in size, this pressure gauge, which is supplied in a metal casing, ensures accurate reading. It can be angled in any direction simply by rotating manually.



TECHNICAL DATA		Ø 1/4	Ø 5/16
Max. inlet pressure	psi		0 ÷ 170
Temperature range	°C		-20 to +60
	°F		-4 to +140
Precision			±4% full scale
Recommended pipe		Rilsan PA 11 – Nylon 6 – Polyamide 12 – Polypropylene	
Fluid		lubricated or unlubricated filtered compressed air	

ASSEMBLY OPTIONS



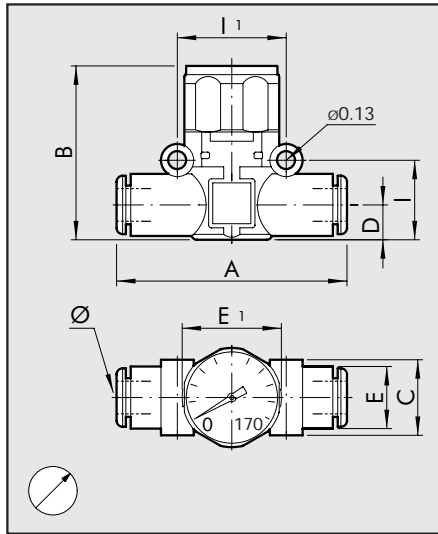
How to mount the MAN L:

- Fig. A: Adding a RU6 fitting, with his male NPT thread, it is possible to mount the MAL L straight on to the actuator or the control valve.
- Fig. B: Fixing to the plate with the special SQU L bracket.
- Fig. C: There are two robust rings on the plastic body for fixing the MAN L straight onto the wall.
- Fig. D: Use the SQL L bracket for panel mounting the MAN L.



OVERALL DIMENSIONS AND ORDERING CODES

MAN L PIPE-PIPE	Code	Ref.	Ø	A	B	C	D	E	E1	I	I1
-----------------	------	------	---	---	---	---	---	---	----	---	----



9067016U	MAN L 1/4-1/4	1/4	1.85	1.38	0.58	0.25	0.45	0.9	0.57	0.79
9067024	MAN L 5/16-5/16	5/16	2.18	1.61	0.74	0.36	0.54	0.9	0.74	0.94

NOTES

IN-LINE PRESSURE INDICATOR Series LAM L

The LAM L pneumatic light indicator belongs to the LINE ON LINE® family, which means it can be connected to all the other components in series or in parallel.

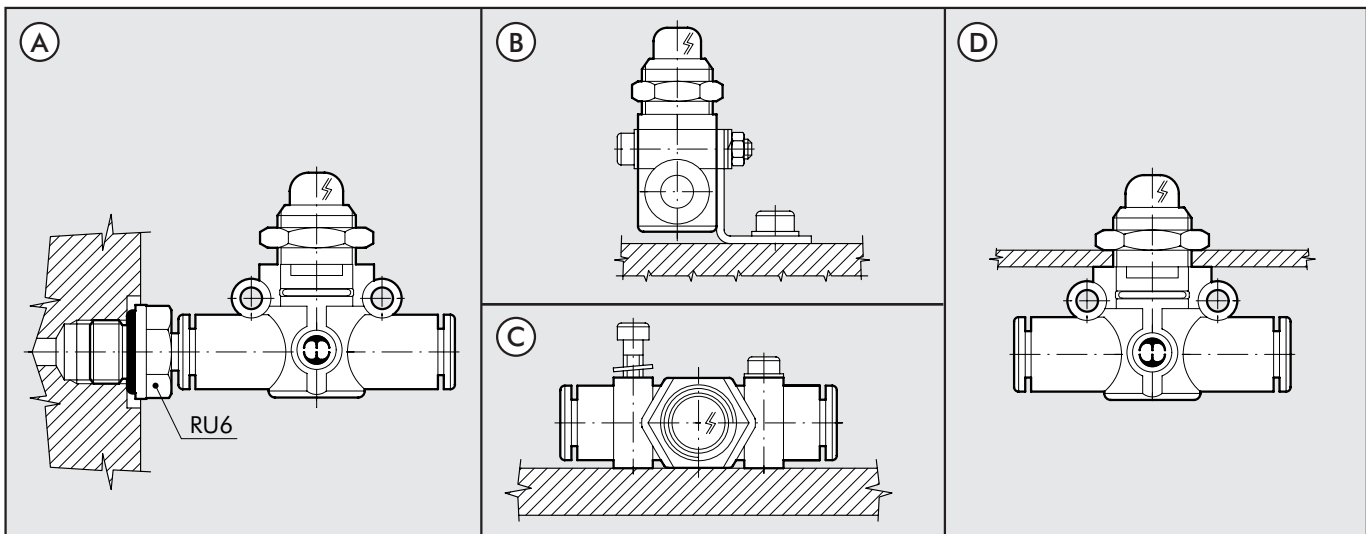
Available in the version for pipe-pipe connection with two FOX push-in fittings.

When there is no pressure, the clear technopolymer bell looks empty. When there is pressure, a red signal appears. The clear bell can be cleaned using normal detergents or ethyl alcohol, as the technopolymer used is fully compatible.



TECHNICAL DATA		Ø 1/4	Ø 5/16
Max. inlet pressure	psi		30 ÷ 150
Temperature range	°C		-20 to +60
	°F		-4 to +140
Colour with pressure			orange - green
Recommended pipe			Rilsan PA 11 – Nylon 6 – Polyamide 12 – Polypropylene
Fluid			lubricated or unlubricated filtered compressed air; if used, must be continuous

ASSEMBLY OPTIONS



How to mount the LAM L:

- Fig. A: Adding a RU6 fitting, with his male NPT thread, it is possible to mount the LAM L straight on to the actuator or the control valve.
- Fig. B: Fixing to the plate with the special SQU L bracket.
- Fig. C: There are two robust rings on the plastic body for fixing the LAM L straight onto the wall.
- Fig. D: The ring nut is screwed onto the threaded metal part of the LAM L body for panel mounting.



OVERALL DIMENSIONS AND ORDERING CODES

LAM L PIPE-PIPE		Code	Ref.	Ø	A	B	C	D	E	E1	
	9068016U	LAML 1/4-1/4-A	1/4	1.85	1.46	0.58	0.25	0.45	0.42		
	9068216U	LAML 1/4-1/4-V									
	9068024	LAML 5/16-5/16-A	5/16	2.18	1.61	0.74	0.36	0.54	0.42		
	9068224	LAML 5/16-5/16-V									
		G	H	I	I1	Ch	Nmax				
		0.83	M15x1	0.57	0.79	0.67	0.18				
		1.02	M15x1	0.74	0.94	0.67	0.18				
		A = ORANGE V = GREEN									

NOTES

IN-LINE SOLENOID VALVE Series SOV L

SOV L solenoid valves belong to the LINE ON LINE® family, which means they can be connected to all the other components in series or in parallel.

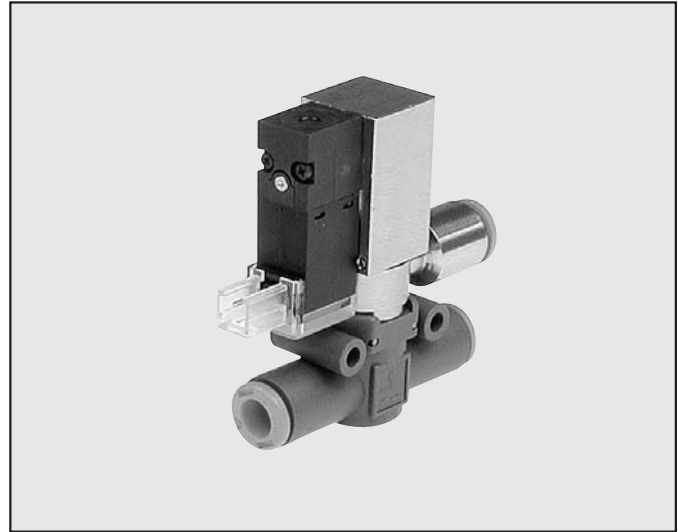
Available in the version for pipe-pipe connection with two FOX push-in fittings.

Though small in size, SOV L valves are solenoid-piloted and feature very high performance.

The spool distributor is fitted with special polyurethane gaskets to ensure a very long working life.

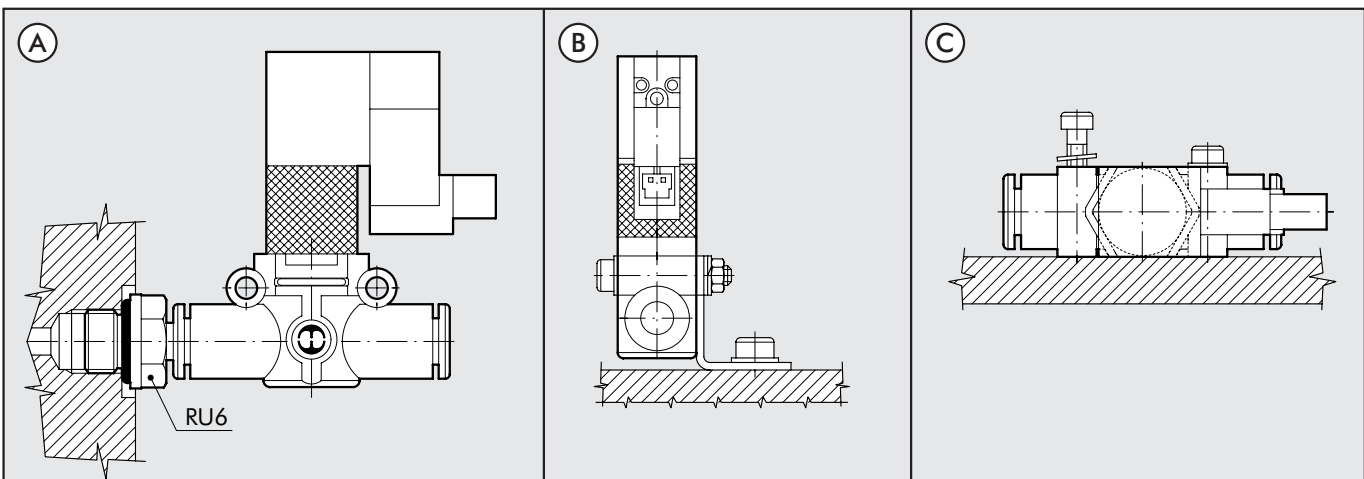
Each valve comes complete with a monostable manual control and LED.

Exhaust can be damped with an annular silencer.



TECHNICAL DATA		Ø 1/4	Ø 5/16
Max. inlet pressure	psi	30 ÷ 100	
Temperature range	°C	-10 to +60	
	°F	+14 to +140	
Flow rate at 90 psi ΔP 7.2 psi	NI/min	270	500
Flow rate at 90 psi ΔP 14.5 psi	NI/min	380	700
Conductance C	NI/min*bar	95.8	178.1
Coefficient b	bar/bar	0.145	0.129
Voltage	VDC	24	
Power	W	1.2	
Recommended pipe		Rilsan PA 11 – Nylon 6 – Polyamide 12 – Polypropylene	
Fluid		lubricated or unlubricated filtered compressed air; if used, must be continuous	

ASSEMBLY OPTIONS



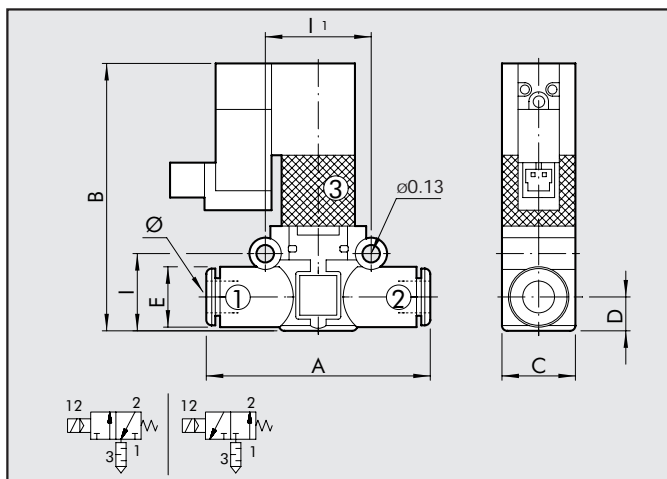
How to mount the SOV L:

- Fig. A: Adding a RU6 fitting, with his male NPT thread, it is possible to mount the SOV L straight on to the actuator or the control valve.
- Fig. B: Fixing to the plate with the special SQU L bracket.
- Fig. C: There are two robust rings on the plastic body for fixing the SOV L straight onto the wall.



OVERALL DIMENSIONS AND ORDERING CODES

SOV L 3/2 NC-NO PIPE-PIPE SILENCED EXHAUST



Code	Ref.	Ø	A	B	C
------	------	---	---	---	---

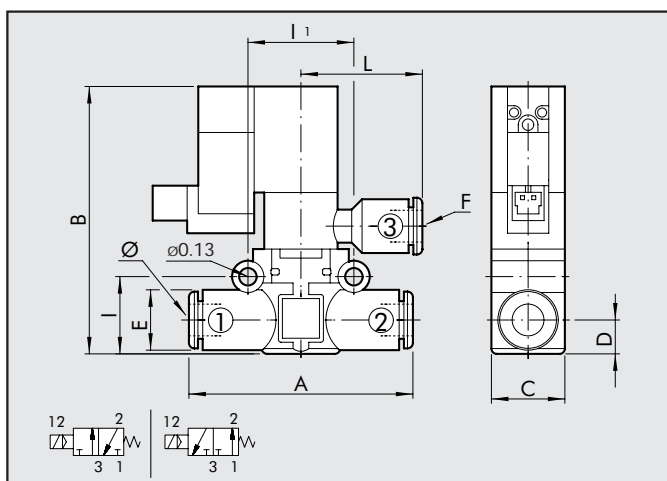
9069016U	SOV L 3/2 NC 1/4-1/4	1/4	1.85	2.18	0.58
9069116U	SOV L 3/2 NO 1/4-1/4				
9069024	SOV L 3/2 NC 5/16-5/16	5/16	2.18	2.5	0.74
9069124	SOV L 3/2 NO 5/16-5/16				

D	E	I	I1
---	---	---	----

0.25	0.45	0.57	0.79
------	------	------	------

0.36	0.54	0.74	0.94
------	------	------	------

SOV L 3/2 NC-NO PIPE-PIPE CONVEYED EXHAUST



Code	Ref.	Ø	A	B	C	D
------	------	---	---	---	---	---

9069216U	SOV L 3/2 NC 1/4-1/4-1/4	1/4	1.85	2.18	0.58	0.25
9069316U	SOV L 3/2 NO 1/4-1/4-1/4					
9069224	SOV L 3/2 NC 5/16-5/16-5/16	5/16	2.18	2.5	0.74	0.36
9069324	SOV L 3/2 NO 5/16-5/16-5/16					

E	F	I	I1	L
---	---	---	----	---

0.45	Ø1/4	0.57	0.79	1.06
------	------	------	------	------

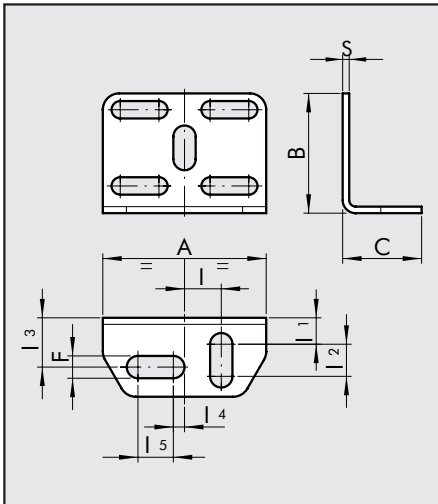
0.54	Ø5/16	0.74	0.94	1.18
------	-------	------	------	------

NOTES



FIXING SQUARE KIT

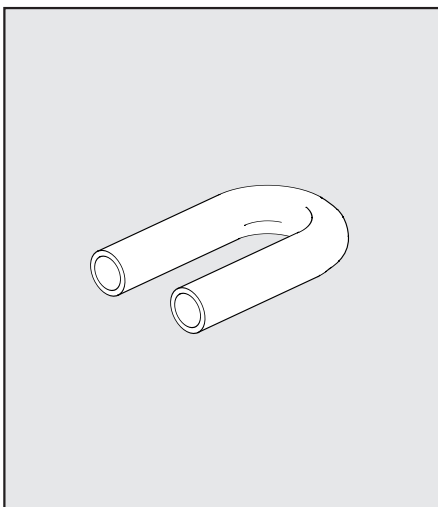
Code	Description	A	B	C	F	I	I1	I2	I3	I4	I5	S
9062110	SQU L	1.18	0.87	0.57	0.16	0.27	0.19	0.23	0.36	0.08	0.25	0.05



NOTE: comes with two m3x16 screws (for L.O.L. Ø 6 - 8), two m3 hexagonal nuts, 2 groovers, 4 washers.

U-BOLT

Code	Description
------	-------------



- 9062216U TUB L 1/4-1/4
- 9062224 TUB L 5/16-5/16

RU6 - STEM ADAPTORS

MW Part. No.	Ref.	ø	F	Ch		P	L	D	E
				Inc	mm				
2U06001	RU6	5/32	10/32 UNF	5/16	8	0,16	0,99	0,08	0,35
2U06002	RU6	5/32	1/8 NPT	0,472	12	0,24	1,09	0,10	0,51
2U06003	RU6	5/32	1/4 NPT	0,551	14	0,31	1,19	0,10	0,65
2U06000	RU6	1/4	10/32 UNF	5/16	8	0,16	1,01	0,08	0,35
2U06007	RU6	1/4	1/8 NPT	0,472	12	0,24	1,11	0,16	0,51
2U06008	RU6	1/4	1/4 NPT	0,551	14	0,31	1,20	0,16	0,65
2U06020	RU6	1/4	3/8 NPT	0,669	17	0,35	1,31	0,16	0,79
2U06009	RU6	5/16	1/8 NPT	0,472	12	0,24	1,15	0,22	0,51
2U06010	RU6	5/16	1/4 NPT	0,551	14	0,31	1,24	0,24	0,65
2U06011	RU6	5/16	3/8 NPT	0,669	17	0,35	1,35	0,24	0,79

