

**PATENTED**

**Xmitr™ Transmitter Gauge**  
**Type X1005 2"**  
**Type X2001 2½", 3½"**

Control & Power, Inc. - 1.877.835.5274 - www.controlandpower.com

**TRANSMITTER SPECIFICATIONS**

**Output (Supply):**  
 4-20mA 2 wire (12 to 30 Vdc Supply)  
 1-5 Vdc 3 wire Regulated (10 to 24 Vdc Supply)  
 0.5-4.5 Vdc 3 wire Ratio-metric (5 Vdc ±5% Supply)  
**Ranges:** Vacuum to 5,000 psi (see table 3)  
**Performance:**<sup>(1)</sup>  
 ±1% FSO from best fit straight line (includes non-linearity, hysteresis, and non-repeatability)  
**Temperature:**  
 Storage: -40 to 221°F (-40 to 105°C)<sup>(5)</sup>  
 Operating: -40 to 221°F (-40 to 105°C)<sup>(5)</sup>  
 Compensated: -4 to 185°F (-20 to 85°C)  
 Thermal effect: 1.4% per 100°F, 3%/100°C typical (zero & full scale combined)

**CE Conformity:**  
 Meets CE heavy industrial per EN61326: 1998 Annex A

**Enclosure:** Stainless steel case  
 Type 1005: IP54  
 Type 2001: IP43 (std), IP54 (XLJ)<sup>(2)</sup>

**Media:** Liquid, gas or vapor

**Wetted Materials:** Bronze/brass

**Electrical Protection:**  
 Reverse polarity 75 Vdc, Over-voltage 60 Vdc continuous, and short-circuit protection.<sup>(3)</sup>

**Shock:** 100g-force per IEC770.

**Vibration:** 5g's 50 to 2000Hz.

**Humidity:** 95% non-condensing

**Proof Pressure:**  
 0 to 200 psi = 150% of full scale  
 300 to 5,000 psi = 120%

**Burst Pressure:**  
 0 to 200 psi = 10x burst  
 300 to 5,000 psi = 3x

**Response Time:** Less than 10 ms (electronics)

**Wake-up Time:** 1 ms  
 Insulation: 1 meg ohm at 200 Vdc  
 Electrical Connection:  
 2" shielded cable

Mini-Hirschmann series G  
 Process Connection: Lower

Process Connection:  
 ½ NPT, ¼ NPT, G ¼

**GAUGE SPECIFICATIONS**

**Dial Size:** Type 1005 - 2", Type 2001 2½", 3½"

**Gauge Accuracy:** 3/2/3% full-scale Grade B (1% electric output)

**Window:** Polycarbonate

**Case:** Stainless Steel

**Gauge Movement:**  
 Patented PowerFlex™ movement

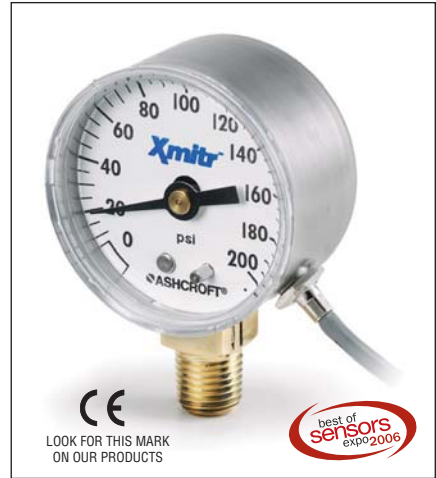
**HOW TO ORDER**

25 X 2001 HD 02L 4 FL X(LJ) 100 psi

- Dial Size 2.5" \_\_\_\_\_
- Patented Xmitr Transmitter Gauge \_\_\_\_\_
- Case Number: 2001 (Table 5) \_\_\_\_\_
- Socket Material: Brass \_\_\_\_\_
- Connection Size/Location: ¼ NPT Lower \_\_\_\_\_
- Output: 4-20mA output (Table 4) \_\_\_\_\_
- Connector: 2" Shielded Cable (Table 2) \_\_\_\_\_
- Select Option(s): IP54 (Table 1) \_\_\_\_\_
- Range: 100 psi (Table 3) \_\_\_\_\_

**Features**

- A transducer and gauge in one instrument (2 in 1)
- A 1% performance general purpose transducer
- Custom OEM configurations
- Voltage and 4-20mA outputs
- Robust CE heavy industrial
- Ranges vac. to 5000 psi
- Vibration dampening via exclusive FlutterGuard™
- Save time, money, space



**OPTIONS (Table 1)**

**Throttle plugs:** (not provided with LJ)  
**(T5):** .013" (standard on 1000 psi and above)  
**(T7):** .020"  
**(T4):** .007" (for clean gas)  
**IP54 (LJ):** For Type X2001. Not fillable. Type X2001 is standard with no O-ring as IP43.  
**(SF):** FlutterGuard™ vibration dampening

**ELECTRICAL CONNECTORS (Table 2)**

Shielded Cable CODE  
 2" shielded cable..... FL  
 Mini-Hirschmann G Series  
 No Mating Connection..... HM  
 With Mate (with 1 meter cable)..... M2  
 With Mate (no cable)..... M1  
 With Mate (with 3 meter cable)..... M3

**Table 4**

Output	Code	Wiring
4-20 mA	4	Red = Supply + Black = Supply -
1-5 Vdc	1	Red = Supply + Black = Supply - (Signal Ref.)
.5-4.5 Vdc Ratiometric	R	White = Signal

**PRESSURE RANGES<sup>(4)</sup> (Table 3)**

psi	kg/cm <sup>2</sup> (4)	bar (4)	kPa (4)	mPa (4)
0/30	2	2	200	0.2
0/60	4	4	400	0.4
0/100	7	7	700	0.7
0/160	10	10	1,000	1
0/200	14	14	1,500	1.5
0/300	21	21	2,000	2
0/400	28	28	3,000	3
0/600	42	42	4,000	4
0/1000 <sup>(6)</sup>	70	70	7,000	7
0/2000 <sup>(6)</sup>	140	140	15,000	15
0/3000 <sup>(6)</sup>	210	210	20,000	20
0/5000 <sup>(6)</sup>	350	350	35,000	35

**COMPOUND RANGES**

30/0/IMV <sup>(6)</sup>	-1, 0	-1, 0	-100, 0	-1, 0
30IMV&15	-1, 1	-1, 1	-100, 100	-1, .1
30IMV&30	-1, 2	-1, 2	-100, 200	-1, .2
30IMV&60	-1, 4	-1, 4	-100, 400	-1, .4
30IMV&100	-1, 7	-1, 7	-100, 700	-1, .7
30IMV&150	-1, 10	-1, 10	-100, 1000	-1, 1.0
30IMV&300	-1, 20	-1, 20	-100, 2000	-1, 2.0
30IMV&400	-1, 27	-1, 27	-100, 2700	-1, 2.7
30IMV&600	-1, 39	-1, 39	-100, 3900	-1, 3.9

- 1% BFSL from 10% to 90% full scale, 1.5% from 0% to 10% and 90% to 100% full scale
- Type 2001 provides case to socket O-ring to seal case for IP54 (not fillable). Other IP ratings upon request.
- For ratio-metric output, reverse polarity 20 Vdc and over-voltage of 25 Vdc continuous.
- 10 piece minimum per line item.
- Cable rated to 105°C. Other connectors to 90°C.
- Vacuum and ranges above 600 psig contact factory for availability.

**Table 5**

Dial Size	Code	Type
2"	20	1005
2.5"	25	2001
3.5"	35	2001

Consult factory for guidance in product selection  
 Phone (203) 385-0217, Fax (203) 385-0602 or  
 visit our web site at www.ashcroft.com



**Commercial Pressure Gauge  
Type 1005, ASME B 40.1  
Grade B (±3-2-3% of span)**

Control & Power, Inc. - 1.877.835.5274 - www.controlandpower.com

- Case material is black-painted steel
- These gauges have a heat-resistant push-in polycarbonate window
- Dial faces match other Ashcroft® commercial gauges for easy readability
- Patented PowerFlex™ movement with polyester segment
- True Zero™ indication, a unique safety feature

Ashcroft® Type 1005 gauges are available in 1½" through 3½" dial sizes. The full-view polycarbonate push-in window allows for better dial visibility. These gauges are commonly used on compressors, filter regulators, water pumps, beverage-dispensing equipment, paint sprayers and a variety of other applications.

Ashcroft Type 1005 gauges have the patented PowerFlex movement with polyester segment for increased resistance to rough usage, for a more durable, longer-lasting gauge.

True Zero indication reduces the potential risk of installing a damaged gauge on your equipment.

FlutterGuard™ can be added



to Type 1005 gauges to eliminate pointer flutter and extend gauge life.

**GAUGE SPECIFICATIONS**

<b>Type no.:</b>	1005	<b>Connection:</b>	¼ NPT lower, ¼ NPT back ¼ NPT lower, ¼ NPT back (1½" back connection available in ¼ NPT only)
<b>Accuracy:</b>	ASME B 40.1 Grade B (±3-2-3% of span)	<b>Ranges:</b>	Vac.-6000 psi and compound (1000-6000 psi available in 2" and 2½" lower and back connection, ¼ NPT only. 1½" available in vac.-300 psi only)
<b>Size:</b>	1½", 2", 2½", 3½"	<b>Operating temperature:</b>	-40°F to 150°F
<b>Case:</b>	Black-painted steel	<b>Note:</b>	4½" gauges are available as Type 1000 with black friction-fit ring and glass window. Refer to Bulletin CG-10/21
<b>Ring:</b>	None		
<b>Window:</b>	Polycarbonate push-in		
<b>Dial:</b>	Black figures on white background		
<b>Pointer:</b>	Black, aluminum		
<b>Bourdon tube:</b>	"C" shaped bronze (Vac.-600 psi and compound) Helical bronze (1000-6000 psi)		
<b>Movement:</b>	Patented PowerFlex with polyester segment		
<b>Socket:</b>	Brass		
<b>Restrictor:</b>	0.013" orifice throttle plug in gauges 1000 psi and above		

**GAUGE OPTIONS**

<b>Case:</b>	Factory variation code in ( ) Case color other than black Vent hole (VH)
<b>Pointer:</b>	Adjustable (AP)
<b>Socket:</b>	Nickel plated brass (NP) Nonstandard length or thread Throttle plugs, 0.007", 0.013", 0.020", 0.063" orifices Teflon taped threads (TC)
<b>Others:</b>	Bulk packaging (ZO) Customized dials Nonstandard ranges and special calibration on application UL 404 and UL 252A listing for compressed gas service for 2" gauges FlutterGuard (SF) Top or side connection: (02D= right side) (02E= left side) (02T= top connection) Receiver ranges: 3/15 psi, 0/10 square root, 0/100% (PR) Clean for oxygen service

**TO ORDER THIS TYPE 1005 GAUGE:**

<b>Select:</b>	20	W	1005	H	01L	X(AP)	100#
1. Dial Size: 2"	_____						
2. Patented PowerFlex™ Movement	_____						
3. Case Type Number: 1005	_____						
4. Socket Material: Brass	_____						
5. Connection Size/Location: ¼ NPT lower	_____						
6. Option: Adjustable Pointer	_____						
7. Range: 100 psi	_____						

Consult factory for guidance in product selection  
Phone (203) 385-0217, Fax (203) 385-0602 or  
visit our web site at [www.ashcroft.com](http://www.ashcroft.com)

- Case material is ABS
- Heat-resistant polycarbonate window
- Excellent for applications where corrosion or impact resistance is a necessity
- Patented PowerFlex™ movement with polyester segment
- True Zero™ indication, a unique safety feature

The Ashcroft® Type 1005P case is made of ABS (Acrylonitrile Butadiene Styrene), which is ideal for rugged applications and harsh environmental conditions. The 1005P gauge has a full-view polycarbonate window for better dial visibility. For applications requiring a high degree of corrosion resistance (where a more expensive stainless steel case is specified), the Type 1005P gauge is ideal.

The PowerFlex movement in these gauges offers superior shock, vibration and pulsation resistance.

True Zero indication reduces the potential risk of installing a damaged gauge on your equipment.

FlutterGuard™ can be added to



Type 1005P gauges to eliminate pointer flutter and extend gauge life.

**GAUGE SPECIFICATIONS**

<b>Type no.:</b>	1005P	<b>Connection:</b>	<b>1½" Gauges</b> ½ NPT lower and back ¼ NPT lower
<b>Accuracy:</b>	ASME B 40.1 Grade B (±3-2-3% of span)		<b>2" Gauges</b> ½ NPT lower and back ¼ NPT lower and back
<b>Size:</b>	1½", 2", 2½", 3½"		<b>2½" and 3½" Gauges</b> ½ NPT lower ¼ NPT lower
<b>Case:</b>	ABS		
<b>Ring:</b>	None		
<b>Window:</b>	Polycarbonate snap-in		
<b>Dial:</b>	Black figures on white background	<b>Ranges:</b>	Vac.-6000 psi and compound (1000-6000 psi available in 2" lower and back, and 2½" lower connection, ¼ NPT only. 1½" available in vac.-300 psi only)
<b>Pointer:</b>	Black, aluminum		
<b>Bourdon tube:</b>	"C" shaped bronze (vac.-600 psi and compound) Helical bronze (1000- 6000 psi)	<b>Operating temperature:</b>	-40°F to 150°F
<b>Movement:</b>	Patented PowerFlex with polyester segment		
<b>Socket:</b>	Brass		
<b>Restrictor:</b>	0.013" orifice throttle plug in gauges 1000 psi and above		

**GAUGE OPTIONS**

	Factory variation code in ( )
<b>Case:</b>	Case color other than black Vent hole (VH)
<b>Pointer:</b>	Adjustable (AP)
<b>Socket:</b>	Nonstandard length or thread Throttle plugs, 0.007", 0.013", 0.020", 0.063" orifices Nickel plated brass (NP) Teflon taped threads (TC)
<b>Others:</b>	Bulk packaging (ZO) Customized dials FlutterGuard (SF) Clean for oxygen service Nonstandard ranges and spe- cial calibration on application Top or side connection: (02D= right side) (02E= left side) (02T= top connection) Receiver ranges: 3/15 psi, 0/10 square root, 0/100% (PR) UL 404 and UL 252A listing for compressed gas service for 2" gauges

**TO ORDER THIS TYPE 1005P GAUGE:**

<b>Select:</b>	<b>20</b>	<b>W</b>	<b>1005</b>	<b>P</b>	<b>H</b>	<b>01B</b>	<b>X(AP)</b>	<b>100#</b>
1. Dial Size: 2" _____								
2. Patented PowerFlex™ Movement _____								
3. Case Type Number: 1005 _____								
4. Case Material: ABS _____								
5. Socket: Brass _____								
6. Connection Size/Location: ½ NPT back _____								
7. Option: Adjustable Pointer _____								
8. Range: 100 psi _____								

Consult factory for guidance in product selection  
Phone (203) 385-0217, Fax (203) 385-0602 or  
visit our web site at www.ashcroft.com

- Case material is stainless steel
- These gauges have a heat-resistant push-in polycarbonate window
- Dial faces match other Ashcroft commercial gauges for easy readability
- Patented PowerFlex™ movement with polyester segment
- True Zero™ indication, a unique safety feature

Ashcroft® Type 1005S gauges are available in 1½" and 2" dial sizes. The full-view polycarbonate push-in window allows for better dial visibility. For added resistance to harsh environmental conditions, the 1005S dial material is aluminum.

Ashcroft Type 1005S gauges use the patented PowerFlex movement with polyester segment, which increases the ability to resist rough usage, thereby helping to lengthen the life of the gauge.

True Zero indication reduces the potential risk of installing a damaged gauge on your equipment.

FlutterGuard™ is available to eliminate pointer flutter and extend gauge life.



**GAUGE SPECIFICATIONS**

<b>Type no.:</b>	1005S	<b>Connection:</b>	½ NPT lower, ¼ NPT back ¼ NPT lower, ¼ NPT back (1½" back connection available in ½ NPT only)
<b>Accuracy:</b>	ASME B 40.1 Grade B (±3-2-3% of span)	<b>Ranges:</b>	Vac.-6000 psi and compound (1½" available in vac.-300 psi only)
<b>Size:</b>	1½", 2"	<b>Operating temperature:</b>	-40°F to 150°F
<b>Case:</b>	Stainless steel		
<b>Ring:</b>	None		
<b>Window:</b>	Polycarbonate push-in		
<b>Dial:</b>	Black figures on white background, aluminum		
<b>Pointer:</b>	Black, aluminum		
<b>Bourdon tube:</b>	"C" shaped bronze (Vac.-600 psi and compound) Helical bronze (1000-6000 psi)		
<b>Movement:</b>	Patented PowerFlex with polyester segment		
<b>Socket:</b>	Brass		
<b>Restrictor:</b>	0.013" orifice throttle plug in gauges 1000 psi and above		

**GAUGE OPTIONS**

	Factory variation code in ( )
<b>Case:</b>	Vent hole (VH)
<b>Pointer:</b>	Adjustable (AP)
<b>Socket:</b>	Nickel plated brass (NP) Nonstandard length or thread Throttle plugs, 0.007", 0.013", 0.020", 0.063" orifices Teflon taped threads (TC)
<b>Others:</b>	Bulk packaging (ZO) Customized dials FlutterGuard (SF) Nonstandard ranges and special calibration on application Top or side connection: (O2D = right side) (O2E = left side) (O2T = top connection) Receiver ranges: 3/15 psi, 0/10 square root, 0/100% (PR) Clean for oxygen service

**TO ORDER THIS TYPE 1005S GAUGE:**

<b>Select:</b>	<b>20</b>	<b>W</b>	<b>1005</b>	<b>S</b>	<b>H</b>	<b>01L</b>	<b>X(AP)</b>	<b>100#</b>
1. Dial Size: 2" _____								
2. Patented PowerFlex™ Movement _____								
3. Case Type Number: 1005 _____								
4. Case Material: Stainless Steel _____								
5. Socket: Brass _____								
6. Connection Size/Location: ½ NPT lower _____								
7. Option: Adjustable Pointer _____								
8. Range: 100 psi _____								

Consult factory for guidance in product selection  
Phone (203) 385-0217, Fax (203) 385-0602 or  
visit our web site at [www.ashcroft.com](http://www.ashcroft.com)

- Enhanced value versus mechanical gauges
- No-nonsense accuracy – ±0.5% full scale accuracy
- Easy-to-read – 4 1/2 digit display with 1/2" character size, optional backlite display feature to enhance visibility
- Versatile – 9 engineering units and stainless steel sensor suitable for a variety of applications
- Standard features – max.-pressure indication; ranges from vacuum to 19,999 psi, including compound
- Competitively priced and can be customized for OEM applications

The Ashcroft® Type D1005PS offers 0.5% of span accuracy, while the stainless steel sensor and socket make this product suitable not only for dry air applications but for other media as well.

This product offers selectable units of measure so rather than purchasing one gauge for each unit of measure required, the solution is one gauge for multiple units of measure.

The D1005PS is standard with many features not offered, or offered only as options, on competitor's digital gauge products, such as peak hold and 4 1/2 digit display. When compared to mechanical gauges the



\*Protective Boot Optional

D1005PS offers overall enhanced value.

**PRODUCT SPECIFICATIONS**

Type no.:	D1005PS
Accuracy:	±0.5% of span
Case Size:	2 1/2"
Case Material:	Noryl®
Wetted Parts:	17-4 PH stainless steel sensor; 316 stainless steel socket
Socket Size:	1/4 NPT
Connection:	Lower
Ranges:	Vac. thru 19,999 psi (see standard ranges for other units of measurement)
Battery:	Two AAA alkaline batteries; approximately 1000 hours battery life
Overpressure:	Vac. 0/3000-0/1000 0/5000 0/19,999
Proof:	200% 150% 120%
Burst:	800% 300% 150%
Cycle Life:	10 <sup>8</sup> cycles 20/80% F.S. with negligible performance loss
Vibration:	Less than ±0.1% F.S. effect for 0/2000 Hz at 20 g's in any axis
Shock:	Less than ±0.05% F.S. effect for 100 g's, 20msec shock in any axis
Operating Temp.:	-10°C to 60°C (14°F to 140°F)
Storage Temp.:	-20°C to 70°C (-4°F to 158°F) (maximum temperature shift is .028% per °F from -20°F to 180°F starting at 68°F. For vacuum and 30 psi ranges the maximum temperature shift is .04%)
Update Rate:	100ms
Agency Approvals:	CE EN 61326 (1998); CE EN 61326 Annex A (heavy industrial)
Packaging:	Individual carton
Opt'l. Features:	±0.25% of span accuracy; backlite; 3, 9, 12 o'clock connections; Alternate socket configurations – upon application; Customized keypad; Protective boot; Bulk packaging

<b>DISPLAY</b>	
Type:	LCD
Display Digits:	1/2

<b>Display Resolution:</b>	<b>Full Scale Numerical Value</b>	<b>Display Resolution</b>
	>= -15 < 0	-XX.000
	> 0 < 2	X.0000
	>= 2 < 20	XX.000
	>= 20 < 200	XXX.00
	>= 200 < 2000	XXXX.0
	>= 2000 < 19,999	XXXXX
<b>Character Height:</b>	0.5"	
<b>Backlight:</b>	OFF by default	
<b>Battery:</b>	Four-level battery indication	

**KEYPAD FUNCTIONS**

<b>On/Off:</b>	Manually turns unit on and off (four options: never, 5, 10 and 20 min.)
<b>Backlite (optional):</b>	Manually turns backlite on and off (four programmable auto on/off options)
<b>Maximum (Peak Hold):</b>	Displays max. value when activated
<b>Zero/Clear:</b>	Zeros display or clears max. value when activated
<b>Engineering Units:</b>	psi, in.Hg, cmHg, mmHg, kPa, MPa, bar, kg/cm <sup>2</sup> , ftH <sub>2</sub> O
<b>Field Calibration:</b>	Zero and span

**STANDARD RANGES**

Vacuum						
in. Hg	kPa	cmHg	Bar	kg/cm <sup>2</sup>	mmHg	
-30/0	-100/0	-76/0	-1/0	-1/0	-760/0	
Compound						
in. Hg/psi	kPa	mPa	Bar	kg/cm <sup>2</sup>	ft H <sub>2</sub> O	
-30/30	-100/200	-	-1/2	-1/2	-35/70	
-30/60	-100/400	-	-1/2	-1/2	-35/140	
-30/100	-100/700	-	-1/2	-1/2	-35/230	
-30/150	-100/1050	-	-1/11	-1/11	-35/350	
-30/300	-100/2100	-	-1/21	-1/21	-35/700	
Pressure						
psi	kPa	mPa	Bar	kg/cm <sup>2</sup>	ft H <sub>2</sub> O	
0/30	0/200	-	0/2	0/2	0/70	
0/60	0/400	-	0/4	0/4	0/140	
0/100	0/700	-	0/7	0/7	0/230	
0/200	0/1400	-	0/14	0/14	0/460	
0/300	0/2100	-	0/21	0/21	0/700	
0/500	0/3500	-	0/35	0/35	-	
0/1000	0/7000	-	0/70	0/70	-	
0/1500	-	0/10	0/105	0/105	-	
0/2000	-	0/14	0/140	0/140	-	
0/3000	-	0/21	0/210	0/210	-	
0/5000	-	0/35	0/350	0/350	-	
0/10,000	-	0/70	0/700	0/700	-	
0/15,000	-	0/100	0/1000	0/1000	-	
0/19,999	-	0/140	0/1400	0/1400	-	

**TO ORDER THIS TYPE D1005PS GAUGE:**

- Select:** \_\_\_\_\_ **25** **D1005PS** **02L** **100#**
1. Dial Size: 2 1/2" \_\_\_\_\_
  2. Case Type Number: D1005PS \_\_\_\_\_
  3. Wetted Parts: Stainless Steel \_\_\_\_\_
  4. Connection: 1/4 NPT lower \_\_\_\_\_
  5. Range: 0/100 psi \_\_\_\_\_

Consult factory for guidance in product selection  
Phone (203) 385-0217, Fax (203) 385-0602 or  
visit our web site at www.ashcroft.com

- Underwriters Laboratory listed and Factory Mutual approved
- Corrosion-resistant ABS case
- Heat-resistant polycarbonate push-in window
- Patented PowerFlex™ movement with polyester segment
- True Zero™ indication, a unique safety feature

Ashcroft® fire protection sprinkler gauges are Underwriters Laboratory listed and Factory Mutual approved for fire protection sprinkler service. The case material on Type 1005P, XUL gauges is ABS. The 0-300 psi pressure range is used on “wet” systems where water is available to the sprinkler heads. The 0-80 retard to 250 psi pressure range is used on dry systems where the lines are filled with air pressure until system activation.

The patented PowerFlex™ movement with polyester segment is designed to provide unequalled shock and vibration resistance resulting in superior performance and extended gauge life.



True Zero™ indication, a standard feature on these gauges, reduces the potential risk of installing a damaged gauge on your equipment.

**GAUGE SPECIFICATIONS**

<b>Type no.:</b>	1005P, XUL	<b>Operating temperature:</b>	-40°F to 150°F
<b>Accuracy:</b>	ASME B 40.1 Grade B (±3-2-3% of span)	<b>Connection:</b>	¼ NPT lower
<b>Size:</b>	3½"	<b>Ranges:</b>	0-300 psi (water) 0-80 retard to 250 psi (air)
<b>Case:</b>	ABS (Polycarbonate blend)		UL 393 Listed, UL of Canada Listed and FM approved.
<b>Ring:</b>	None		Equivalent (single or dual scale) metric scales are available
<b>Window:</b>	Polycarbonate, push-in		
<b>Dial:</b>	Black figures on white background		
<b>Pointer:</b>	Black, aluminum		
<b>Bourdon tube:</b>	“C” shaped bronze		
<b>Movement:</b>	Patented PowerFlex with polyester segment		
<b>Socket:</b>	Brass		
<b>Restrictor:</b>	None		

**GAUGE OPTIONS**

- Customized dials
- Other UL listed ranges on application

**NOTES**



LOOK FOR THESE AGENCY MARKS ON OUR PRODUCTS

**TO ORDER THIS TYPE 1005P, XUL GAUGE:**

Select: \_\_\_\_\_ **35** \_\_\_\_\_ **W** \_\_\_\_\_ **1005** \_\_\_\_\_ **P** \_\_\_\_\_ **H** \_\_\_\_\_ **02L** \_\_\_\_\_ **XUL** \_\_\_\_\_ **300#**

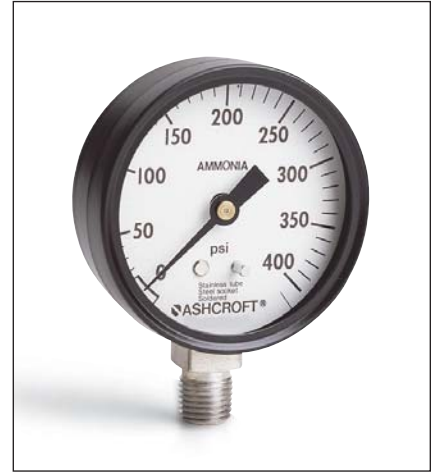
- Dial Size: 3½" \_\_\_\_\_
- Patented PowerFlex™ Movement \_\_\_\_\_
- Case Type Number: 1005 \_\_\_\_\_
- Case Type Material: ABS \_\_\_\_\_
- Socket Material: Brass \_\_\_\_\_
- Connection Size/Location: ¼ NPT lower \_\_\_\_\_
- UL listed, FM approved \_\_\_\_\_
- Range: 300 psi \_\_\_\_\_

Consult factory for guidance in product selection  
Phone (203) 385-0217, Fax (203) 385-0602 or  
visit our web site at www.ashcroft.com

- Available in black-painted steel or stainless clad-aluminum case
- Steel socket, stainless steel bourdon tube
- Soldered tube-to-socket, and tube-to-tip joints
- Patented PowerFlex™ stainless steel movement with polyester segment
- True Zero™ indication, a unique safety feature

The Ashcroft® Type 1005M, XRG agricultural ammonia gauge is designed to withstand rugged agricultural applications. The patented PowerFlex™ movement and state-of-the-art manufacturing processes provide superior gauge performance and extended gauge life. Gauges are tested to ensure leak integrity to 2.8 x 10<sup>-4</sup> cc per second of gas at rated pressure. The glass window eliminates the fogging that occurs when plastic windows are exposed to ammonia.

True Zero™ indication reduces the potential risk of installing a damaged gauge on your equipment.



**GAUGE SPECIFICATIONS**

- Type no.:** 1005M, XRG  
**Accuracy:** ASME B 40.1 Grade B (±3-2-3% of span)  
**Size:** 2½"  
**Case:** Black painted steel  
**Ring:** Black painted steel  
**Window:** Glass  
**Dial:** Black figures on white background  
**Pointer:** Black, aluminum  
**Bourdon tube:** "C" shaped 316 stainless steel  
**Movement:** Patented PowerFlex stainless steel movement with polyester segment  
**Socket:** Steel  
**Restrictor:** None  
**Connection:** ¼ NPT lower  
**Construction:** Soldered tube/socket and tube/tip joints  
**Ranges:** 0/60 psi, 0/150 psi, 0/400 psi  
**Operating temperature:** -40°F to 150°F

**GAUGE OPTIONS**

- Case/Ring:** Stainless clad aluminum (Type 1005M, XSC)  
**Window:** Push-in polycarbonate (exclude XRG or XSC from product code)  
**Socket:** Throttle plug, stainless steel, 0.020" orifice  
**Others:** Bulk packaging (ZO)  
 Special calibration on application  
 Customized dials  
 FlutterGuard™

**TO ORDER THIS TYPE 1005M, XRG GAUGE:**

Select:	25	W	1005	M	02L	XRG	400#
1. Dial Size: 2½"							
2. Patented PowerFlex™ Movement							
3. Case Type Number: 1005							
4. Socket Material: Steel							
5. Connection Size/Location: ¼ NPT lower							
6. Glass window and retaining ring							
7. Range: 400 psi							

Consult factory for guidance in product selection  
 Phone (203) 385-0217, Fax (203) 385-0602 or  
 visit our web site at [www.ashcroft.com](http://www.ashcroft.com)

## Refrigerant Ammonia Gauge Type 1005M, XR5 ASME B 40.1 Grade B (±3-2-3% of span)

- Available in black-painted steel or stainless clad-aluminum case
- Steel socket, stainless steel bourdon tube
- Soldered tube-to-socket, and tube-to-tip joints
- Patented PowerFlex™ stainless steel movement with polyester segment

The Ashcroft® Type 1005M Refrigerant Ammonia Gauge is ideally suited for refrigeration applications. The patented PowerFlex™ movement and state-of-the-art manufacturing processes provide superior gauge performance and extended gauge life. A mass spectrometer leak test ensures leak integrity to  $1 \times 10^{-4}$  cc per second of helium at rated pressure.

FlutterGuard™ is available to eliminate pointer flutter and extend gauge life.



### GAUGE SPECIFICATIONS

<b>Type no.:</b>	1005M, XR5
<b>Accuracy:</b>	ASME B 40.1 Grade B (±3-2-3% of span)
<b>Size:</b>	2½", 3½"
<b>Case:</b>	Black-painted steel
<b>Ring:</b>	None
<b>Window:</b>	Polycarbonate push-in
<b>Dial:</b>	White background, black pressure scale, red temperature scale
<b>Pointer:</b>	Black, aluminum
<b>Bourdon tube:</b>	"C" shaped 316 stainless steel
<b>Movement:</b>	Patented PowerFlex stainless steel with polyester segment
<b>Socket:</b>	Steel
<b>Restrictor:</b>	0.020" orifice throttle plug, stainless steel
<b>Connection:</b>	¼ NPT lower
<b>Construction:</b>	Soldered tube/socket and tube/tip joints
<b>Ranges:</b>	30 in.Hg vac./150 psi, 30 in.Hg vac./300 psi with equivalent ammonia temperature scales
<b>Operating temperature:</b>	-40°F to 150°F

### GAUGE OPTIONS

<b>Case/Ring:</b>	ABS (Type 1005PM) Stainless clad aluminum (Type 1005SM)
<b>Window:</b>	Glass/plastic with black ring Glass/plastic with stainless clad aluminum ring
<b>Others:</b>	Bulk packaging (ZO) Special calibration on application Customized dials FlutterGuard

### TO ORDER THIS TYPE 1005M, XR5 GAUGE:

Select:	25	W	1005	M	02L	XR5	150#/V
1. Dial Size: 2½"	_____	_____	_____	_____	_____	_____	_____
2. Patented PowerFlex™ Movement	_____	_____	_____	_____	_____	_____	_____
3. Case Type Number: 1005	_____	_____	_____	_____	_____	_____	_____
4. Socket Material: Steel	_____	_____	_____	_____	_____	_____	_____
5. Connection Size/Location: ¼ NPT lower	_____	_____	_____	_____	_____	_____	_____
6. Service: Refrigerant, ammonia	_____	_____	_____	_____	_____	_____	_____
7. Range: 30"Hg vac./0/150 psi	_____	_____	_____	_____	_____	_____	_____

Consult factory for guidance in product selection  
Phone (203) 385-0217, Fax (203) 385-0602 or  
visit our web site at [www.ashcroft.com](http://www.ashcroft.com)

- 63mm (2½") and 100mm (4") case sizes
- Soldered brass socket and bronze tube design
- Corrosion-resistant stainless steel case/ring
- Dry, field-fillable or liquid-filled versions
- Patented PowerFlex™ movement
- True Zero™ indication, a unique safety feature
- Two-year warranty on liquid-filled gauges

Ashcroft® Type 1008A gauges are synonymous with durability, flexibility and exceptional quality. The Type 1008A gauge enclosure is sealed to provide maximum protection in adverse environmental conditions. Both 63mm and 100mm Type 1008A gauges are available dry, field-fillable, glycerin filled or silicone filled. Accessory kits are available for panel mounting, front flange mounting or retrofit mounting back connection gauges. The patented PowerFlex™ movement provides a higher level of shock, vibration and pulsation resistance than conventional movement gauges.

The True Zero™ feature helps to assure a quality process and reduces manufacturing and inspection costs.



FlutterGuard™ is available for dry gauges to eliminate pointer flutter and extend gauge life.

**GAUGE SPECIFICATIONS**

<b>Type no.:</b>	1008A/AL
<b>Accuracy:</b>	ASME B 40.1 Grade B (±3-2-3% of span)
<b>Size:</b>	63mm (2½"), 100mm (4")
<b>Case:</b>	304 stainless steel, dry (1008A), or liquid filled (1008AL)
<b>Fill Fluid:</b>	Glycerin
<b>Ring:</b>	304 stainless steel, crimped
<b>Window:</b>	Polycarbonate
<b>Dial:</b>	Black figures on white background, aluminum
<b>Pointer:</b>	Black, aluminum
<b>Bourdon Tube:</b>	"C" shaped bronze (vac.-600 psi and compound) Helical bronze (1000 psi-6000 psi) Helical stainless steel (10,000 psi-15,000 psi)

<b>Movement:</b>	Patented PowerFlex with polyester segment
<b>Socket:</b>	Brass, with O-ring case seal
<b>Restrictor:</b>	Brass throttle plug, 0.013" orifice in all ranges (except vacuum and 15# psi ranges)
<b>Connection:</b>	¼ NPT lower and back
<b>Ranges:</b>	Vac. thru 15,000 psi and compound. Equivalent metric ranges available
<b>Operating Temperature:</b>	Dry gauge: -40°F to 150°F Glycerine filled: 20°F to 150°F

**GAUGE OPTIONS**

<b>Case:</b>	Sealed case, field-fillable (LJ) Silicone filled (GV)
<b>Mounting Hardware:</b>	U-clamp (UC), front flange (FF), retrofit flange (RF)
<b>Socket:</b>	Throttle plugs, 0.007", 0.020", 0.063"
<b>Connections:</b>	JIS, DIN, metric, SAE and other connections on application
<b>Others:</b>	Customized dials Nonstandard ranges FlutterGuard (SF) Special calibration on application Clean for oxygen service – dry gauges only

**TO ORDER THIS TYPE 1008A/AL GAUGE:**

<b>Select:</b>	<b>63</b>	<b>1008</b>	<b>A</b>	<b>L</b>	<b>02B</b>	<b>XUC</b>	<b>1000#</b>
1. Dial Size: 63mm or 100mm _____							
2. Case Type: 1008 _____							
3. Socket Material: Brass _____							
4. Liquid Filled (Glycerin), leave blank if dry _____							
5. Connection Size: ¼ NPT _____							
6. Connection Location: Lower (L), Back (B) _____							
7. Optional Features: XUC = Panel Mounting Kit _____							
8. Range: 1000 psi _____							

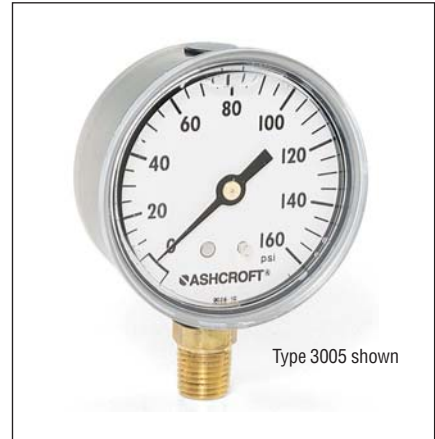
Consult factory for guidance in product selection  
Phone (203) 385-0217, Fax (203) 385-0602 or  
visit our web site at [www.ashcroft.com](http://www.ashcroft.com)

- 304 stainless steel case liquid-filled, dry or field-fillable (Type 3005)
- ABS case, liquid-filled, dry or field-fillable (Type 3005P)
- Patented PowerFlex™ movement with polyester segment
- Pressure ranges from vacuum to 15,000 psi and compound
- Two-year warranty on liquid-filled gauges
- True Zero™ indication, a unique safety feature

Ashcroft® Type 3005 gauges provide superior performance in applications where vibration, pulsation, mechanical shock and pressure spikes are common factors thus making them the ideal choice for hydraulic applications.

These gauges offer a feature only available in Ashcroft gauges – the patented PowerFlex™ movement with polyester segment. This unique movement was designed to provide superior performance in stressful applications, resulting in extended gauge life.

True Zero™ indication, a standard feature on these gauges, reduces the potential risk of installing a damaged gauge on your equipment.



FlutterGuard™ is available for dry gauges to eliminate pointer flutter and extend gauge life.

**GAUGE SPECIFICATIONS**

<b>Type no.:</b>	3005, 3005P
<b>Accuracy:</b>	ASME B 40.1 Grade B (±3-2-3% of span)
<b>Size:</b>	63mm (2½")
<b>Case:</b>	
3005:	304 stainless steel, dry or liquid filled
3005P:	Black ABS, dry or liquid filled
<b>Fill fluid:</b>	Glycerin
<b>Ring:</b>	None
<b>Window:</b>	Polycarbonate with O-ring seal
<b>Dial:</b>	Black figures on white background, aluminum
<b>Pointer:</b>	Black, aluminum
<b>Bourdon tube:</b>	"C" shaped bronze (Vac.-600 psi and compound) Helical bronze (1000-6000 psi) Helical stainless steel (10,000-15,000 psi)
<b>Movement:</b>	Patented PowerFlex with polyester segment

<b>Socket:</b>	Brass, O-ring case seal
<b>Restrictor:</b>	0.013" orifice brass throttle plug in all ranges except vacuum and 15 psi
<b>Connection:</b>	
3005:	¼ NPT lower and back
3005P:	¼ NPT lower only
<b>Ranges:</b>	Vac.-15,000 psi and compound, equivalent metric scales available.
<b>Operating temperature:</b>	Dry gauge: -40°F to 150°F Glycerin filled: 20°F to 150°F

**GAUGE OPTIONS**

<b>Case:</b>	Factory variation code in ( ) Sealed case, fillable (XLJ)
<b>Mounting hardware:</b>	U-clamp (UC), Front Flange (FF), Retrofit Flange (RF), back connection only
<b>Socket:</b>	Throttle plugs, 0.007", 0.013", 0.020", 0.063" orifices
<b>Connections:</b>	JIS, DIN, SAE and others available on application
<b>Others:</b>	Customized dials Nonstandard ranges FlutterGuard (SF) Special calibration on application Clean for oxygen service – dry gauges only

**TO ORDER THIS TYPE 3005/3005P GAUGE:**

<b>Select:</b>	<b>63</b>	<b>W</b>	<b>3005</b>	<b>H</b>	<b>L</b>	<b>02L</b>	<b>1000#</b>
1. Dial Size: 2½"	_____	_____	_____	_____	_____	_____	_____
2. Patented PowerFlex™ Movement	_____	_____	_____	_____	_____	_____	_____
3. Case Type Number: 3005 is SS, 3005P is ABS	_____	_____	_____	_____	_____	_____	_____
4. Socket Material: Brass	_____	_____	_____	_____	_____	_____	_____
5. Liquid Filled Case:	_____	_____	_____	_____	_____	_____	_____
6. Connection Size/Location: ¼ NPT lower	_____	_____	_____	_____	_____	_____	_____
7. Range: 1000 psi	_____	_____	_____	_____	_____	_____	_____



**4½" Gauges**

**Type 1000, ASME B 40.1 Grade B (±3-2-3% of span)**

**Type 2071A, ASME B 40.1 Grade A (±2-1-2% of span)**

Control & Power, Inc. - 1.877.835.5274 - www.controlandpower.com

- Type 2071A contractor gauge offers aluminum-back flange case (black), with attractive chrome-plated steel ring
- Type 1000 gauge offers black steel case with black ring and acrylic window
- Adjustable pointer is standard on contractor gauges
- Patented PowerFlex™ movement with polyester segment
- True Zero™ indication, a unique safety feature

Ashcroft® Type 1000 gauges have a black steel case and ring with an acrylic window. These gauges are appropriate for general industrial applications and can be customized to complement your equipment.

Ashcroft contractor gauges (Type 2071A) are lightweight, highly sensitive and accurate. These gauges are designed to meet the needs of HVAC and plumbing contractors, and are tested against strict industry specifications. The aluminum case provides corrosion resistance.

The patented PowerFlex™ movement, in both Types 1000 and 2071A, provides the shock resistance needed for rough treatment.

True Zero™ indication reduces the potential risk of installing a damaged



Type 2071A Contractor gauge shown

gauge on your equipment.

FlutterGuard™ is available to eliminate pointer flutter and extend gauge life.

**GAUGE SPECIFICATIONS**

**Size:**

**Accuracy:**

**Case:**

**Ring:**

**Window:**

**Dial:**

**Pointer:**

**Bourdon tube:**

**Movement:**

**Socket:**

**Connection:**

**Ranges:**

**Operating temperature:**

**Options:**

**TYPE 1000**

4½"

ASME B 40.1, Grade B (±3-2-3% of span)

Black-painted steel

Black-painted steel, friction fit

Acrylic

Black figures on white background

Black, aluminum

Bronze, soldered

Patented PowerFlex with polyester segment

Brass

¼ NPT lower

Vacuum through 600 psi and compound

-40°F to 150°F

Case color other than black

Glass window (XRE)

Chrome ring (13)

FlutterGuard (SF)

Adjustable pointer (AP)

Nickel-plated socket (NP)

Customized dials

Throttle plugs: 0.007", 0.013", 0.020",

0.063" orifices

Special calibration on application

**TYPE 2071A**

4½"

ASME B 40.1, Grade A (±2-1-2% of span)

Aluminum with back flange, painted black.

Chrome-plated steel, friction fit

Glass

Black figures on white background

Adjustable, black, aluminum

Bronze, soldered (siphon required for steam service)

Patented PowerFlex with polyester segment

Brass

¼ NPT lower

Vacuum through 600 psi and compound

-40°F to 150°F

Case color other than black

Plastic window (PD)

Nickel-plated socket (NP)

FlutterGuard (SF)

Black steel ring

Customized dials

Throttle plugs: 0.007", 0.013", 0.020",

0.063" orifices

Special calibration on application

**TO ORDER THIS TYPE 1000/2071A GAUGE:**

Select: \_\_\_\_\_ 45      W      2071A      02L      300#

1. Dial Size: 4½" \_\_\_\_\_

2. Patented PowerFlex™ Movement \_\_\_\_\_

3. Case Type Number: 2071A \_\_\_\_\_

4. Connection Size/Location: ¼ NPT lower \_\_\_\_\_

5. Range: 300 psi \_\_\_\_\_

Consult factory for guidance in product selection  
 Phone (203) 385-0217, Fax (203) 385-0602 or  
 visit our web site at [www.ashcroft.com](http://www.ashcroft.com)

- Standard dials offer four refrigerant scales (R12, R22, R502, 134A)
- FlutterGuard™ eliminates pointer flutter
- Patented PowerFlex™ movement with polyester segment

Ashcroft® Types 1001T, XOR 1007P, XOR and 1005, XOR are designed to meet the unique requirements of the HVAC, automotive and refrigeration industries.

Ashcroft Type 1001T, XOR gauges are designed for refrigerant recovery and recycling units. All gauges for this service are tested for leaks as

small as  $2.8 \times 10^{-4}$  cc per second to ensure superior integrity. Optional connections eliminate potential leaks at threaded joints and also eliminate customer cost for extra fittings.

Ashcroft Type 1007P, XOR gauges are designed for installation on refrigeration manifolds used in testing automotive, industrial and residential air-conditioning units. The ABS case offers rugged durability and corrosion resistance.

Ashcroft Type 1005, XOR gauges are 80mm in diameter for better dial visibility. These gauges have color-coded steel cases and internally threaded polycarbonate windows.



1007P, XOR gauge shown

FlutterGuard™, a standard feature in these gauges, eliminates pointer flutter and extends gauge life.

GAUGE SPECIFICATIONS	TYPE 1001T, XOR	TYPE 1007P, XOR	TYPE 1005, XOR
<b>Size:</b>	2½", 3½"	2½"	80mm
<b>Accuracy:</b>	1% at zero, 2% three fourths of scale, 5% last fourth of scale	1% at zero, 2% three fourths of scale, 5% last fourth of scale	1% at zero, 2% three fourths of scale, 5% last fourth of scale
<b>Case:</b>	Black steel with studs and U-clamp for panel mounting	Red ABS - high pressure Blue ABS - low pressure	Steel, painted blue (low pressure) Steel, painted red (high pressure)
<b>Ring:</b>	None	None	None
<b>Window:</b>	¼ turn polycarbonate, threaded	Polycarbonate, threaded	Internally threaded polycarbonate
<b>Dial:</b>	Refrigerant scales R12, R22, R502, R134A, 410A	Refrigerant scales R12, R22, R502, R134A, 410A	Refrigerant scales R12, R22, R502, R134A, 410A
<b>Pointer:</b>	Black, aluminum	Black, aluminum	Black, aluminum
<b>Bourdon tube:</b>	Bronze	Bronze	Bronze
<b>Movement:</b>	Patented PowerFlex with polyester segment and FlutterGuard; slotted span screw for minor span adjustments	Patented PowerFlex with polyester segment and FlutterGuard; slotted span screw for minor span adjustments	Patented PowerFlex with polyester segment and FlutterGuard; slotted span screw for minor span adjustments
<b>Socket:</b>	Brass	Brass	Brass
<b>Restrictor:</b>	0.013" orifice throttle plug	0.020" orifice throttle plug	0.020" orifice throttle plug
<b>Connection:</b>	½ NPT back, ¼ NPT back	½ NPT lower	½ NPT lower
<b>Ranges:</b>	30 in.Hg vac./0/120 psi retard to 250 psi; 0-500 psi; 30 in.Hg vac./0/350 psi retard to 500 psi; 0-800 psi	30 in.Hg vac./0/120 psi retard to 250 psi; 0-500 psi; 30 in.Hg vac./0/350 psi retard to 500 psi; 0-800 psi	30 in.Hg vac./0/120 psi retard to 250 psi; 0-500 psi; 30 in.Hg vac./0/350 psi retard to 500 psi; 0-800 psi
<b>Operating temp.:</b>	-40°F to 150°F	-40°F to 150°F	-40°F to 150°F
<b>Options:</b>	Nonstandard ranges Alternate refrigerant ranges SAE Flare, solder bib and ferrule connections, Customized dials	Nonstandard ranges Alternate refrigerant ranges Case color Customized dials	Nonstandard ranges Alternate refrigerant ranges Retard to 350 psi, Customized dials Bulk packaging, Black case

**TO ORDER THIS TYPE 1001T, XOR / 1007P, XOR/ 1005, XOR GAUGE:**

Select: \_\_\_\_\_ 25      W      1007      P      H      01L      X(OR)      140#/V

- Dial Size: 2½" \_\_\_\_\_
- Patented PowerFlex™ Movement \_\_\_\_\_
- Case Type Number: 1007 \_\_\_\_\_
- Case material: ABS \_\_\_\_\_
- Socket Material: Brass \_\_\_\_\_
- Connection Size/Location: ½ NPT lower \_\_\_\_\_
- Refrigeration Application \_\_\_\_\_
- Range: 30 in.Hg vac./0/120 psi retard to 250 psi \_\_\_\_\_

Consult factory for guidance in product selection  
Phone (203) 385-0217, Fax (203) 385-0602 or  
visit our web site at [www.ashcroft.com](http://www.ashcroft.com)

- Compact size – 23mm (.906”) diameter
- ABS case with acrylic window ultrasonically welded to case
- Wrench flats on socket for easy installation
- Available in 60-300 psi
- Direct Drive technology for excellent shock resistance

The Ashcroft® MiniGauge® pressure gauge is de-signed for those applications where space is a limiting factor. Taking into consideration the small size of the MiniGauge

(23mm), the dial face was designed for maximum readability. This product is offered in 1/8 NPT back connection with 15mm (9/16”) wrench flats for easy installation.

The versatile Ashcroft MiniGauge surpasses the demands of durability in two important ways: first, by using direct-drive reading, the spiral tube transmits motion directly to the pointer – no gears or movement parts to wear out; and second, the case material is an ABS blend that is both enduring and attractive.

The Ashcroft MiniGauge is perfect for a multitude of applications where a 1 1/2” conventional size gauge is too large.



**GAUGE SPECIFICATIONS**

- Type no.:** 23DDG  
**Accuracy:** ±5% of span  
**Size:** 23mm (.906”)  
**Case:** Black ABS blend  
**Ring:** None  
**Window:** Polycarbonate, ultrasonically welded to case  
**Dial:** Black figures on white background, aluminum  
**Pointer:** Brass, painted black  
**Bourdon tube:** Beryllium copper, spiral; soft soldered to socket  
**Movement:** None (direct-drive reading)  
**Socket:** Brass with 15mm (9/16”) wrench flats

- Repeatability:** Better than 1%  
**Operating temperature:** –40°F to 150°F  
**Packaging:** Bulk pack; individually sealed 2 mil polybags

**Note:** Consult factory for high cycle-life applications

**Connection:** 1/8 NPT back

**Ranges:**

Range (psi)	Dial Arc	
	180°	235°
0/60	*	
0/100	*	
0/160		*
0/200		*
0/300		*

**GAUGE OPTIONS**

- Socket:** Throttle plugs; 10/32” threads; PT 1/8 (JIS) and R 1/8 (BSPT) threads  
**Dial:** Customized  
**Dampening:** Silicone-dampened coil for vibration applications

**TO ORDER THIS TYPE 23DDG GAUGE:**

Select: \_\_\_\_\_ **23**    **DDG**    **01B**    **60#**

1. Gauge Size: 23mm (.906” or 29/32”) \_\_\_\_\_

2. Case Type: Direct Drive Gauge \_\_\_\_\_

3. Connection Size/Location: 1/8 NPT back \_\_\_\_\_

4. Range: 0/60 psi \_\_\_\_\_

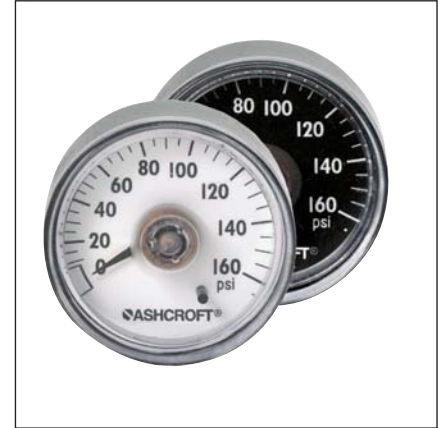
- ASME Grade B (±3-2-3) accuracy
- Excellent shock and corrosion resistance
- No gears to jam
- ABS case for lightweight gauge
- Smoother pointer rotation
- Cost effective

Chalk up another Ashcroft® first. For the first time ever, ASME B40.1, Grade B accuracy (±3-2-3) is available in a commercial grade direct drive gauge . . . only in Ashcroft direct drive gauges!

Ashcroft direct drive gauge technology provides excellent shock

resistance. Testing has shown these gauges to be four times more shock resistant than conventional fixed movement gauges! Direct drive gauges have no gears to jam or wear out. The net result is a gauge that arrives at your facility to specified calibration parameters and stays that way throughout the service life of the gauge.

Ashcroft direct drive gauges are lightweight, attractive and durable, plus the sealed construction makes this product appropriate for many harsh environmental conditions. This winning combination of features is only available in Ashcroft direct drive gauges.



**GAUGE SPECIFICATIONS**

- Type no.:** DDG
- Accuracy:** ASME B 40.1 Grade B (±3-2-3% of span)
- Size:** 40mm (1½") or 50mm (2")
- Case:** ABS/polycarbonate blend, black
- Ring:** None
- Window:** Polycarbonate, ultrasonically welded to case
- Dial:** Plastic, black figures on white background
- Pointer:** Brass, painted black
- Bourdon tube:** Beryllium copper coil, silicone dampened
- Movement:** None (direct reading)
- Socket:** Integral plastic
- Restrictor:** None
- Connection:** ½ NPT back connection (40mm & 50mm)  
¼ NPT back connection (50mm only)

- Ranges:** 0/60 (180° arc), 0/100, 0/160, 0/200, 0/300 and 0/400 psi (235° arc)
- Operating temperature:** -40°F to 150°F

**GAUGE OPTIONS**

- Socket:** Brass socket ( ¼ NPT or ½ NPT)
- Others:**
  - Custom dials
  - Throttle plugs
  - Special connections, on application
  - Red or white pointers
  - Bulk pack in returnable PVC trays

**TO ORDER THIS TYPE 40 DDG/50 DDG GAUGE:**

Select: \_\_\_\_\_

1. Gauge Size: 40mm \_\_\_\_\_ **40** \_\_\_\_\_

2. Case Type: Direct Drive Gauge \_\_\_\_\_ **DDG** \_\_\_\_\_

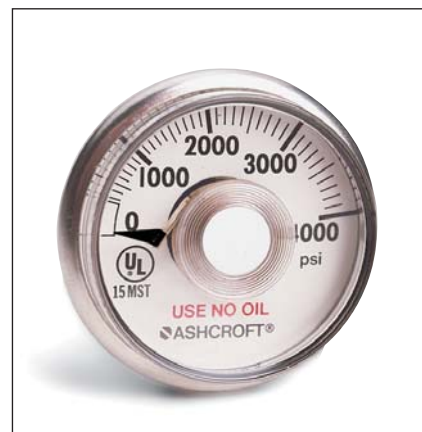
3. Connection Size/Location: ½ NPT back \_\_\_\_\_ **01B** \_\_\_\_\_

4. Socket Material: Plastic (P), Brass (H) \_\_\_\_\_ **P** \_\_\_\_\_

5. Range: 0/100 psi \_\_\_\_\_ **100#** \_\_\_\_\_

- Sealed stainless steel case provides a weatherproof, dustproof corrosion-resistant gauge
- Spiral tube transmits motion directly to the pointer—no gears or bearings to wear out
- High impact-resistant polycarbonate window
- UL 404 listed for compressed gas (including oxygen) for 1500 psi, 2000 psi, 3000 psi and 4000 psi

Ashcroft® DDG, direct drive gauges are constructed for strenuous use under severe environmental conditions and can withstand excessive levels of shock and vibration—an excellent choice for outdoor applications. Optional features to enhance the performance of these gauges are silicone-damped tubes for excessive vibration applications and silicone-filled tubes for corrosion protection.


**GAUGE SPECIFICATIONS**

<b>Type no.:</b>	12DDG, 15DDG
<b>Accuracy:</b>	Standard $\pm 2\%$ at setpoint (setpoint is normally 50% of range; other setpoints upon application). UL listed $-3.5\%$ of span in middle three-fifths of scale.
<b>Size:</b>	1¼" - 12DDG 1½" - 15DDG
<b>Case:</b>	Stainless steel, sealed
<b>Ring:</b>	None
<b>Window:</b>	High impact-resistant polycarbonate
<b>Dial:</b>	Black figures on white background
<b>Pointer:</b>	Black, integral with bourdon tube
<b>Bourdon tube:</b>	Beryllium copper, spiral; soft soldered to socket
<b>Movement:</b>	None (direct reading)
<b>Socket:</b>	Brass

Available Ranges (psi)	Dial Arc			
	165°	180°	200°	235°
0/60		•		
0/100*				•
0/160				•
0/200				•
0/300				•
0/700			•	
0/1200		•		
0/1500	•			
0/2000	•			
0/3000	•			
0/4000	•			

\*12 MST available in 180° arc.

**Restrictor:** Safety plug-in 1500-4000 psi ranges

**Connection:** ½ NPT back, standard

**Repeatability:** Better than 1%

**Operating**

**Temperature:**  $-40^{\circ}\text{F} - 150^{\circ}\text{F}$

**Note:** Consult factory for high cycle-life applications

**GAUGE OPTIONS**

**Socket:** ¼ NPT; throttle plugs, 0.007", 0.013", 0.020", 0.063" orifice

**Others:** Customized dials  
Metric and dual ranges available  
Silicone-damped spiral tube for vibration service  
Silicone-filled spiral tube for corrosion protection  
UL listed for compressed gas (including oxygen); 1500 psi, 2000 psi, 3000 psi, 4000 psi

**TO ORDER THIS TYPE DDG GAUGE:**

<b>Select:</b>	15	DDG	01B	100#
1. Dial Size: 1½"	_____			
2. Case Type: DDG	_____			
3. Connection Size/Location: ½ NPT back = 01B	_____			
4. Range: 100 psi	_____			

- Sealed stainless steel case provides a weatherproof, dustproof corrosion-resistant gauge
- High impact-resistant polycarbonate window
- Meets applicable UL specifications\*
- Mass spectrometer leak tested

Ashcroft® fire extinguisher gauges are mass spectrometer leak tested, thereby ensuring the critical leak integrity needed to prevent loss of extinguishing agent. These high-quality gauges are constructed with a corrosion-resistant stainless steel case and high impact-resistant polycarbonate window. Dial faces can be customized to meet customer requirements. The spiral tube technology used in these gauges offers the necessary accuracy without the complication of gearing, linkages and bearings that are present in a conventional movement gauge.



**GAUGE SPECIFICATIONS**

<b>Type no.:</b>	12MFX, 15MFX	<b>Restrictor:</b>	None
<b>Accuracy:</b>	Conforms to applicable UL specs*	<b>Connection:</b>	1/8 NPT back, standard
<b>Size:</b>	1 1/4" – 12MFX 1 1/2" – 15MFX	<b>Ranges:</b>	Maximum pressure scale from 200 psi to 1200 psi
<b>Case:</b>	Stainless steel, sealed	<small>*Applicable UL Specs: UL 299, UL 626, UL 1058, UL 1093</small>	
<b>Ring:</b>	None		
<b>Window:</b>	High impact-resistant polycarbonate		
<b>Dial:</b>	Conforms to applicable UL specs*		
<b>Pointer:</b>	Integral with Bourdon tube, brass painted yellow		
<b>Bourdon tube:</b>	Beryllium copper, spiral		
<b>Movement:</b>	None (direct reading)		
<b>Socket:</b>	Brass		

**GAUGE OPTIONS**

<b>Socket:</b>	1/4 NPT; throttle plugs, 0.007", 0.013", 0.020", 0.063" orifice
<b>Others:</b>	Customized dials Silicone-filled spiral tube for corrosion protection Special socket configurations

**TO ORDER THIS TYPE MFX GAUGE:**

<b>Select:</b>	12	MFX	01B	400	C195	P
1. Dial Size: 1 1/4"	_____					
2. Case Type: MFX	_____					
3. Connection Size/Location: 1/8 NPT Back	_____					
4. Range: 400 psi	_____					
5. Charge Pressure	_____					
6. Extinguishing Agent: Dry Chemical (P), Halon 1301 (F), Halon 1211 (H), Water (W), Alternative (A)	_____					

Consult factory for guidance in product selection  
Phone (203) 385-0217, Fax (203) 385-0602 or  
visit our web site at www.ashcroft.com